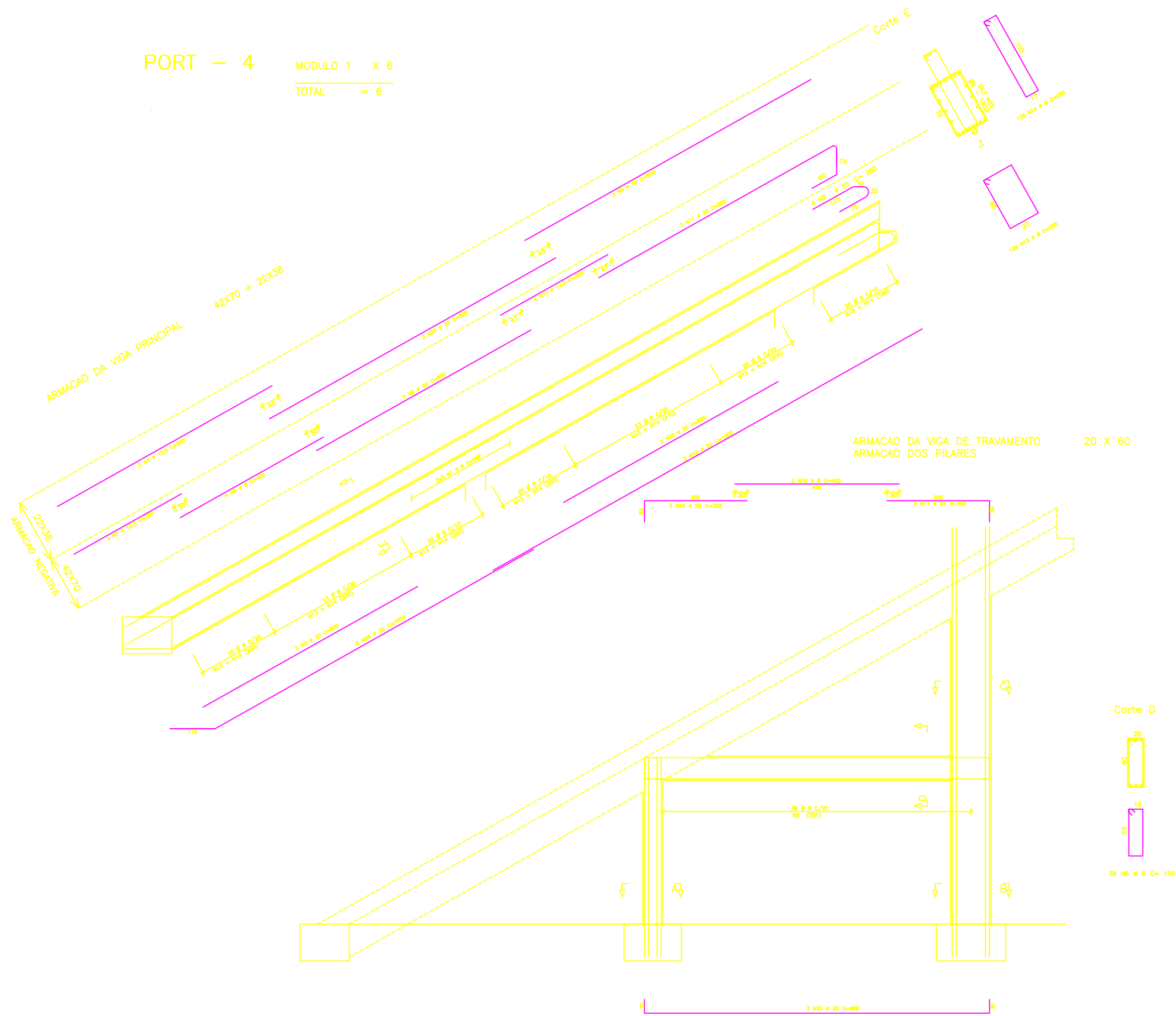
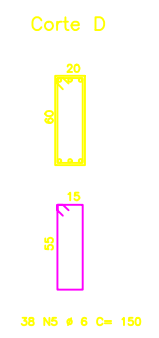
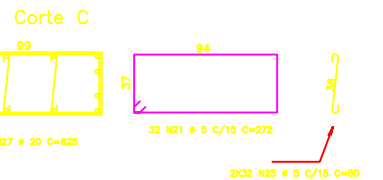
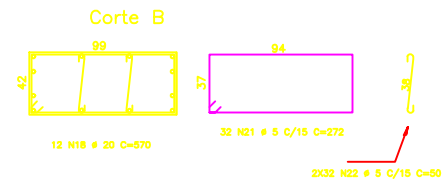
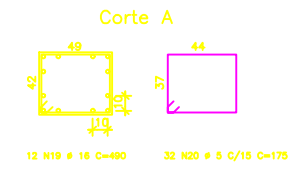


PORT - 4
 MODULO 1 X 6
 TOTAL = 6



AÇO	POS	BIT (mm)	QUANT	COMPRIMENTO UNIT (cm)	TOTAL (cm)
(X6)					
60B	1	8	36	--VAR--	72000
50A	2	20	24	260	6240
50A	3	20	12	600	7200
50A	4	12.5	12	600	7200
60B	5	8	228	150	34200
50A	6	20	18	800	14400
50A	7	12.5	24	300	7200
60B	8	8	24	400	9600
50A	9	20	42	600	25200
50A	10	12.5	24	300	7200
50A	11	20	42	800	33600
50A	12	20	18	1200	21600
60B	13	8	756	205	154980
60B	14	8	756	255	192780
50A	15	20	18	302	5436
60B	16	8	12	400	4800
50A	17	20	18	302	5436
50A	18	20	72	570	41040
50A	19	16	72	490	35280
60B	20	5	192	175	33600
60B	21	5	354	272	104448
60B	22	5	364	50	18200
50A	23	20	18	908	16344
50A	24	20	18	800	14400
50A	25	20	12	800	7200
50A	26	20	36	1000	36000
50A	27	20	72	625	45000

AÇO	BIT (mm)	COMPR (m)	PESO (kg)
60B	5	1572	252
60B	8	342	76
60B	8	4342	1737
50A	12.5	216	218
50A	16	353	564
50A	20	2751	6878
Peso Total		60B =	2064 kg
Peso Total		50A =	7659 kg



ENECOL - Engenharia Estrutural e Consultoria Ltda
 Av. Antonio Baello, 3025 sala 307 Fone: 201 9187 e 201 9188 - Fax 211 8118 Natal - RN

JOACI ARAUJO - MARCIO MEDEIROS - ROBINSON AZEVEDO

NUMERO PROJ: 1829 CLIENTE: EOCOL
 OBRA: ESTADIO DE FUTEBOL "FRASQUEIRAO"

PRANCHA: 17/36 ASSUNTO: ARMACAO DO PORT - 4

COMP. CONCRETO: fck= 400 kgf/cm² AÇO: CASA CABOS DATA: OUT/2002 ESCALA(S): 1 : 50 DESENHO: CAROL