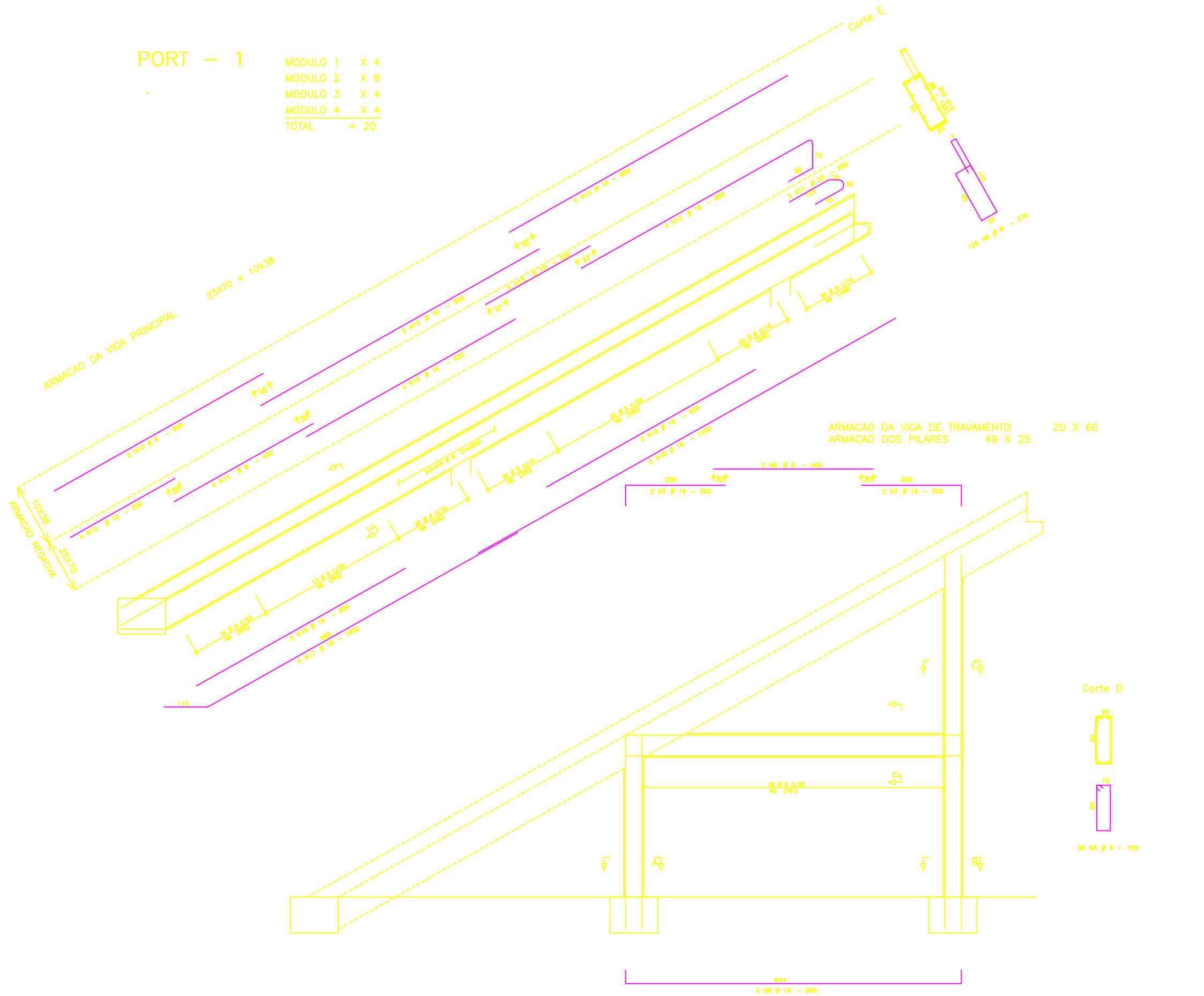


PORT - 1

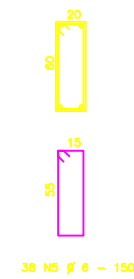
MODULO 1	X 4
MODULO 2	X 8
MODULO 3	X 4
MODULO 4	X 4
TOTAL	= 20



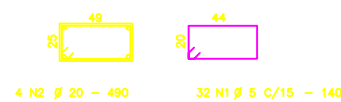
ACO	POS	BIT (mm)	QUANT	COMPRIMENTO	
				UNIT (cm)	TOTAL (cm)
PORT - 1 (X20)					
60B	1	5	1680	140	283200
50A	2	20	80	490	39200
50A	3	20	80	570	45600
50A	4	20	80	450	36000
60B	5	6	760	150	114000
50A	6	16	40	900	36000
50A	7	16	80	300	24000
60B	8	6	40	400	16000
60B	9	8	2520	270	680400
60B	10	8	40	600	24000
50A	11	20	40	280	10400
50A	12	16	80	800	64000
50A	13	10	160	300	48000
60B	14	8	80	400	32000
50A	15	16	80	800	64000
50A	16	16	160	600	96000
50A	17	16	80	1000	80000
50A	18	16	40	1200	48000
60B	19	8	40	5556	222240

RESUMO ACO CA 50-60			
ACO	BIT (mm)	COMPR (m)	PESO (kg)
60B	5	2832	421
60B	6	1140	253
60B	8	9706	3883
50A	10	480	302
50A	16	4120	6592
50A	20	1312	3280
Peso Total		60B =	4557 kg
Peso Total		50A =	10174 kg

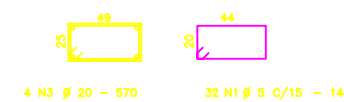
Corte D



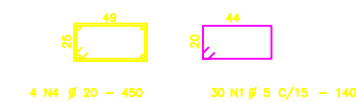
Corte A



Corte B



Corte C



ENECOL - Engenharia Estrutural e Consultoria Ltda					
Av. Antonio Balillo, 3025 sala 307		Fone: 201 9187 e 201 9188 - Fax 211 8118			
Natal - RN					
JOACI ARAUJO - MARCIO MEDEIROS - ROBINSON AZEVEDO					
NUMERO PROJ:	1829	CLIENTE:	ECCOIL		
PRANCHA:	13/36	OBRA:	ESTADIO DE FUTEBOL "FRASQUEIRA0"		
ASSINTE:		ARMACAO DO PORT - 1			
CONF.	CONCRETO	ACO	DATA	ESCALA(S)	DESENHO
	fck= 400 kgf/cm ²	CASOA CA00B	OUT/2002	1 : 50	CAROL