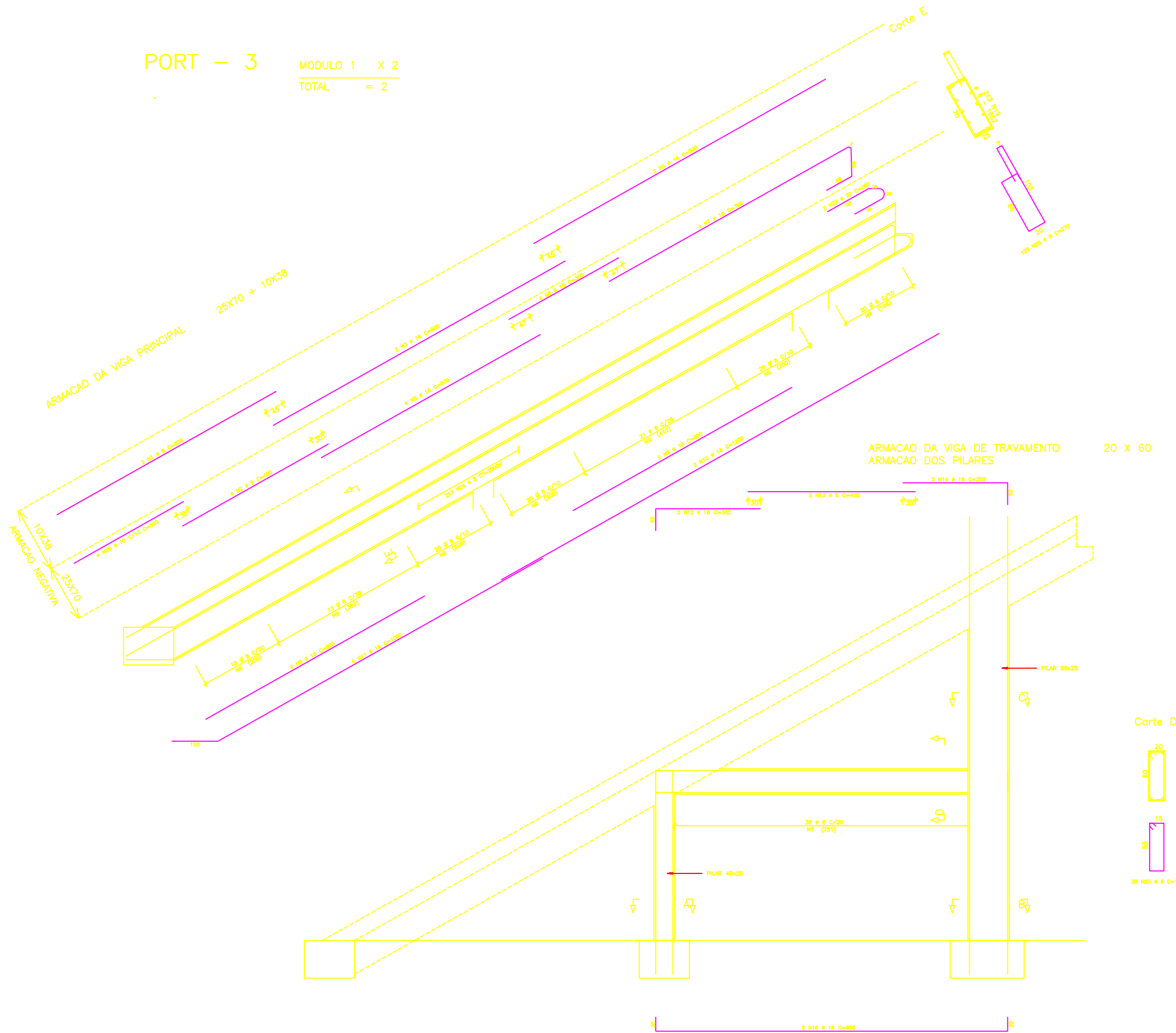
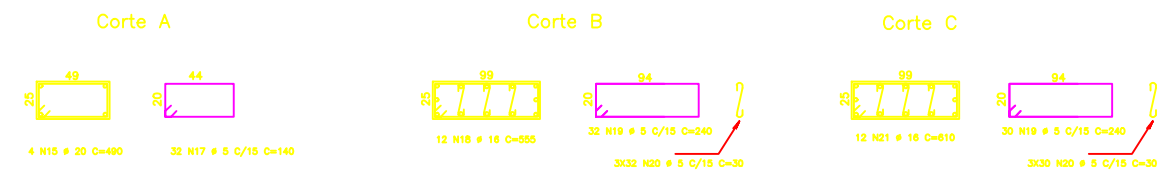


PORT - 3  
 MODULO 1 X 2  
 TOTAL = 2



AÇO	POS	BIT (mm)	QUANT	COMPRIMENTO UNIT (cm)	TOTAL (cm)
(X2)					
50A	1	8	4	600	2400
50A	2	8	4	400	1600
50A	3	16	4	800	3200
50A	4	16	4	800	3200
50A	5	16	8	600	4800
50A	6	10	8	300	2400
50A	7	16	8	799	6392
50A	8	16	4	600	2400
50A	9	16	4	600	2400
50A	10	16	4	1200	4800
50A	11	16	8	1000	8000
50A	12	16	4	302	1208
50A	13	8	4	400	1600
50A	14	16	4	302	1208
50A	15	20	8	490	3920
50A	16	16	4	900	3600
60B	17	5	84	140	3960
50A	18	16	24	555	12960
60B	19	5	124	240	29760
60B	20	5	372	30	11160
50A	21	16	24	610	14400
50A	22	20	4	280	1040
60B	23	6	76	150	11400
50A	24	8	12	VAR	24000
50A	25	8	252	270	68040
50A	26	10	8	300	2400

AÇO	BIT (mm)	COMPR (m)	PESO (kg)
50A	8	992	397
50A	10	48	30
50A	12,5	274	274
50A	16	412	659
50A	20	50	124
60B	5	499	80
60B	6	114	25
Peso Total	50A =		1484 kg
Peso Total	60B =		105 kg



<b>ENECOL</b> - Engenharia Estrutural e Consultoria Ltda Av. Antonio Balillo, 3025 sala 307 Fone: 201 9187 e 201 9188 - Fax 211 8118 Natal - RN					
JOACI ARAUJO - MARCIO MEDEIROS - ROBINSON AZEVEDO					
NUMERO PROJ: 1829	CLIENTE: EOCOL	OBRA: ESTADIO DE FUTEBOL "FRASQUEIRA"			
PRANCHAS: 15/36	ASSUNTO: ARMACAO DO PORT - 3				
CONF.	CONCRETO: fck= 400 kgf/cm <sup>2</sup>	AÇO: CASA CA08B	DATA: OUT/2002	ESCALA(S): 1 : 50	DESENHO: CAROL