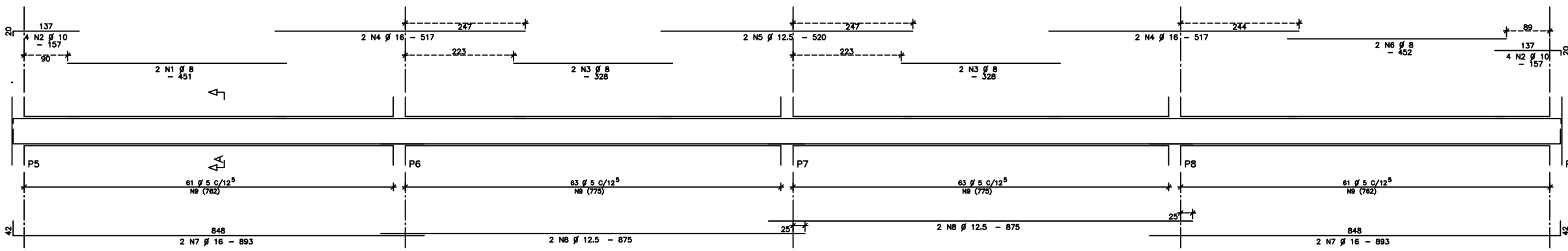
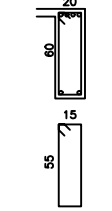


VTLS-4 VAOS 20X60

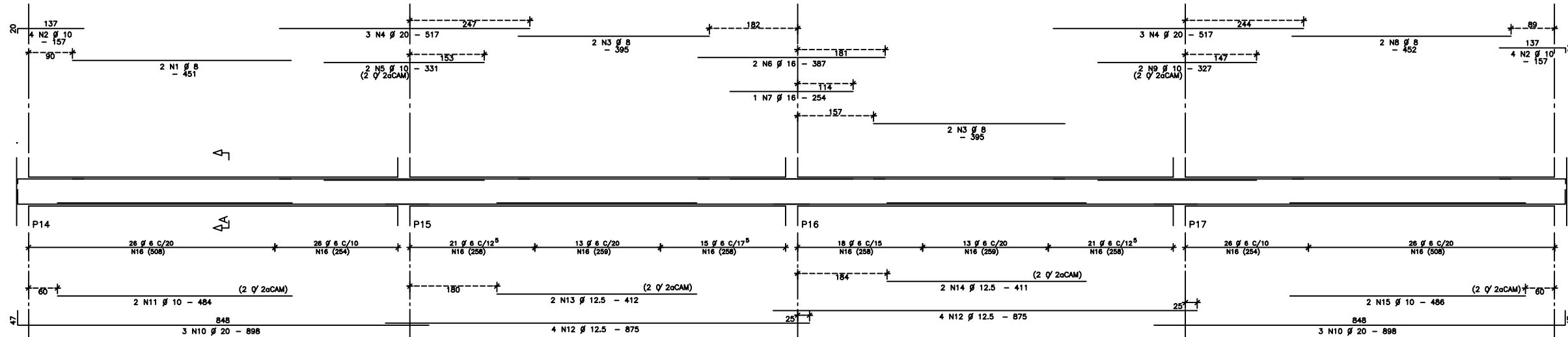


Corte A

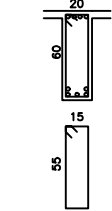


248 N9 Ø 5 - 148

VTLI-4 VAOS 20X60

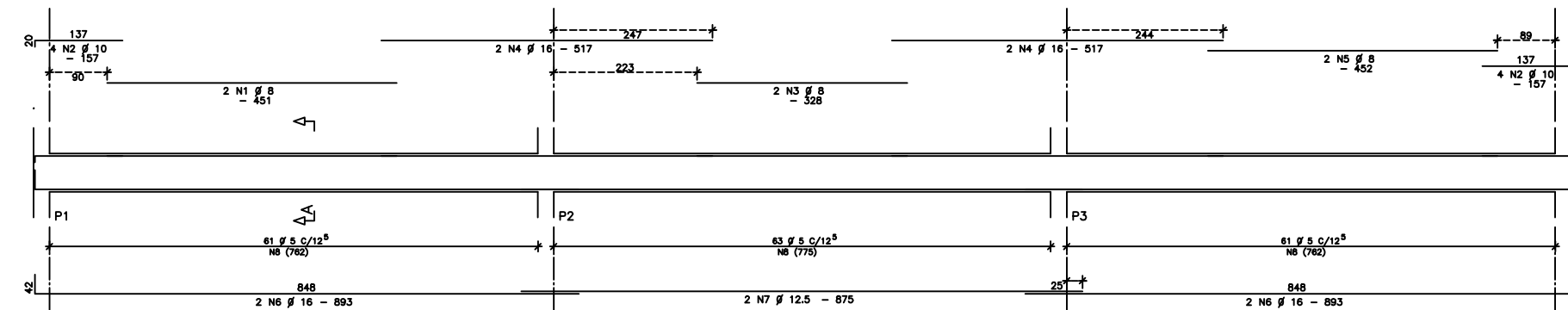


Corte A

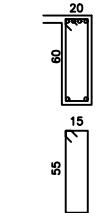


205 N16 Ø 6 - 150

VTLS-3 VAOS 20X60

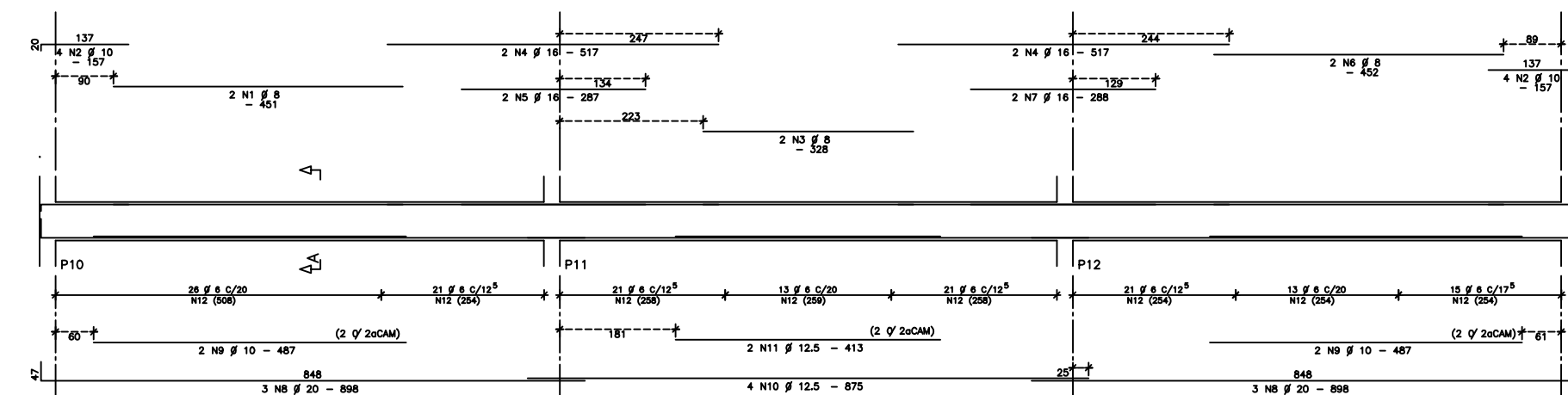


Corte A

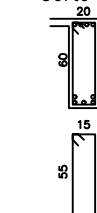


185 N8 Ø 5 - 148

VTLI-3 VAOS 20X60



Corte A



151 N12 Ø 6 - 150

ACO	POS	IT (mm)	QUANT	COMPRIMENTO (cm)	UNIT (cm)	TOTAL (cm)
<b>VTLS-3 VAOS (X4)</b>						
60B	1	8	8	451		3608
50A	2	10	32	157		5024
60B	3	8	8	328		2624
50A	4	16	16	517		8272
60B	5	8	8	452		3616
50A	6	16	16	893		14288
50A	7	12.5	8	875		7000
60B	8	5	740	148		109520
<b>VTLS-4 VAOS (XB)</b>						
60B	1	8	16	451		7216
50A	2	10	64	157		10048
60B	3	8	32	328		10496
50A	4	16	32	517		16544
50A	5	12.5	16	520		8320
60B	6	8	16	452		7232
50A	7	16	32	893		28576
50A	8	12.5	32	875		28000
60B	9	5	1984	148		293632
<b>VTLI-3 VAOS (XB)</b>						
60B	1	8	16	451		7216
50A	2	10	64	157		10048
60B	3	8	16	328		5248
50A	4	16	32	517		16544
50A	5	16	16	287		4592
60B	6	8	16	452		7232
50A	7	16	16	288		4608
50A	8	20	48	898		43104
50A	9	10	32	487		15584
50A	10	12.5	32	875		28000
50A	11	12.5	16	413		8608
60B	12	6	1208	150		181200
<b>VTLI-4 VAOS (X16)</b>						
60B	1	8	32	451		14432
50A	2	10	128	157		20096
60B	3	8	64	328		25280
50A	4	20	96	517		49632
50A	5	10	32	331		10592
50A	6	16	32	387		12384
50A	7	16	16	254		4064
60B	8	8	32	452		14464
50A	9	10	32	327		10464
50A	10	20	96	898		86208
50A	11	10	32	484		15488
50A	12	12.5	128	875		112000
50A	13	12.5	32	412		13184
50A	14	12.5	32	411		13152
50A	15	10	32	486		15552
60B	16	6	3280	150		492000

RESUMO ACO CA 50-60			
ACO	IT (mm)	COMPR (m)	PESO (kg)
60B	5	4032	845
60B	6	6732	1494
60B	8	1087	435
50A	10	1129	711
50A	12.5	2163	2163
50A	16	1099	1758
50A	20	1789	4474
Peso Total 60B =			2574 kg
Peso Total 50A =			9105 kg

**ENECOL - Engenharia Estrutural e Consultoria Ltda**  
 Av. Antônio Baello, 3025 sala 307 Fone: 201 9187 e 201 9188 - Fax 211 8118  
 Natal - RN

**JOACI ARAUJO - MARCIO MEDEIROS - ROBINSON AZEVEDO**

NUMERO PROJ: 1829 CLIENTE: ECOIL  
 OBRA: ESTADIO DE FUTEBOL "FRASQUEIRAO"  
 PRANCHAS: 20/36 ASSUNTO: ARMAÇAO DAS VIGAS DE TRAVAMENTO LONGITUDINAIS

CONF. CONCRETO: fck= 400 kgf/cm<sup>2</sup> AÇO: CASA CA60B DATA: OUT/2002 ESCALA(S): 1 : 50 DESENHO: CAROL