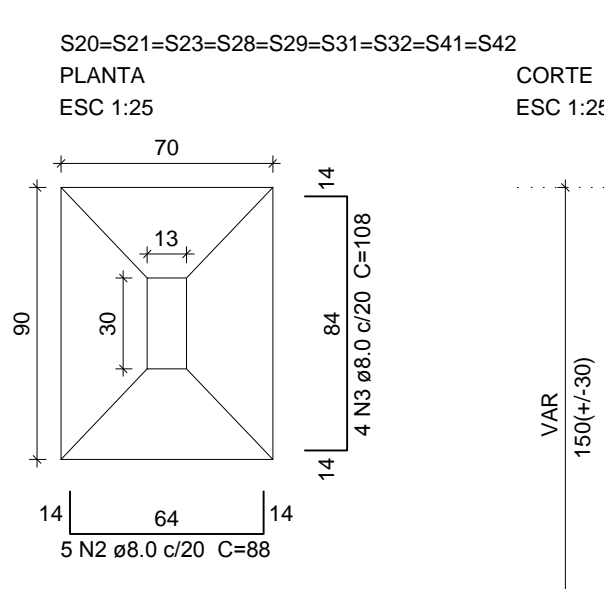
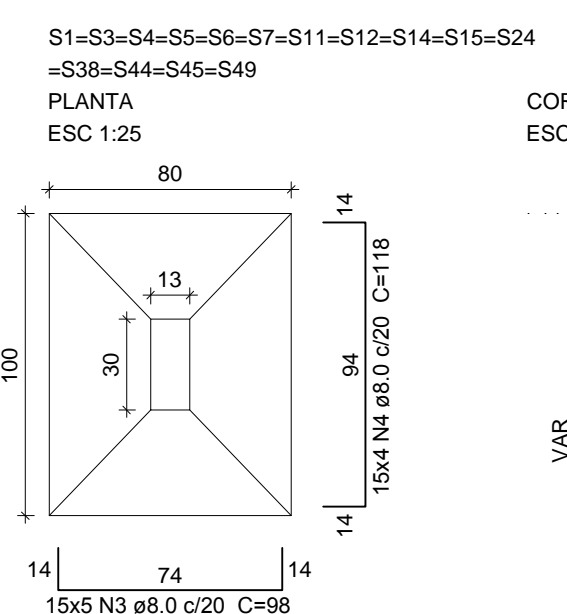
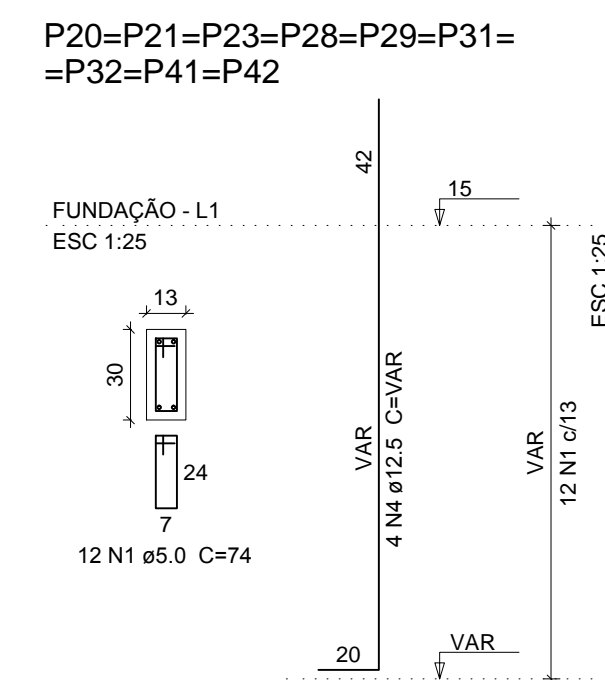
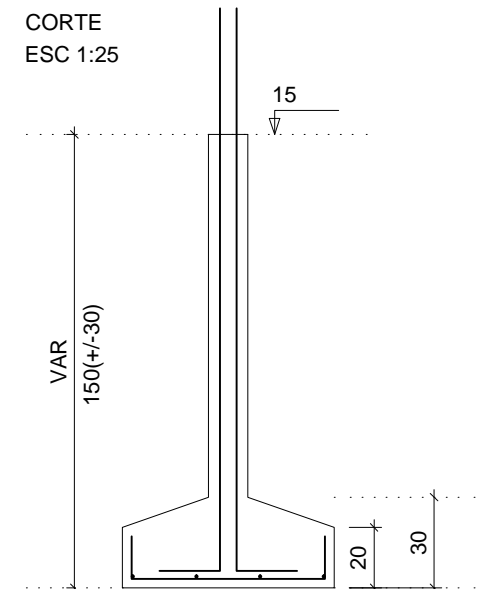


NOTAS GERAIS

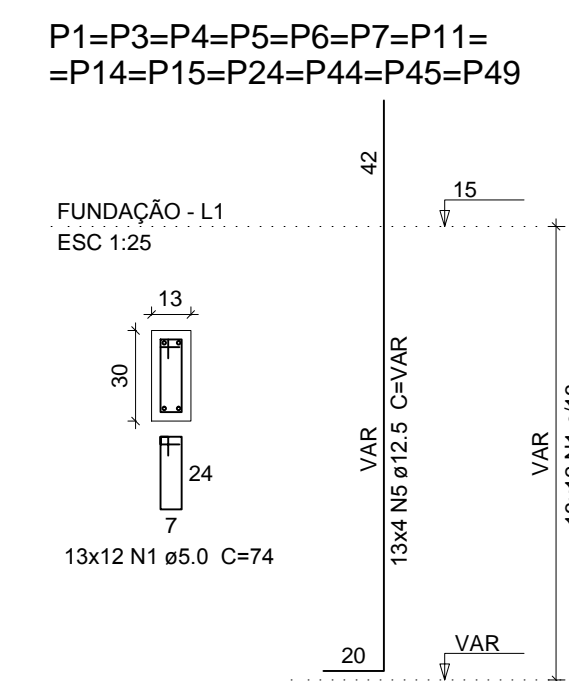
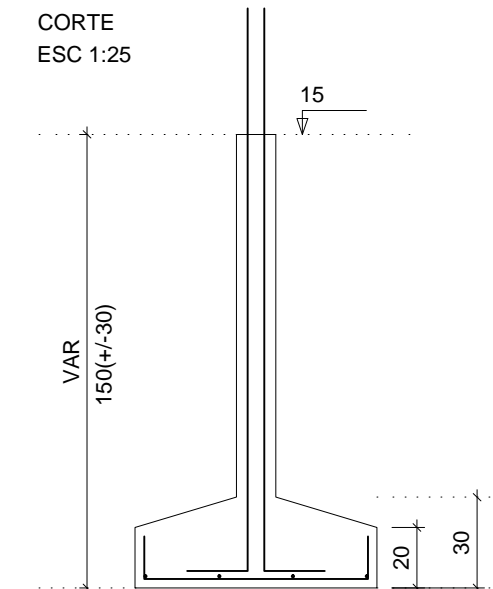
- 1 - DIMENSÕES E ELEVAÇÕES EM CENTÍMETRO
- 2 - TAXA ADMISSÍVEL DO TERRENO 1.0kg/cm² (Estimada)



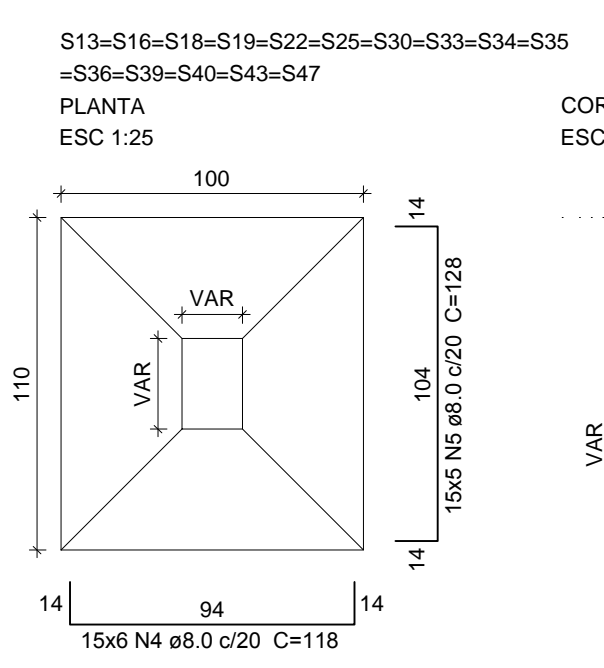
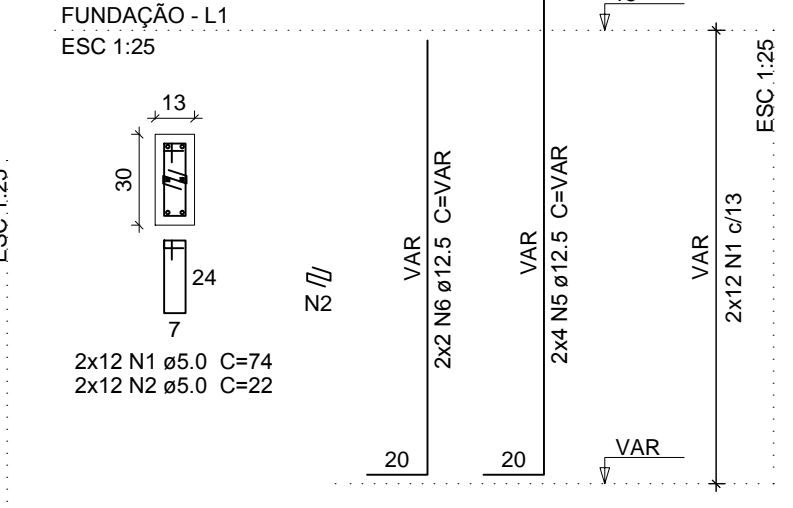
CORTE
ESC 1:25



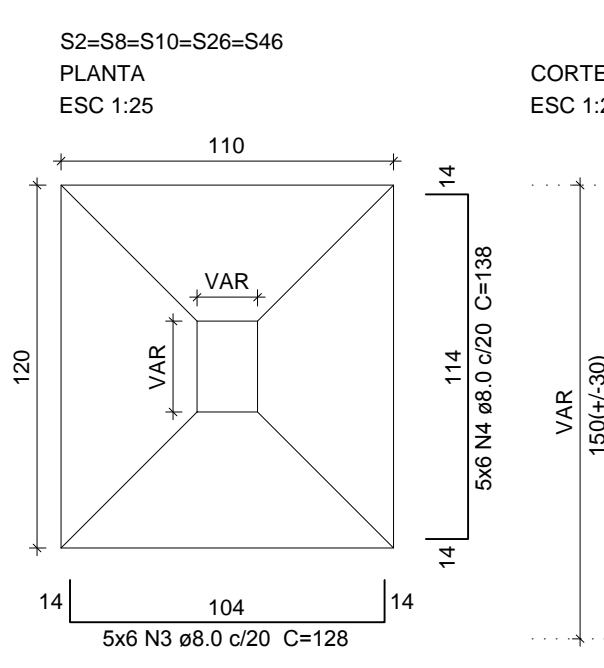
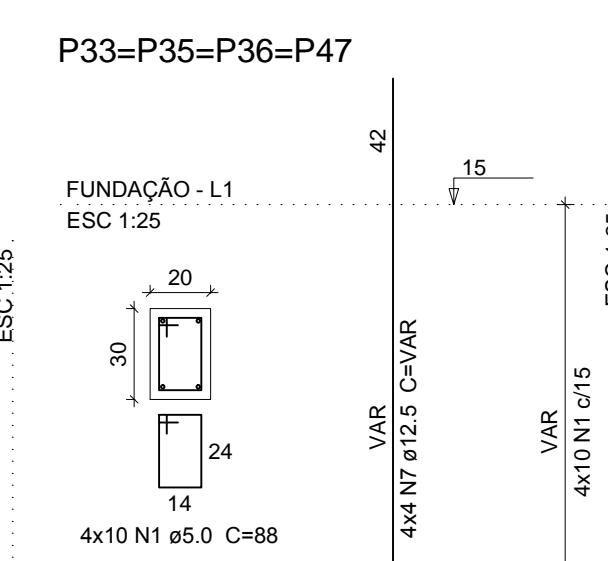
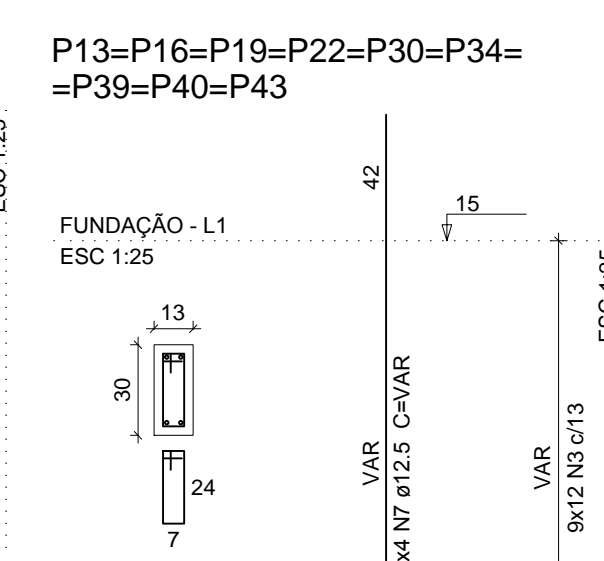
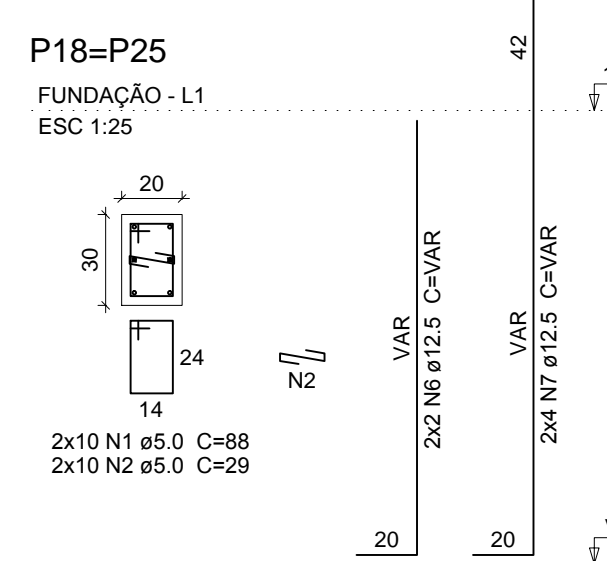
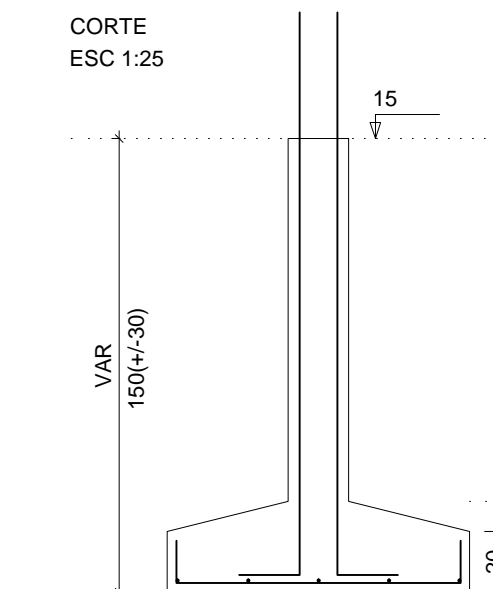
CORTE
ESC 1:25



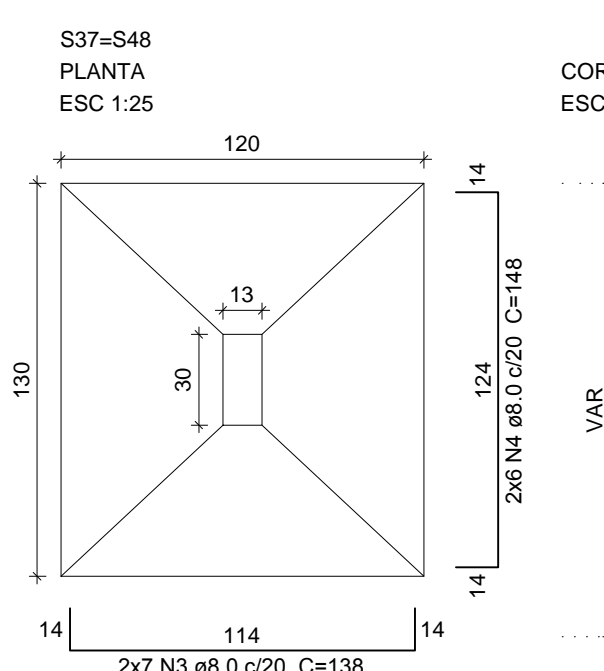
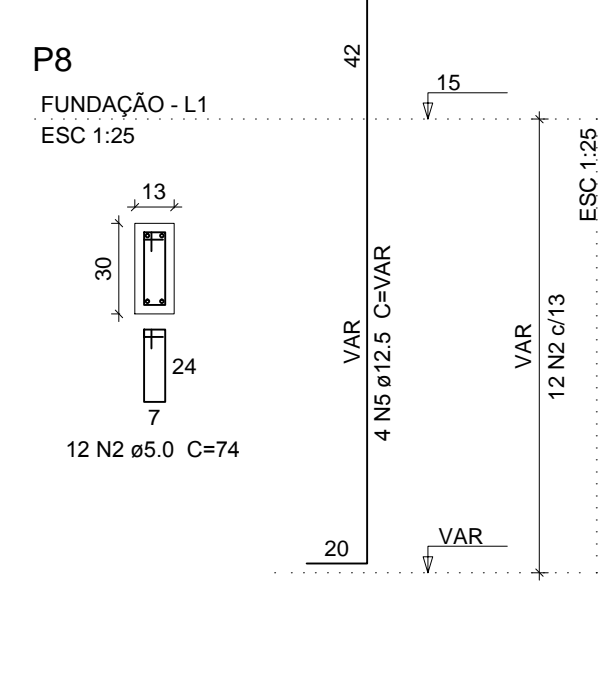
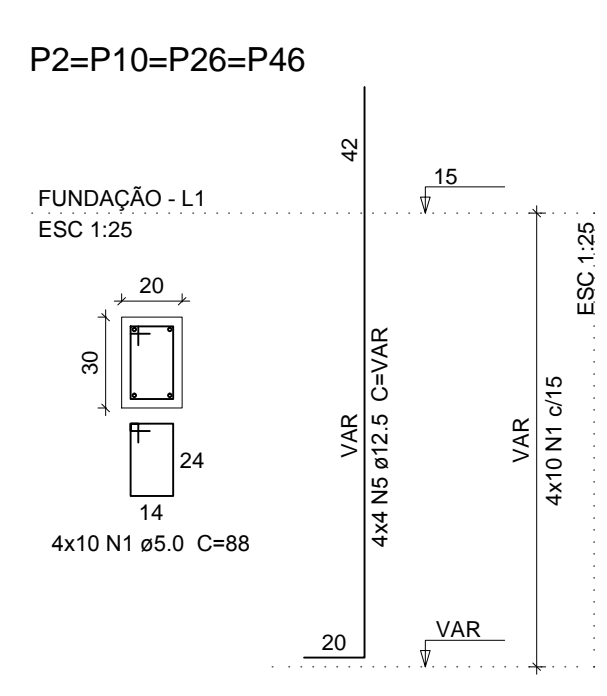
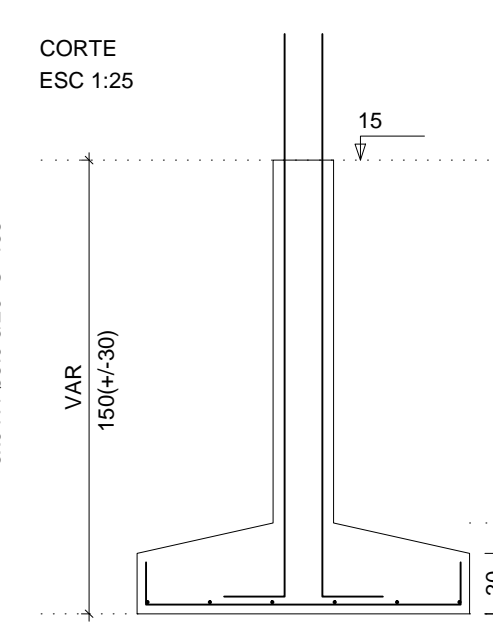
P12=P38



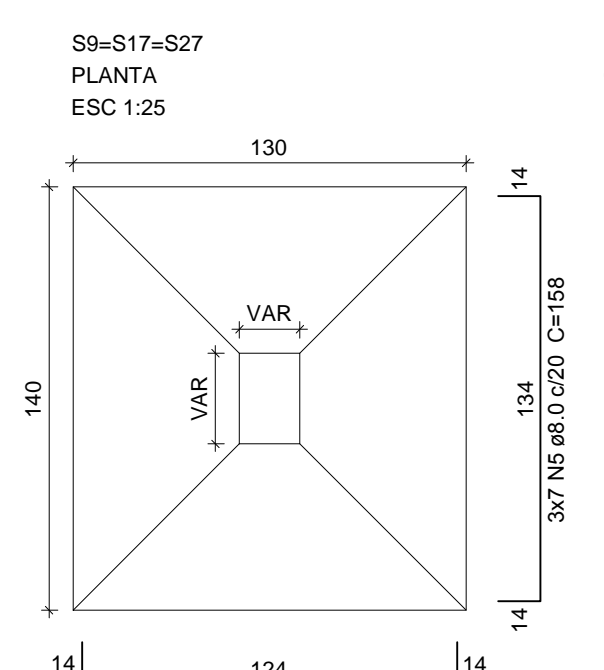
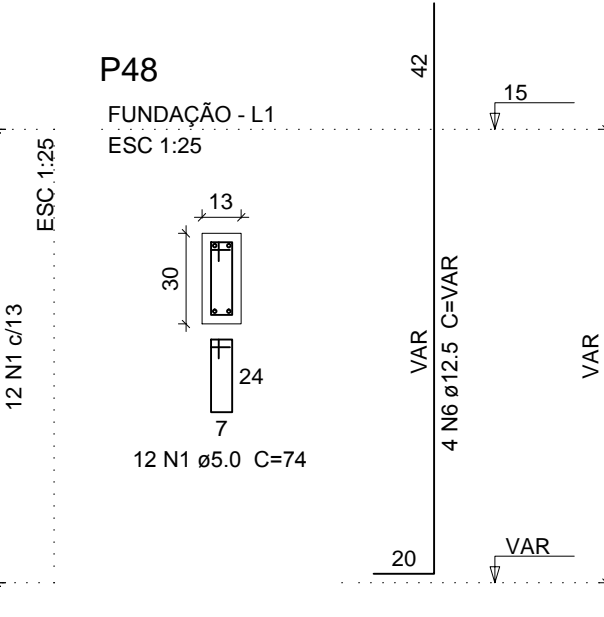
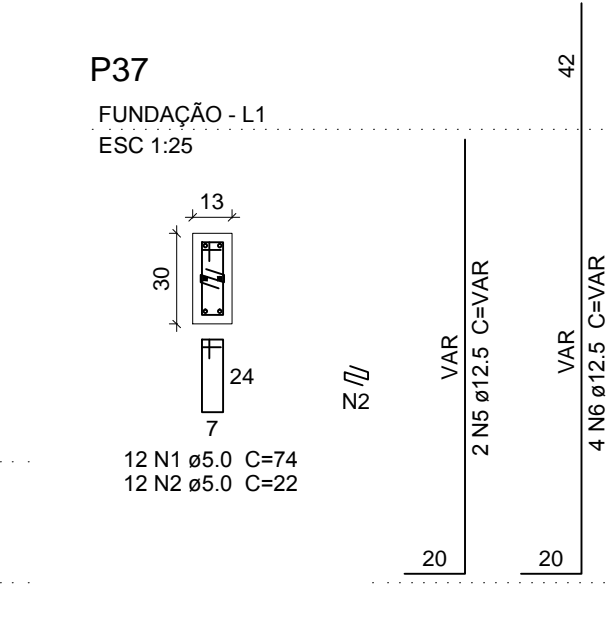
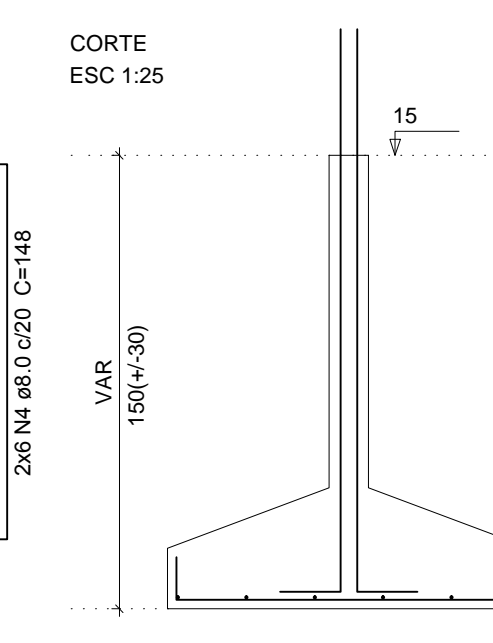
CORTE
ESC 1:25



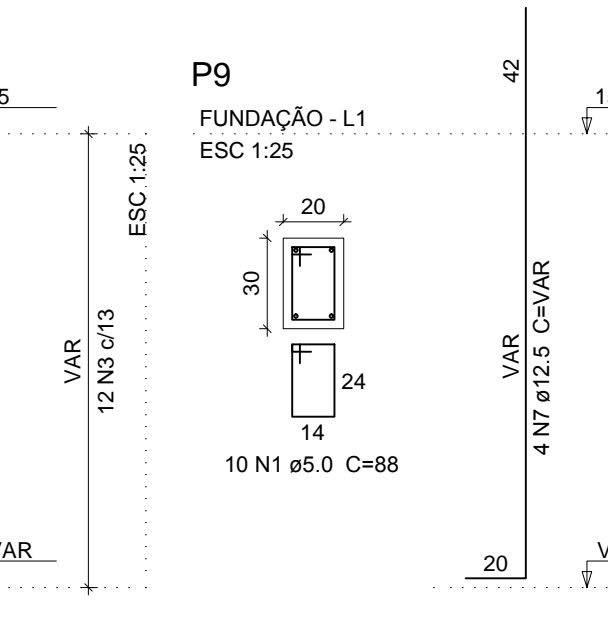
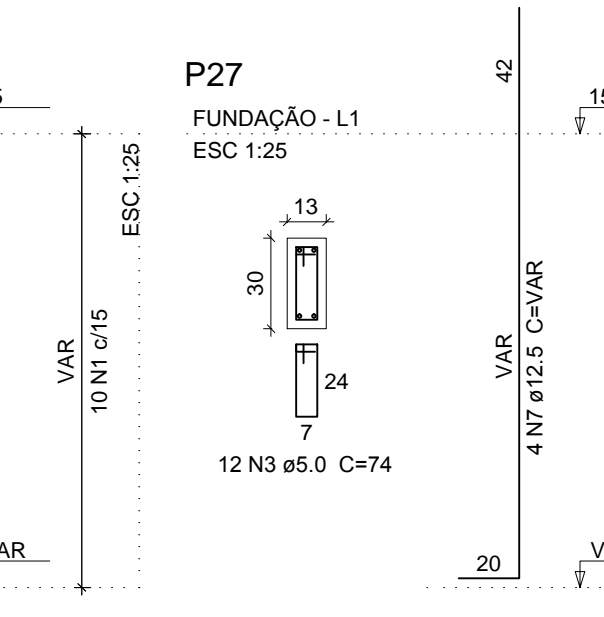
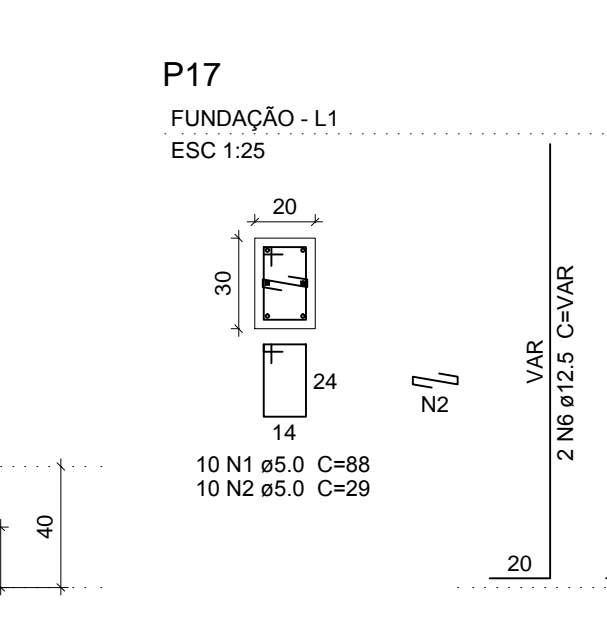
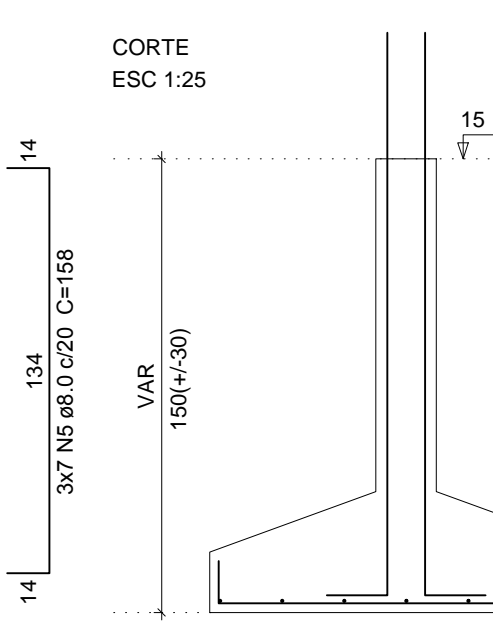
CORTE
ESC 1:25



CORTE
ESC 1:25



CORTE
ESC 1:25



Relação do aço

ELEMENTO	AÇO	N	DIAM (mm)	QUANT	C.UNIT (cm)	C.TOTAL (cm)
S2	CA60	1	5.0	40	88	3520
	CA60	2	5.0	12	74	888
	CA50	3	8.0	30	128	3840
	CA50	4	8.0	30	138	4140
S9	CA50	5	12.5	20	VAR	VAR
	CA60	1	5.0	20	88	1760
	CA60	2	5.0	10	29	290
	CA60	3	5.0	12	74	888
	CA50	4	8.0	24	148	3552
	CA50	5	8.0	21	158	3318
S14	CA50	6	12.5	2	VAR	VAR
	CA50	7	12.5	12	VAR	VAR
	CA60	1	5.0	80	74	13320
	CA60	2	5.0	24	22	528
	CA50	3	8.0	75	98	7350
	CA50	4	8.0	60	118	7080
S18	CA50	5	12.5	60	VAR	VAR
	CA50	6	12.5	4	VAR	VAR
	CA60	1	5.0	60	88	5280
	CA60	2	5.0	20	29	580
	CA60	3	5.0	108	74	7992
	CA50	4	8.0	90	118	10620
9xS21	CA50	5	8.0	75	128	9600
	CA50	6	12.5	4	VAR	VAR
	CA50	7	12.5	60	VAR	VAR
	CA60	1	5.0	108	74	7992
	CA50	2	8.0	45	88	3960
	CA50	3	8.0	36	108	3888
S48	CA50	4	12.5	36	VAR	VAR
	CA60	1	5.0	24	74	1776
	CA60	2	5.0	12	22	264
	CA50	3	8.0	14	138	1932
	CA50	4	8.0	12	148	1776
	CA50	5	12.5	2	VAR	VAR
	CA50	6	12.5	8	VAR	VAR

Resumo do aço

AÇO	DIAM (mm)	C.TOTAL (m)	PESO (kg)
CA50	8.0	810.6	240.9
CA60	12.5	423.1	407.8
CA60	5.0	450.8	69.5
PESO TOTAL (kg)			
CA50		648.5	
CA60		69.5	

Volume de concreto (C-30) = 15.54 m³
Área de forma = 104.73 m²

REVISÕES	DATA	VISTO
5		
4		
3		
2		
1		

PROPRIETÁRIO:	Prefeitura Municipal de Macaíba
OBRA:	Complexo Esportivo de Macaíba
ENDEREÇO:	Rua José Coelho, Vila Olímpica - Macaíba/RN
AUTOR DO PROJETO:	Engº Manoel Beneditos Filho

PROPRIETÁRIO:	Prefeitura de Macaíba
AUTOR DO PROJETO:	Manoel Beneditos Filho
CREA:	2100942603



PREFEITURA MUNICIPAL DE MACAÍBA

SECRETARIA MUNICIPAL DE INFRAESTRUTURA

Setor de Engenharia
Rua Dr. Pedro Maciel, 310, Centro - Macaíba/RN - CEP: 56280-000

Projeto Estrutural com Fundações

DERENHO: Beneditos

ÁREA: 733,86 m²

ESCALA: Indicada

DATA: Jan / 2019

2/15