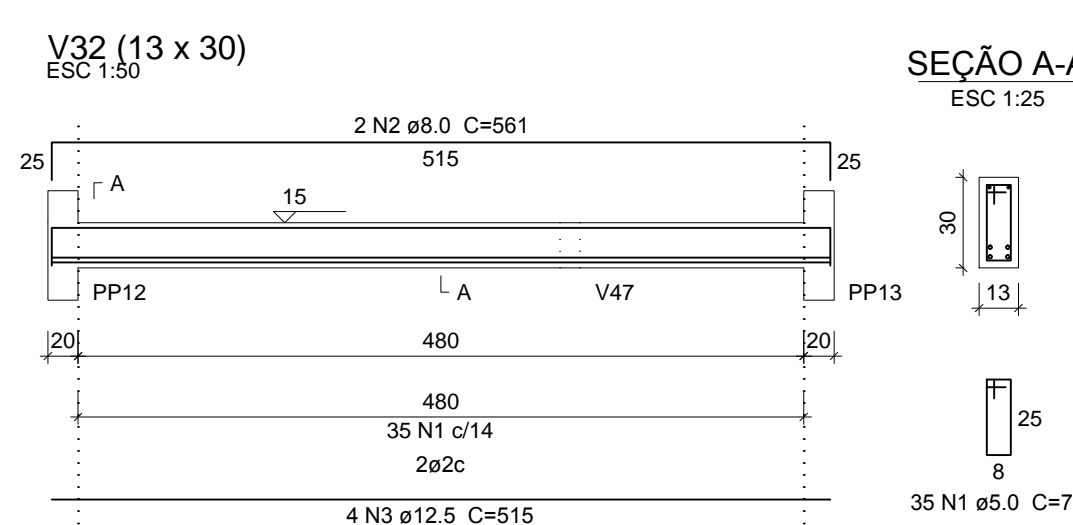
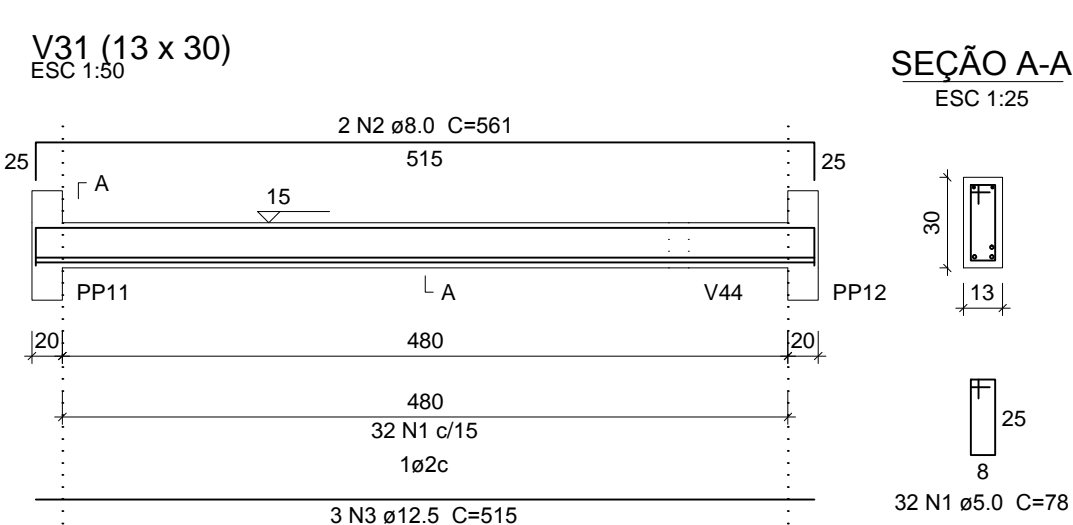
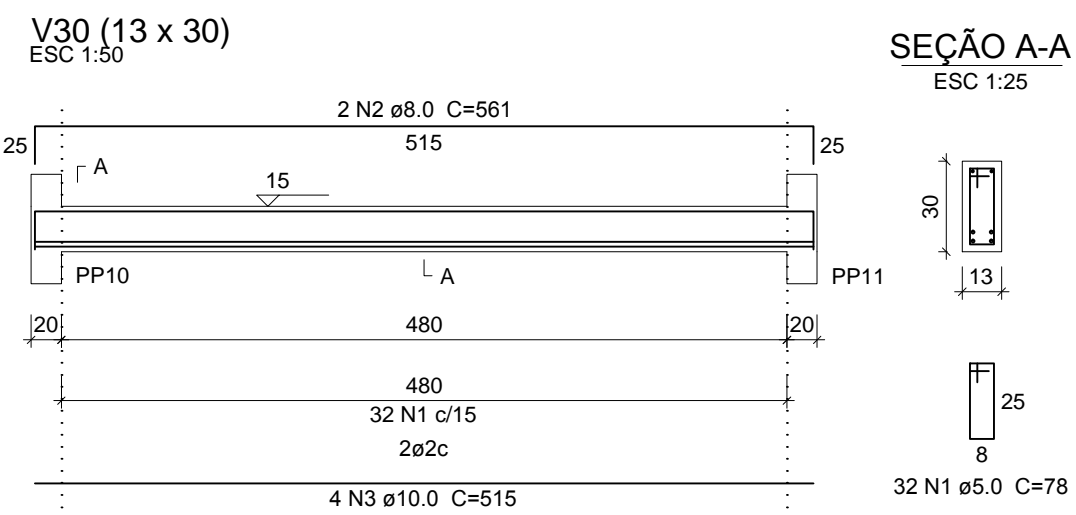
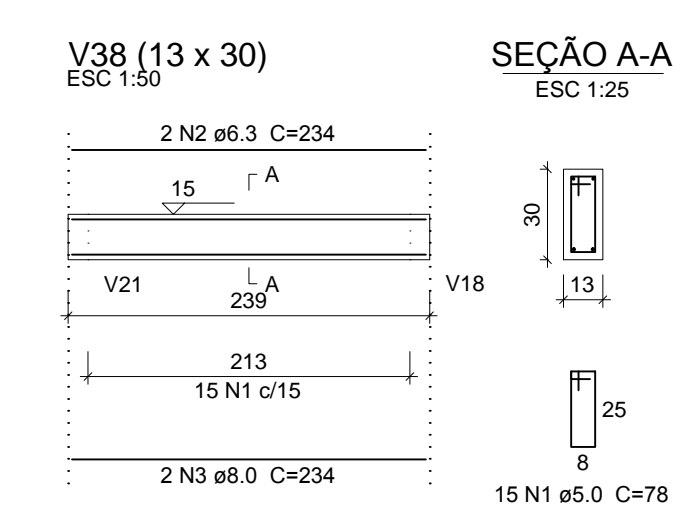
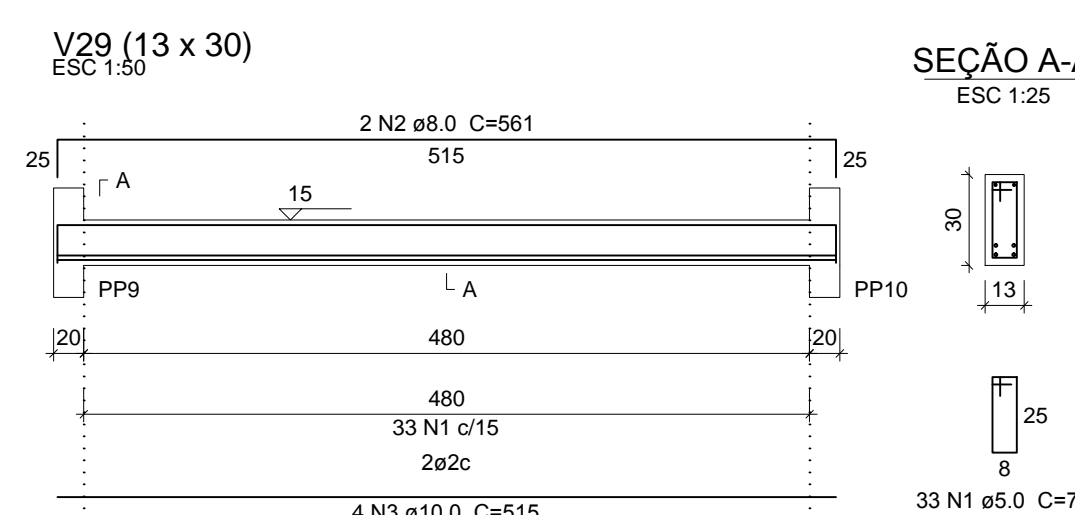
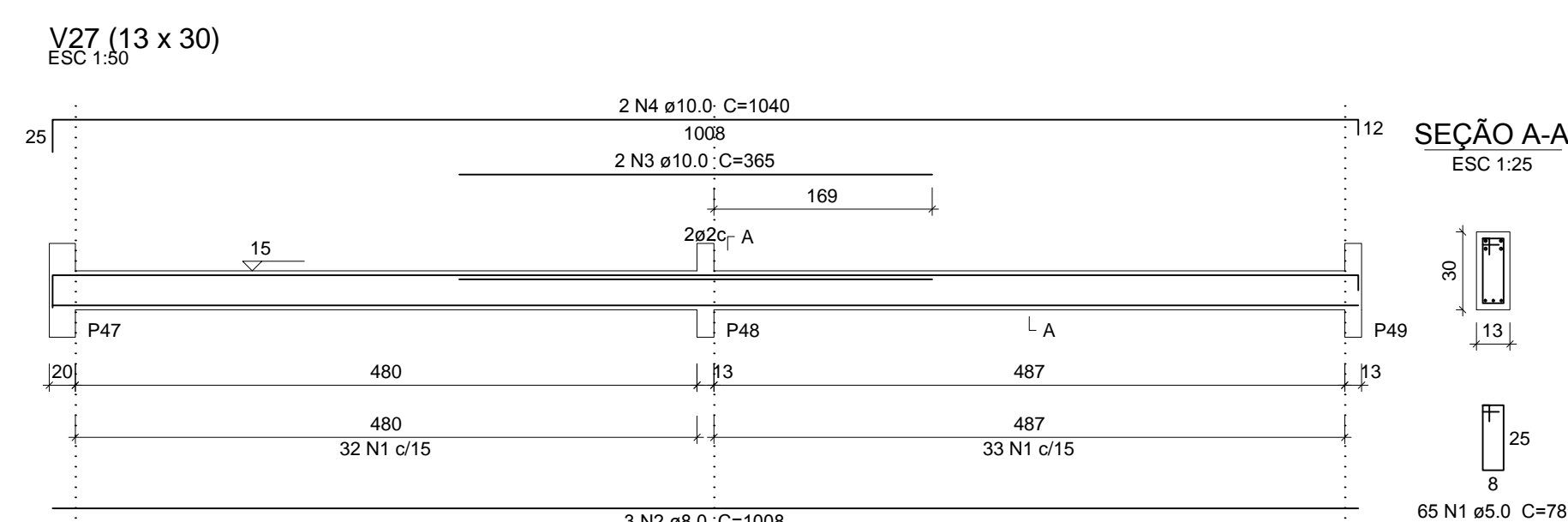
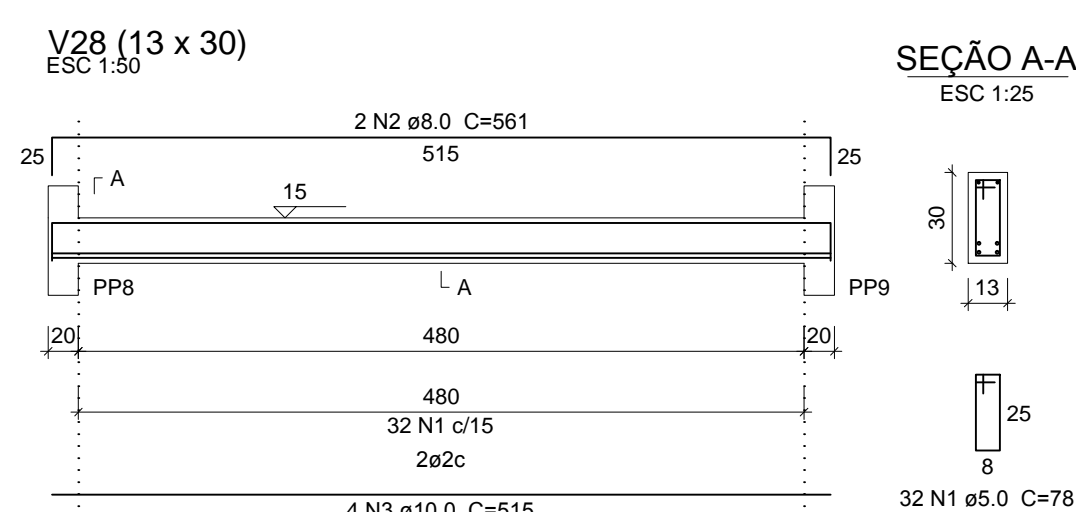
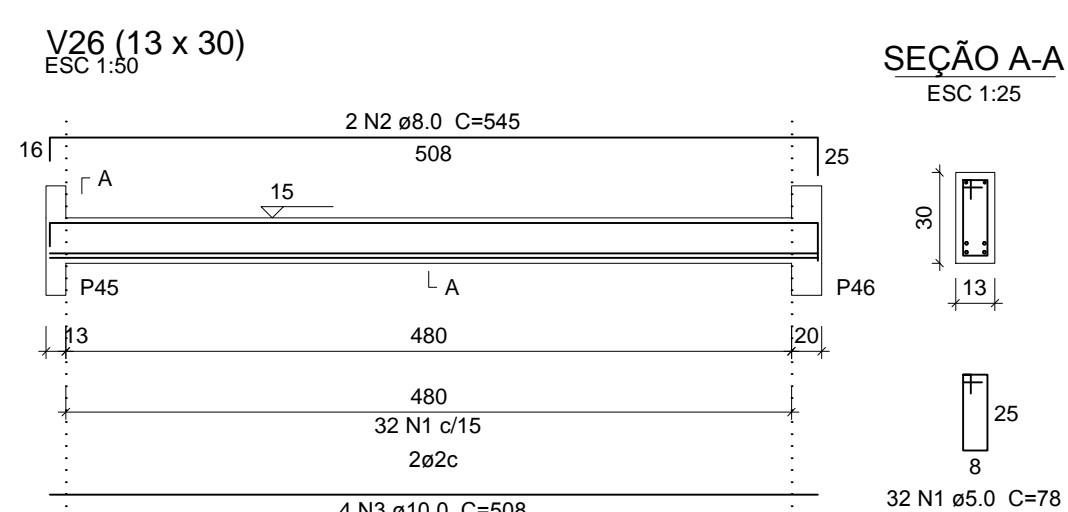
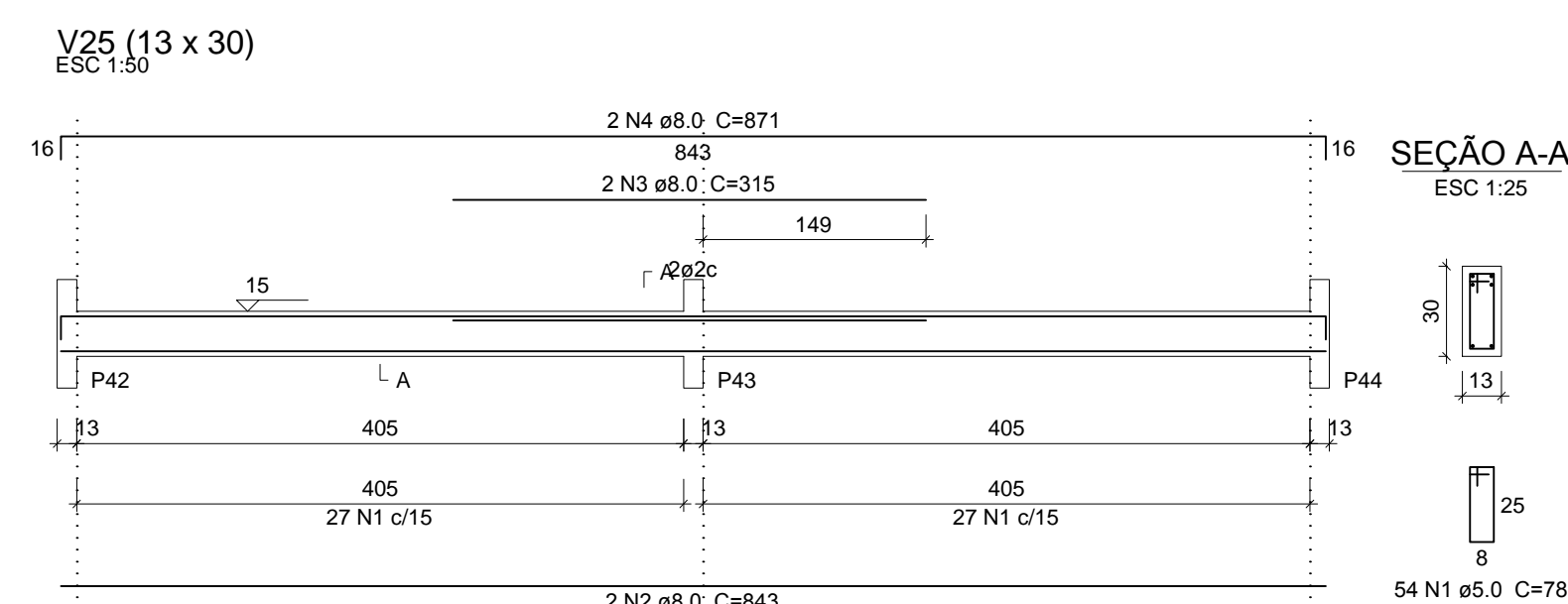
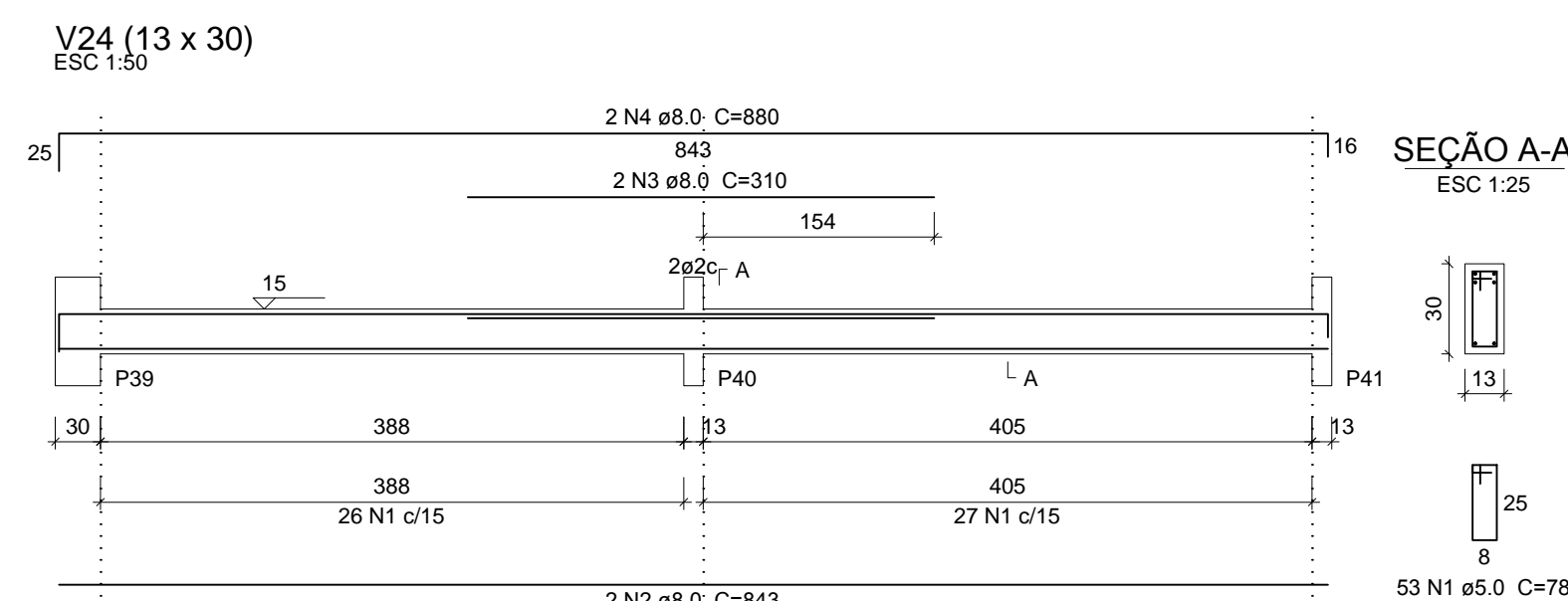
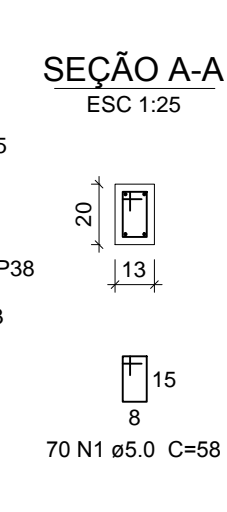
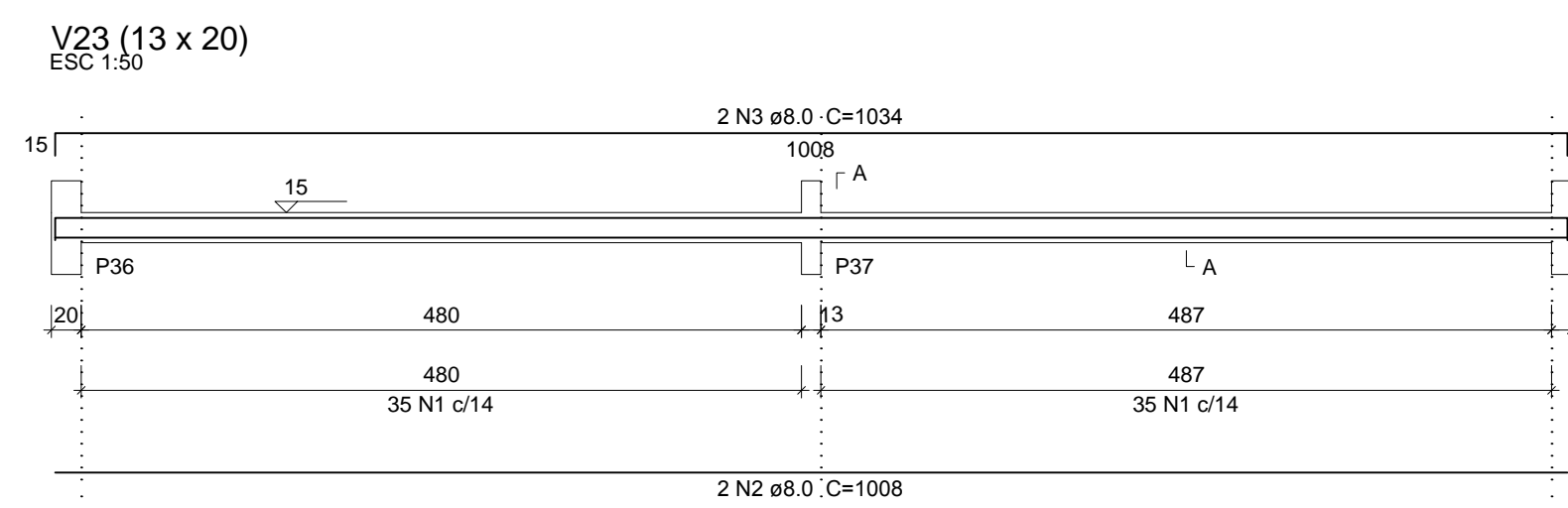
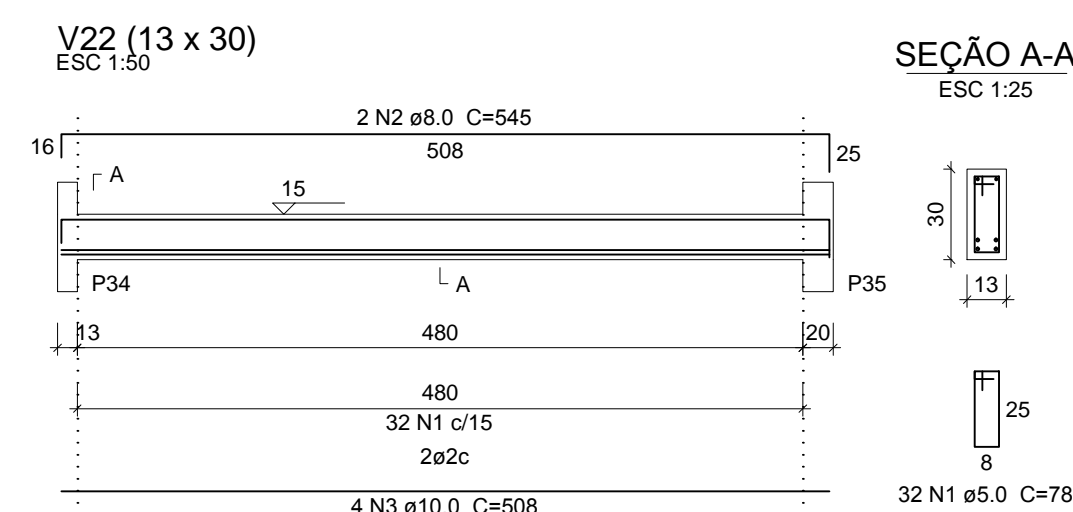
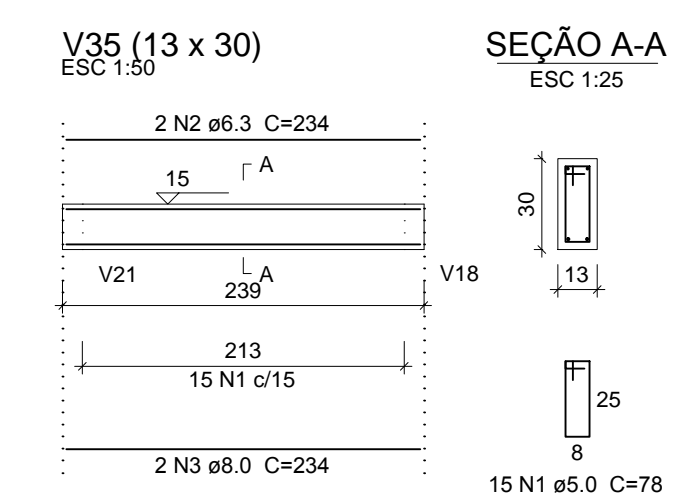
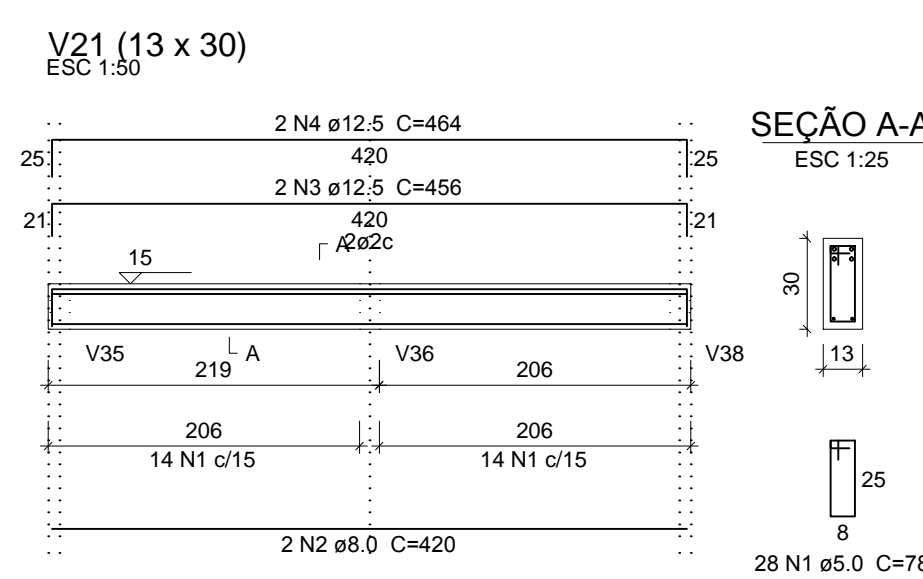
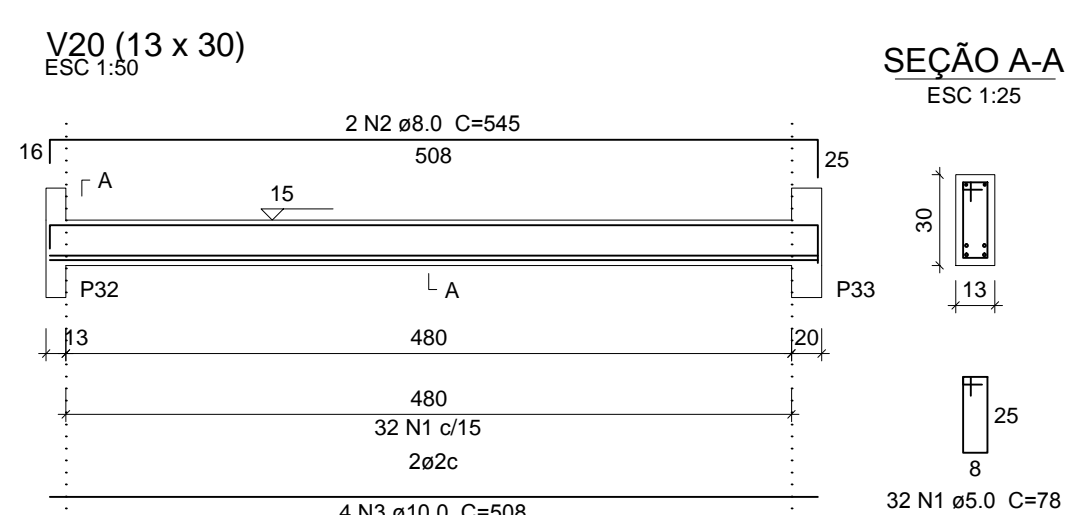
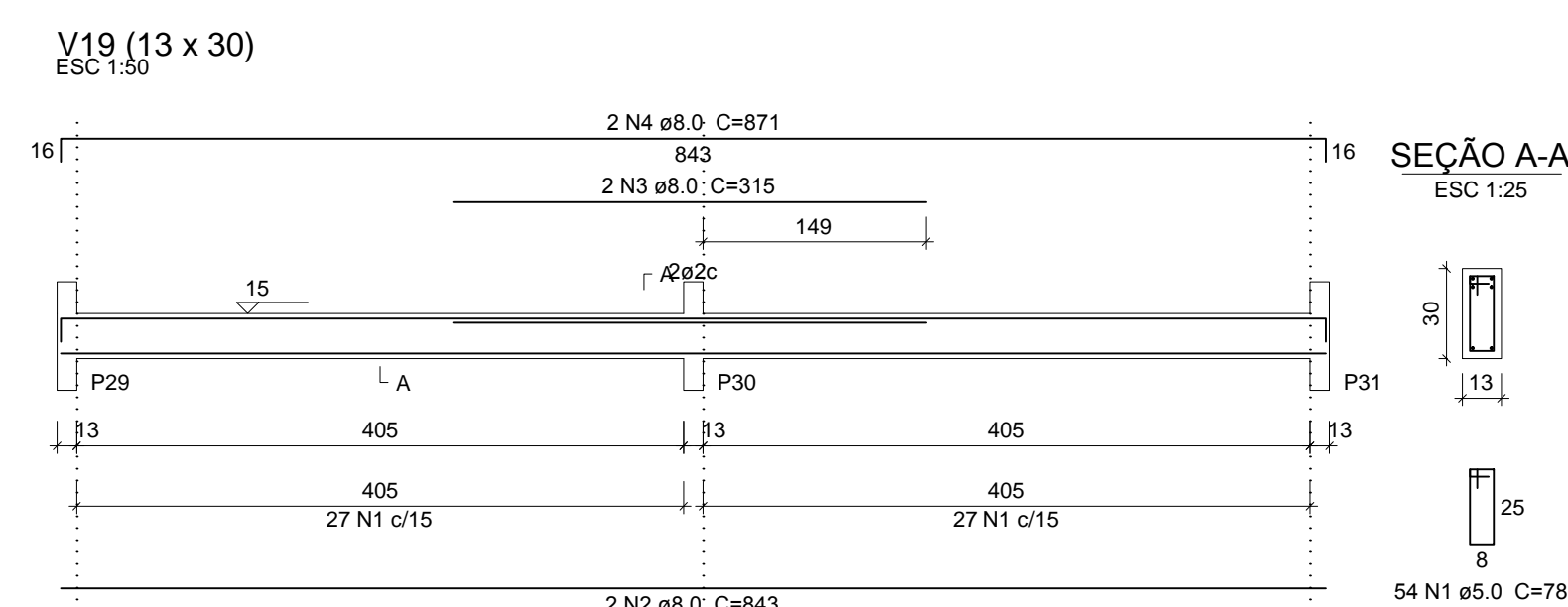


NOTAS GERAIS

- 1- DIMENSÕES E ELEVAÇÕES EM CENTÍMETRO
- 2- TAXA ADMISSÍVEL DO TERRENO 1,0kg/cm² (Estimada)



Relação do aço

ELEMENTO	AÇO	N	DIAM (mm)	QUANT	C.UNIT (cm)	C.TOTAL (cm)
V19	CA60	1	5.0	54	78	4212
	CA50	2	8.0	2	843	1686
V20	CA50	3	8.0	2	315	630
	CA60	4	8.0	2	871	1742
V21	CA60	1	5.0	32	78	2496
	CA50	2	8.0	2	545	1090
V22	CA50	3	10.0	4	508	2032
	CA60	1	5.0	28	78	2184
V23	CA50	2	8.0	2	420	840
	CA50	3	12.5	2	456	912
V24	CA50	4	12.5	2	464	928
	CA60	1	5.0	32	78	2496
V25	CA50	2	8.0	2	545	1090
	CA50	3	10.0	4	508	2032
V26	CA60	1	5.0	70	58	4060
	CA50	2	8.0	2	1008	2016
V27	CA50	3	8.0	2	1034	2068
	CA60	1	5.0	53	78	4134
V28	CA50	2	8.0	2	843	1686
	CA50	3	8.0	2	310	620
V29	CA50	4	8.0	2	880	1760
	CA60	1	5.0	54	78	4212
V30	CA50	2	8.0	2	843	1686
	CA50	3	8.0	2	315	630
V31	CA50	4	8.0	2	871	1742
	CA60	1	5.0	32	78	2496
V32	CA50	2	8.0	2	545	1090
	CA50	3	10.0	4	508	2032
V33	CA60	1	5.0	65	78	5070
	CA50	2	8.0	3	1008	3024
V34	CA50	3	10.0	2	365	730
	CA50	4	10.0	2	1040	2080
V35	CA60	1	5.0	32	78	2496
	CA50	2	8.0	2	561	1122
V36	CA50	2	8.0	2	561	1122
	CA50	3	10.0	4	515	2060
V37	CA50	3	10.0	4	515	2060
	CA60	1	5.0	33	78	2574
V38	CA50	2	8.0	2	561	1122
	CA50	3	10.0	4	515	2060
V39	CA60	1	5.0	32	78	2496
	CA50	2	8.0	2	561	1122
V40	CA50	3	10.0	4	515	2060
	CA60	1	5.0	32	78	2496
V41	CA50	2	8.0	2	561	1122
	CA50	3	12.5	3	515	1545
V42	CA60	1	5.0	35	78	2730
	CA50	2	8.0	2	561	1122
V43	CA50	3	12.5	4	515	2060
	CA60	1	5.0	15	78	1170
V44	CA50	2	6.3	2	234	468
	CA50	3	8.0	2	234	468
V45	CA60	1	5.0	15	78	1170
	CA50	2	6.3	2	234	468
V46	CA60	3	8.0	2	234	468
	CA50	3	8.0	2	234	468

Resumo do aço

AÇO	DIAM (mm)	C.TOTAL (m)	PESO (kg)
CA50	6.3	9.4	2.3
CA50	8.0	299.5	118.2
CA50	10.0	150.9	93
CA50	12.5	54.5	52.5
CA60	5.0	465	71.7
PESO TOTAL (kg)			
CA50		265.9	
CA60		71.7	
Volume de concreto (C-30) = 3.62 m³			
Área de forma = 68.14 m²			

REVISÕES	DATA	VISTO
5		
4		
3		
2		
1		

PROPRIETÁRIO: Prefeitura Municipal de Macaíba

OBRA: Complexo Esportivo de Macaíba

ENDEREÇO: Rua José Coelho, Vila Olímpica-Macaíba/RN

AUTOR DO PROJETO: Engº Manoel Benedito Filho

PROPRIETÁRIO: Prefeitura de Macaíba

AUTOR DO PROJETO: Manoel Benedito Filho CREA: 21009426/3

EMPROTEC
ENGENHARIA
PROJETANDO O FUTURO

EMPRESA DE PROJETOS TÉCNICOS E
CONSTRUÇÃO CIVIL LTDA

CNPJ: 16.860.880/0001-10
AVENIDA JOSÉ FERREIRA DE MEDEIROS, 188, 3 A 1
SANTA CRUZ/RN - CEP: 59.200-000
TEL: (84) 3291-2250/345-1735
E-MAIL: emprotecengenharia@gmail.com

PREFEITURA MUNICIPAL DE MACAÍBA

SECRETARIA MUNICIPAL DE INFRAESTRUTURA

Setor de Engenharia
Rua Dr. Pedro Maciel, 310, Centro-Macaíba/RN - CEP: 59280-000

Projeto Estrutural com Fundações

DERECHO: Benedito

ÁREA: 733,85 m²

ESCALA: Indicada

DATA: Jan / 2019