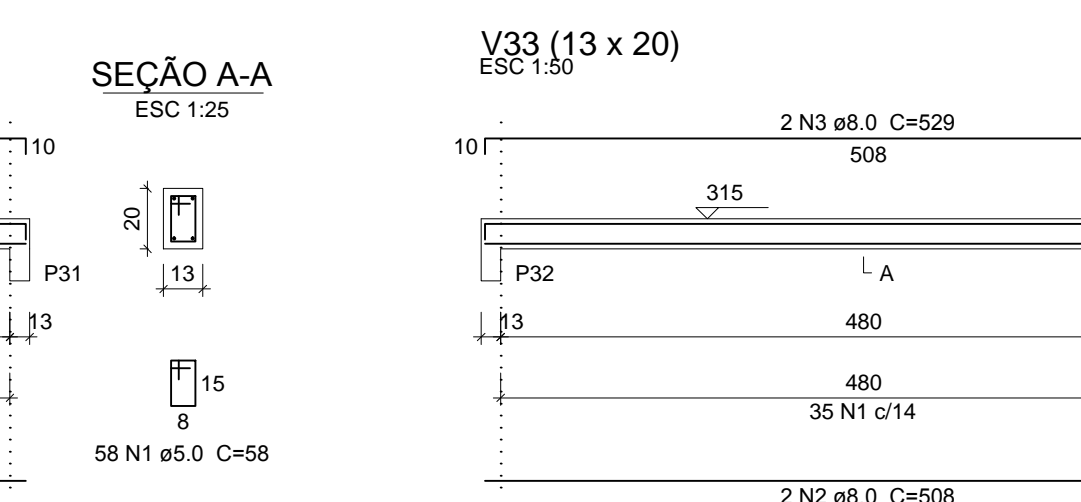
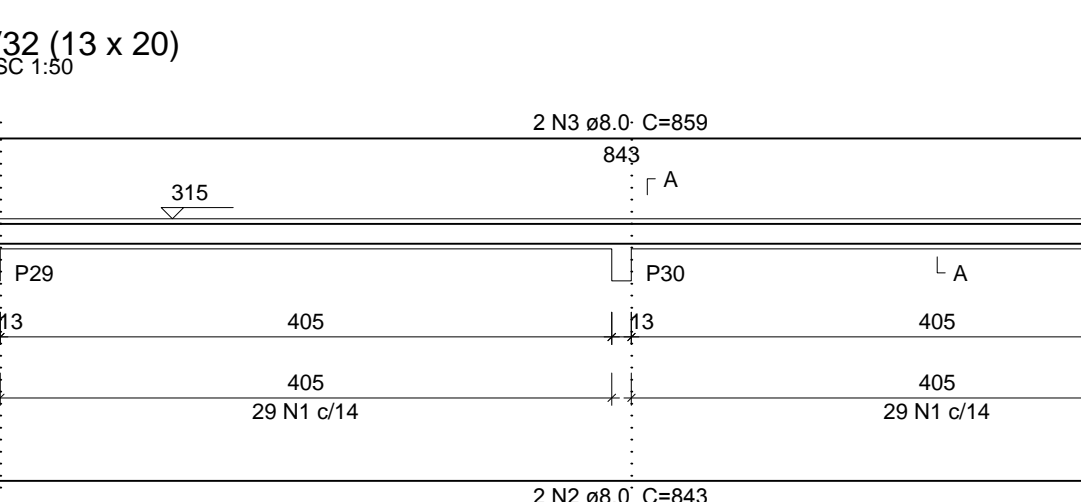
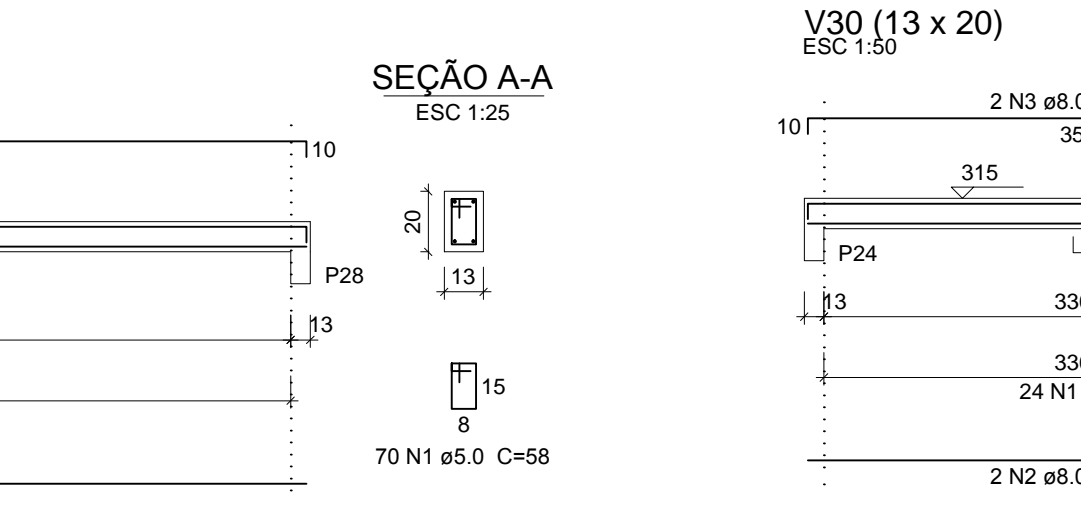
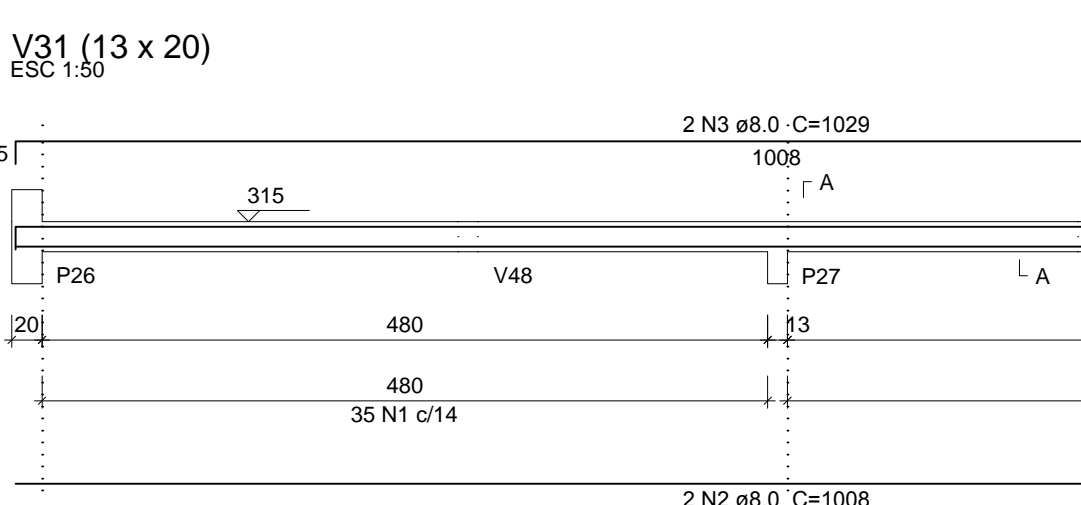
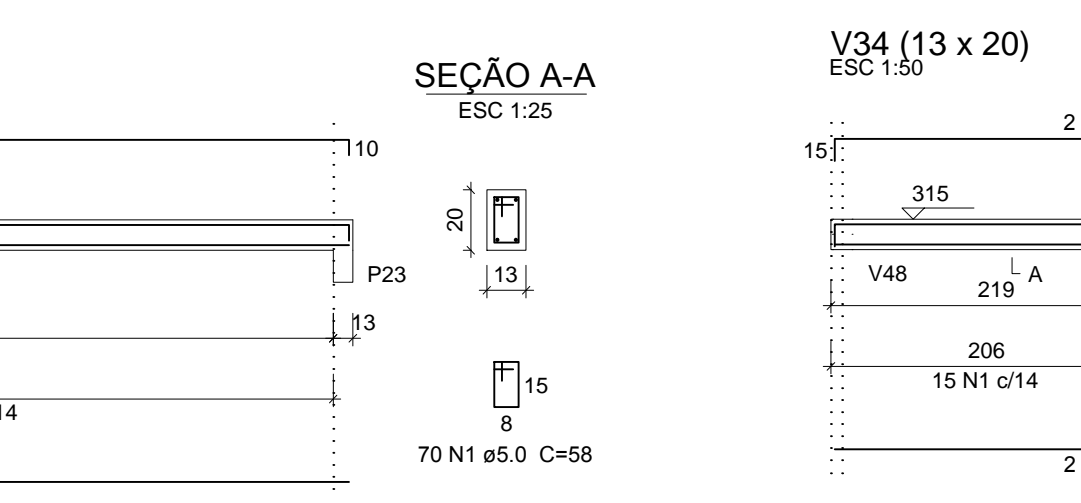
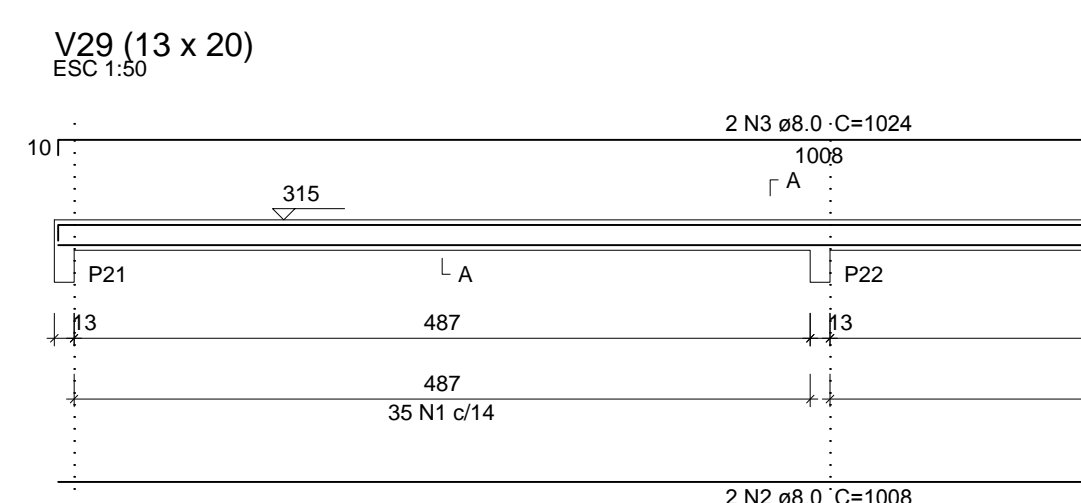
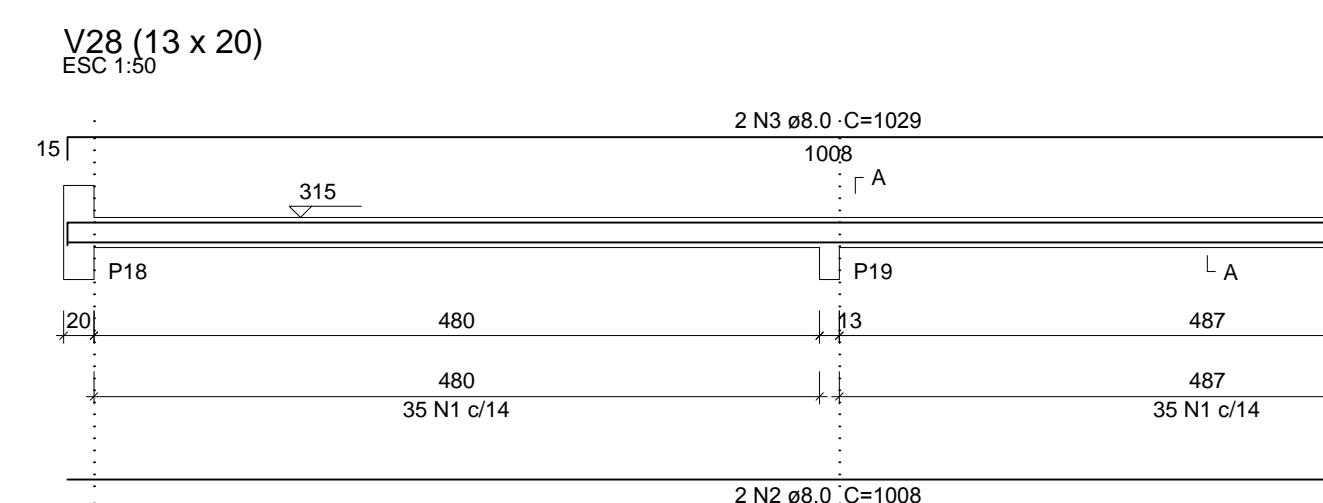
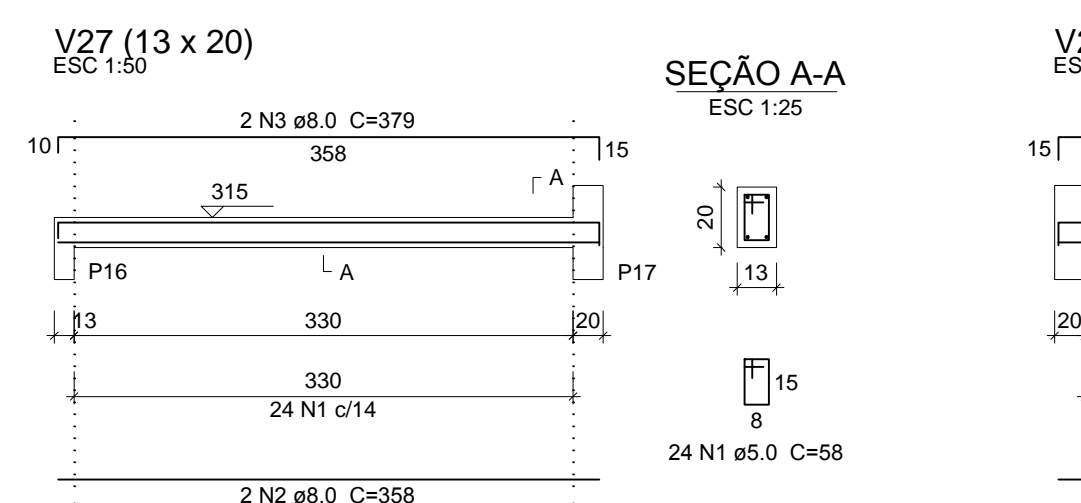
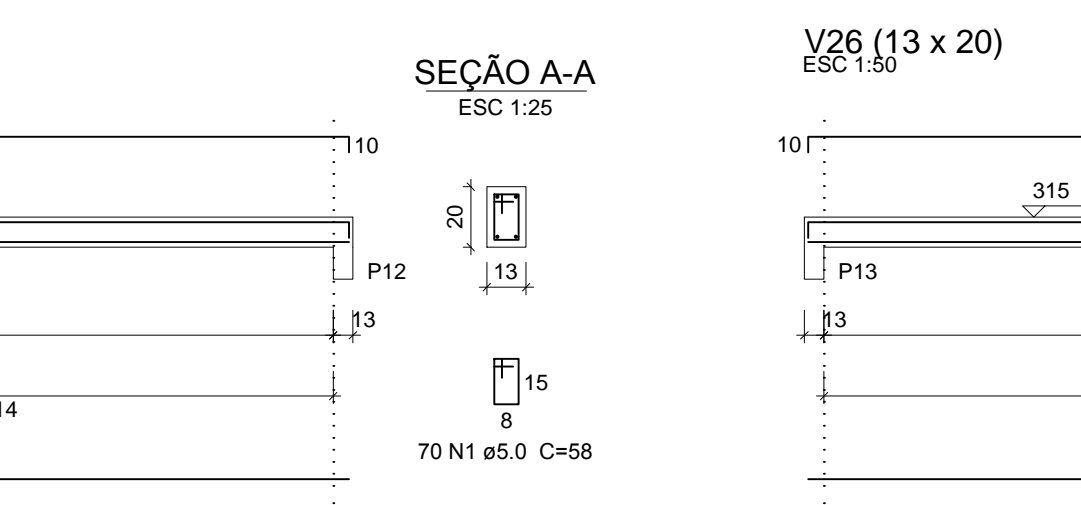
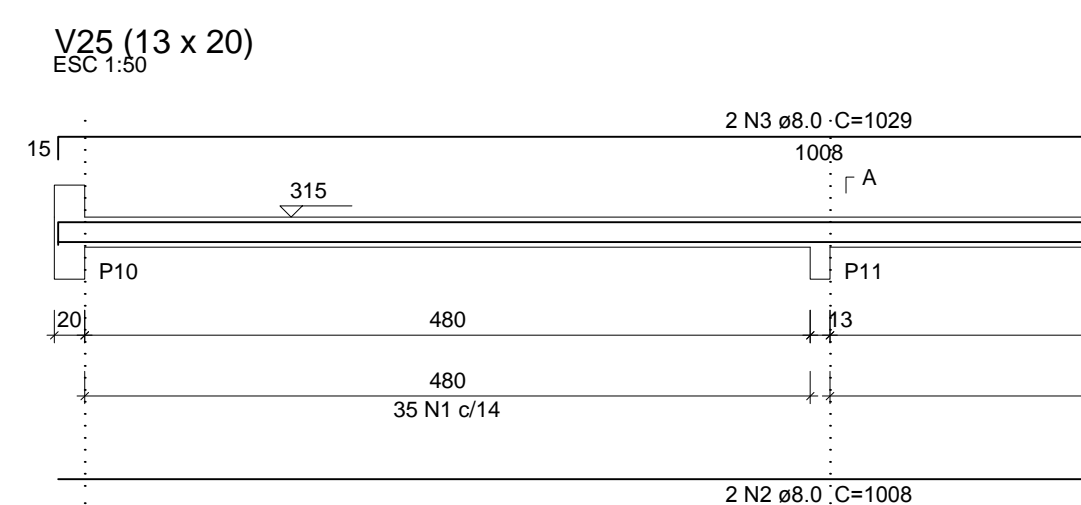
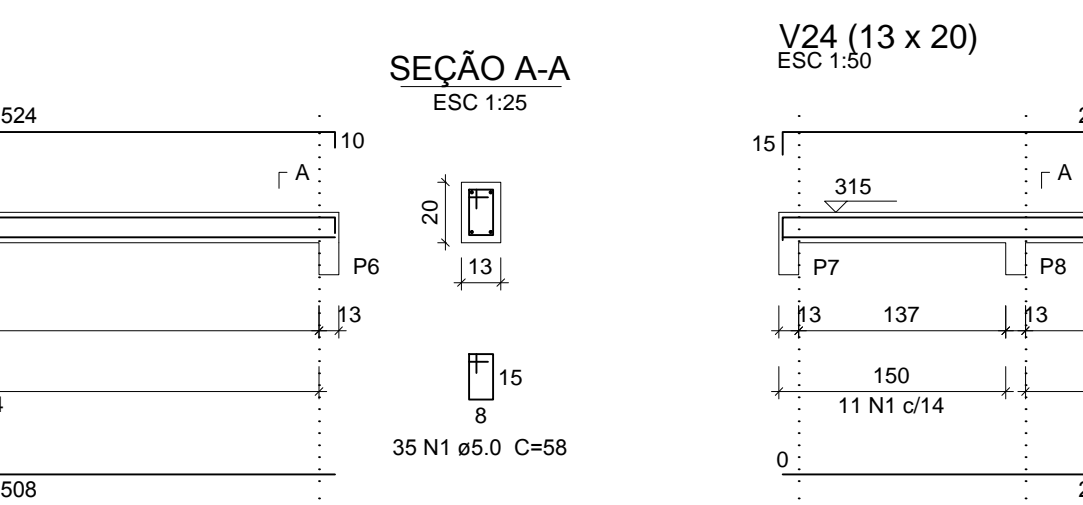
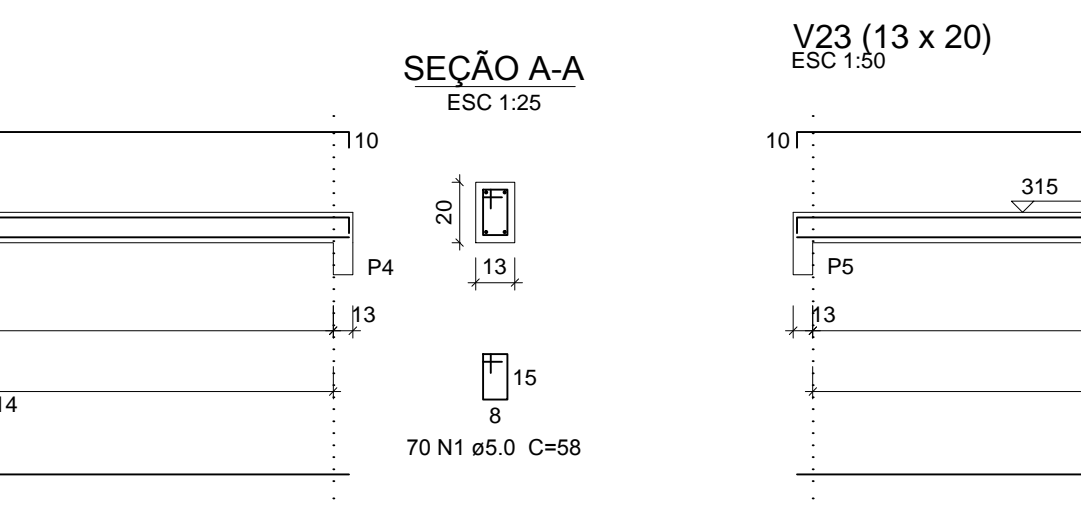
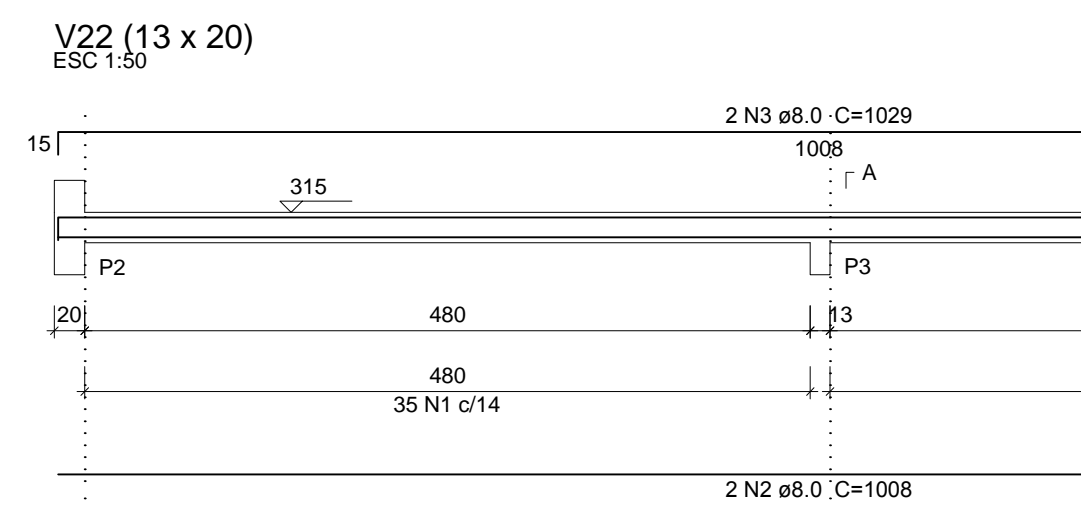
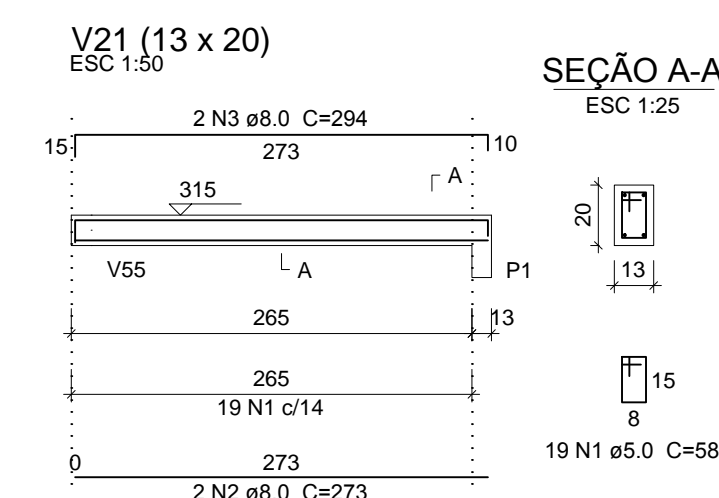
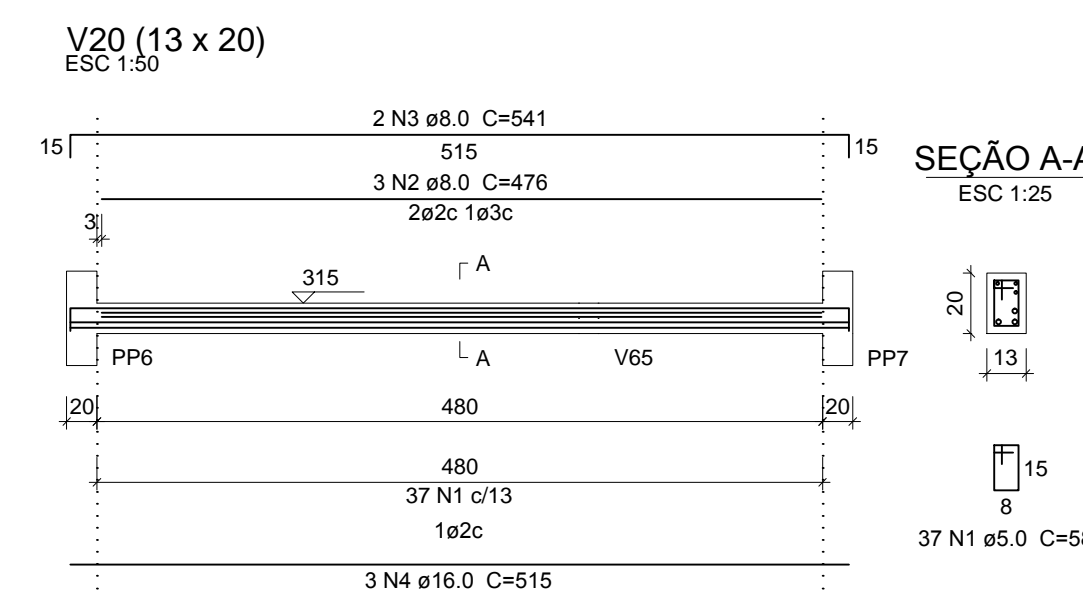
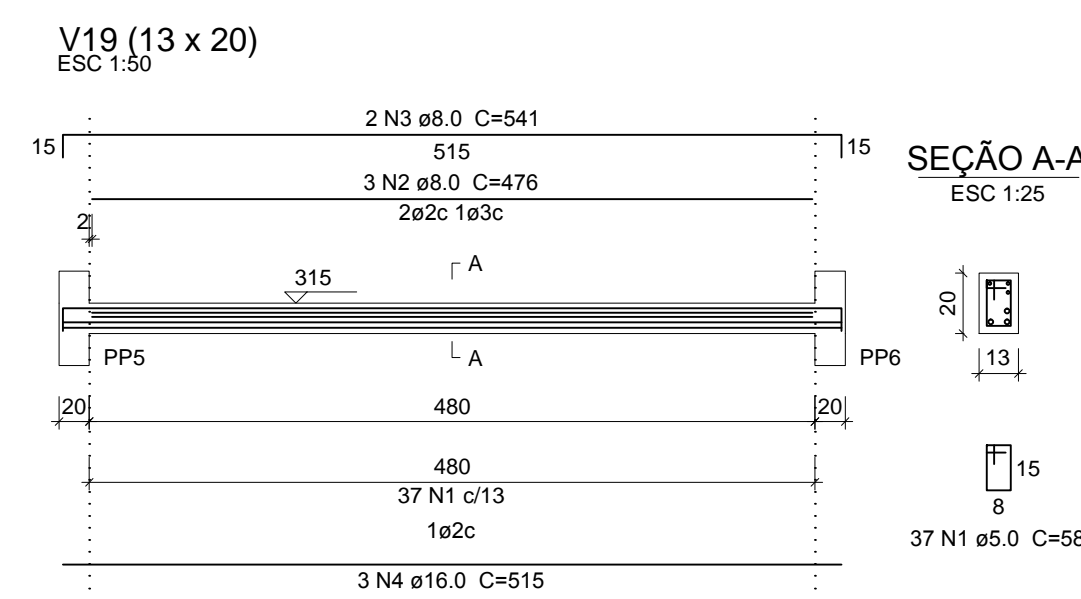
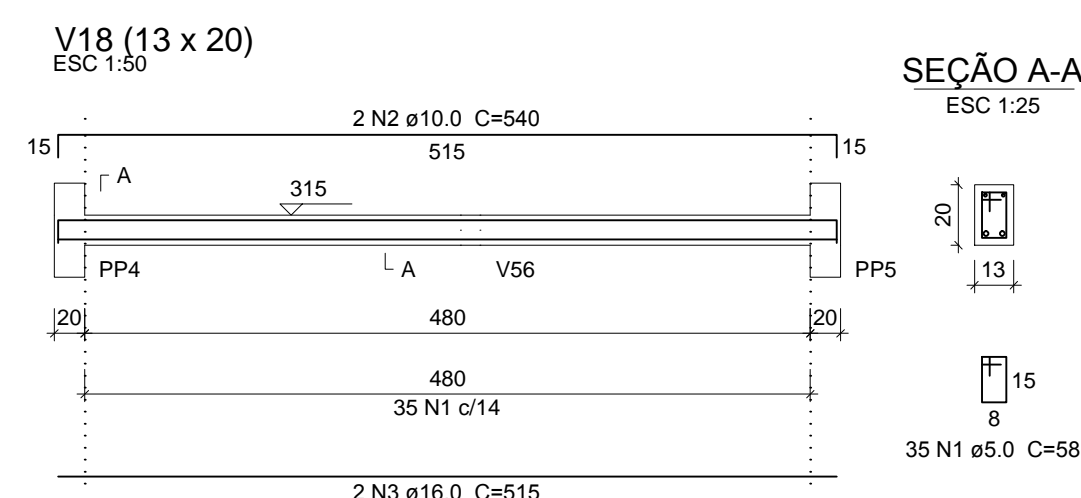


NOTAS GERAIS

- 1- DIMENSÕES E ELEVAÇÕES EM CENTÍMETRO
- 2- TAXA ADMISSÍVEL DO TERRENO 1,0kg/cm² (Estimada)



Relação do aço

ELEMENTO	AÇO	N	DIAM (mm)	QUANT	C.UNIT (cm)	C.TOTAL (cm)
V18	CA60	1	5,0	35	58	2030
	CA50	2	10,0	2	540	1080
	CA50	3	16,0	2	515	1030
V19	CA60	1	5,0	37	58	2146
	CA50	2	8,0	3	476	1428
	CA50	3	8,0	2	541	1082
	CA50	4	16,0	3	515	1545
V20	CA60	1	5,0	37	58	2146
	CA50	2	8,0	3	476	1428
	CA50	3	8,0	2	541	1082
	CA50	4	16,0	3	515	1545
V21	CA60	1	5,0	19	58	1102
	CA50	2	8,0	2	273	546
	CA50	3	8,0	2	541	1082
V22	CA60	1	5,0	70	58	4060
	CA50	2	8,0	2	1008	2016
	CA50	3	8,0	2	1029	2058
V23	CA60	1	5,0	35	58	2030
	CA50	2	8,0	2	508	1016
	CA50	3	8,0	2	524	1048
V24	CA60	1	5,0	35	58	2030
	CA50	2	8,0	2	508	1016
	CA50	3	8,0	2	534	1068
V25	CA60	1	5,0	70	58	4060
	CA50	2	8,0	2	1008	2016
	CA50	3	8,0	2	1029	2058
V26	CA60	1	5,0	70	58	4060
	CA50	2	8,0	2	1008	2016
	CA50	3	8,0	2	1024	2048
V27	CA60	1	5,0	24	58	1392
	CA50	2	8,0	2	358	716
	CA50	3	8,0	2	379	758
V28	CA60	1	5,0	70	58	4060
	CA50	2	8,0	2	1008	2016
	CA50	3	8,0	2	1029	2058
V29	CA60	1	5,0	70	58	4060
	CA50	2	8,0	2	1008	2016
	CA50	3	8,0	2	1024	2048
V30	CA60	1	5,0	24	58	1392
	CA50	2	8,0	2	358	716
	CA50	3	8,0	2	379	758
V31	CA60	1	5,0	70	58	4060
	CA50	2	8,0	2	1008	2016
	CA50	3	8,0	2	1029	2058
V32	CA60	1	5,0	35	58	2030
	CA50	2	8,0	2	843	1686
	CA50	3	8,0	2	859	1718
V33	CA60	1	5,0	35	58	2030
	CA50	2	8,0	2	508	1016
	CA50	3	8,0	2	529	1058
V34	CA60	1	5,0	30	58	1740
	CA50	2	8,0	2	420	840
	CA50	3	8,0	2	446	892

Resumo do aço

AÇO	DIAM (mm)	C.TOTAL (m)	PESO (kg)
CA50	8,0	448,9	177,1
	10,0	10,8	6,7
	16,0	41,2	65
CA60	5,0	457,7	70,5
PESO TOTAL (kg)			
CA50	248,8		
CA60	70,5		
Volume de concreto (C-30) = 2,98 m ³			
Área de forma = 60,71 m ²			

5		
4		
3		
2		
1		
REVISÕES	DATA	VISTO
PROPRIETÁRIO:	Prefeitura Municipal de Macaíba	
OBRA:	Complexo Esportivo de Macaíba	
ENDEREÇO:	Rua José Coelho, Vila Olímpica-Macaíba/RN	
AUTOR DO PROJETO:	Eng ^o Manoel Benevides Filho	

PROPRIETÁRIO:	Prefeitura de Macaíba	
AUTOR DO PROJETO:	Manoel Benevides Filho	CREA: 2100942603



PREFEITURA MUNICIPAL DE MACAÍBA

SECRETARIA MUNICIPAL DE INFRAESTRUTURA

Setor de Engenharia

Rua Dr. Pedro Maciel, 310, Centro-Macaíba/RN - CEP: 56280-000

Projeto Estrutural com Fundações

DERECHO: Benevides

ÁREA: 733,86 m²

ESCALA: Indicada

DATA: Jan / 2019

12/15