

NOTAS GERAIS

- 1- DIMENSÕES E ELEVAÇÕES EM CENTÍMETRO
- 2- TAXA ADMISSÍVEL DO TERRENO 1.0kg/cm² (Estrada)

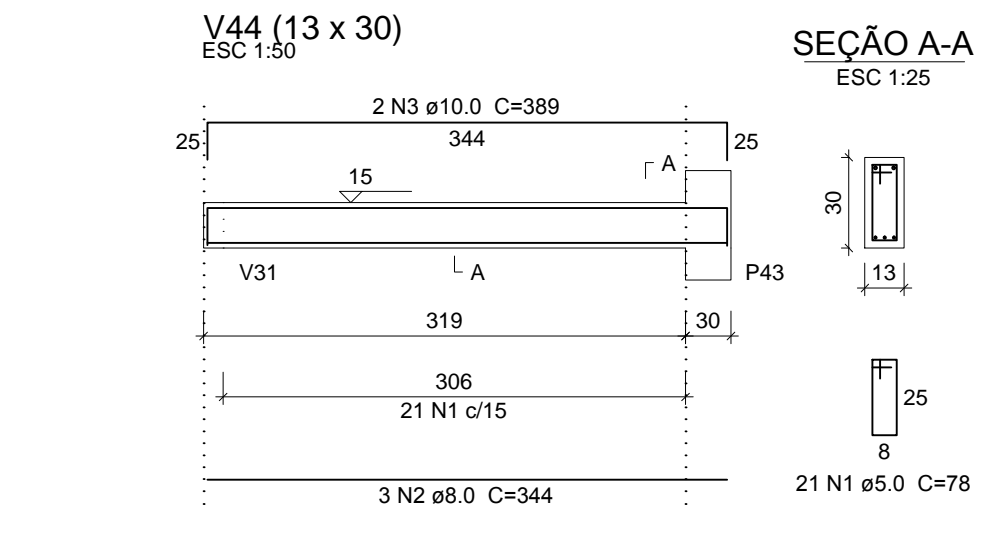
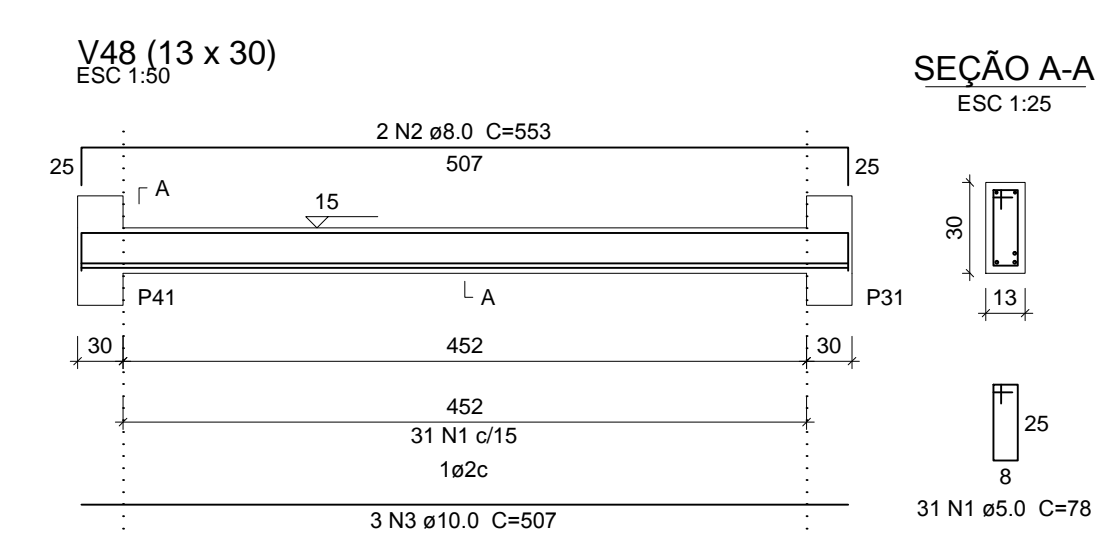
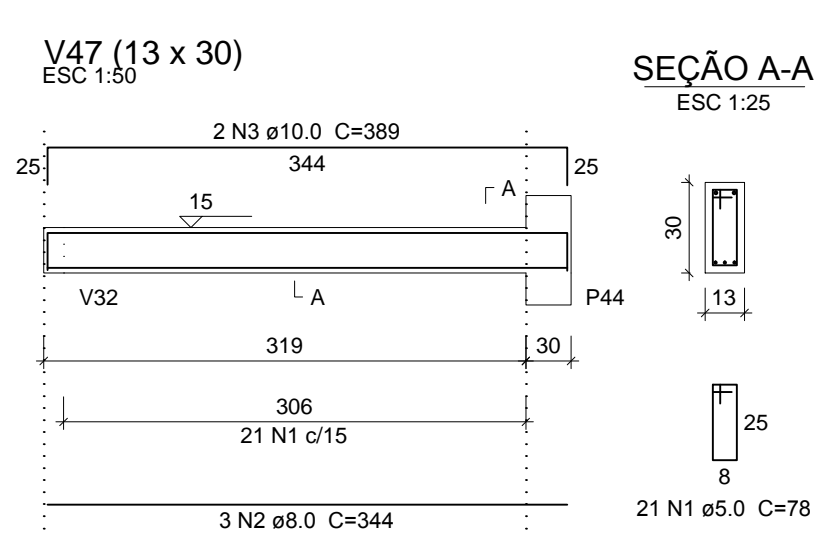
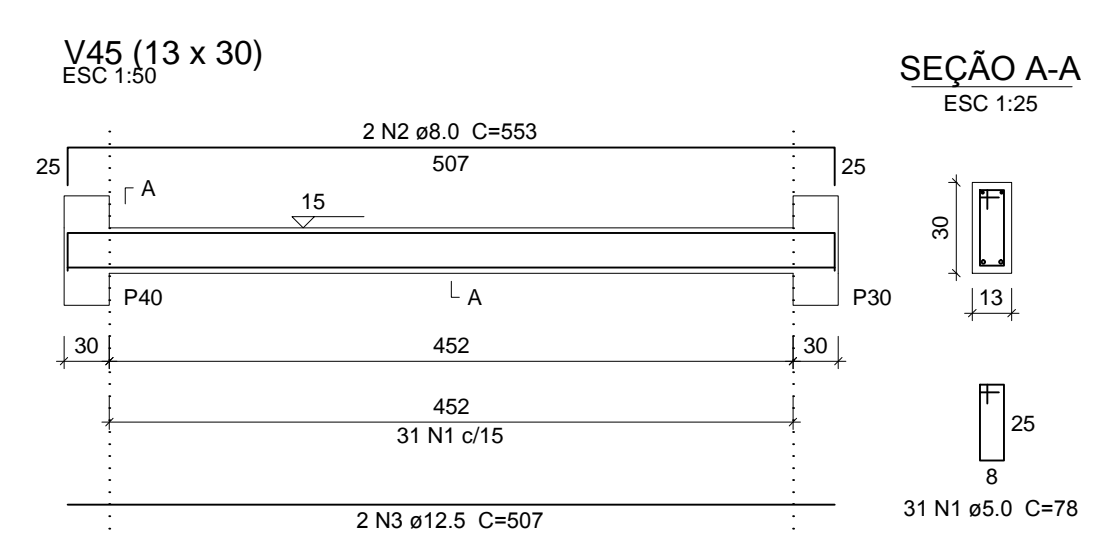
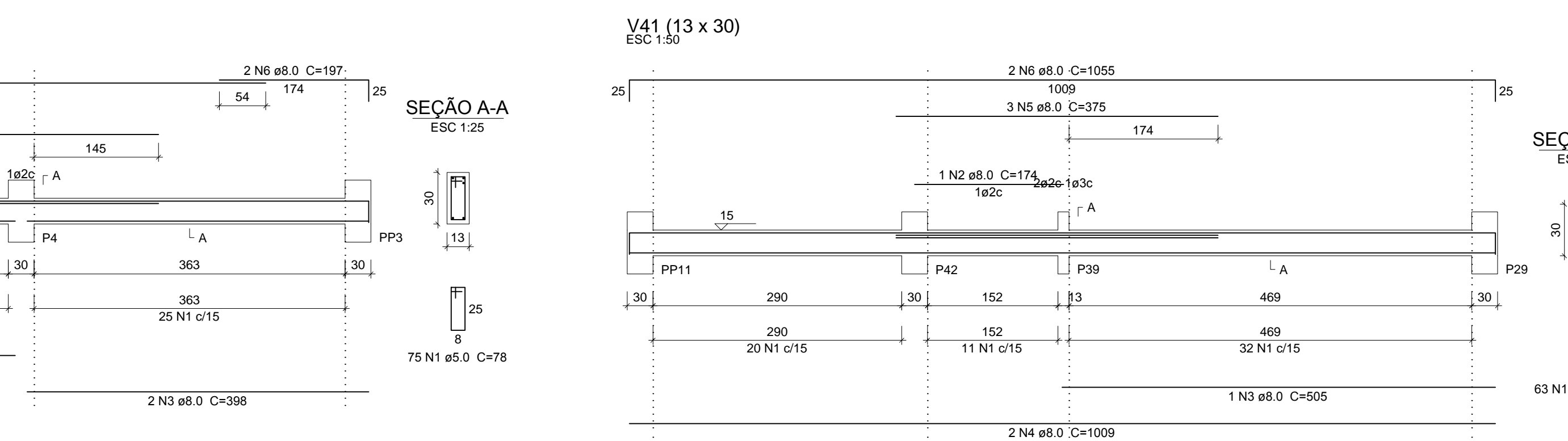
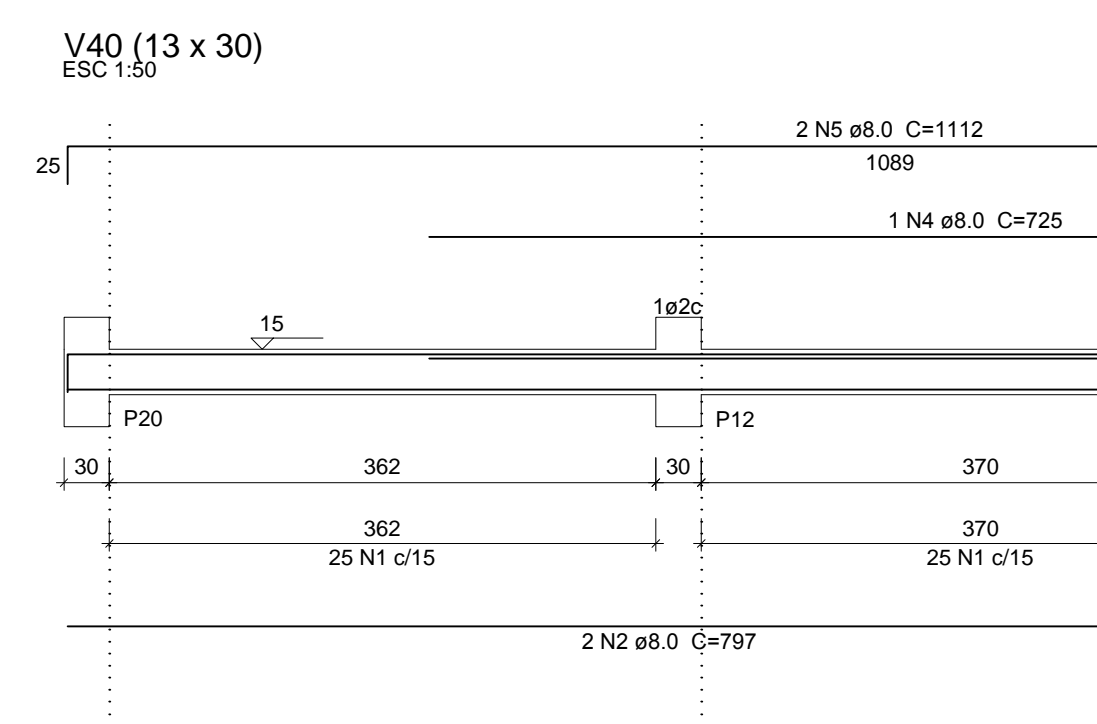
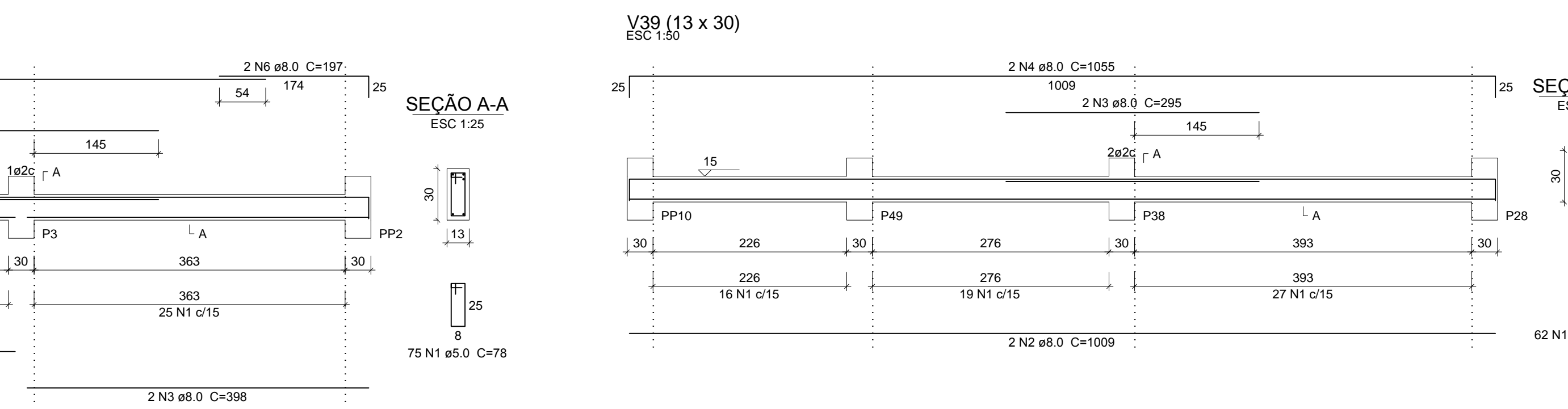
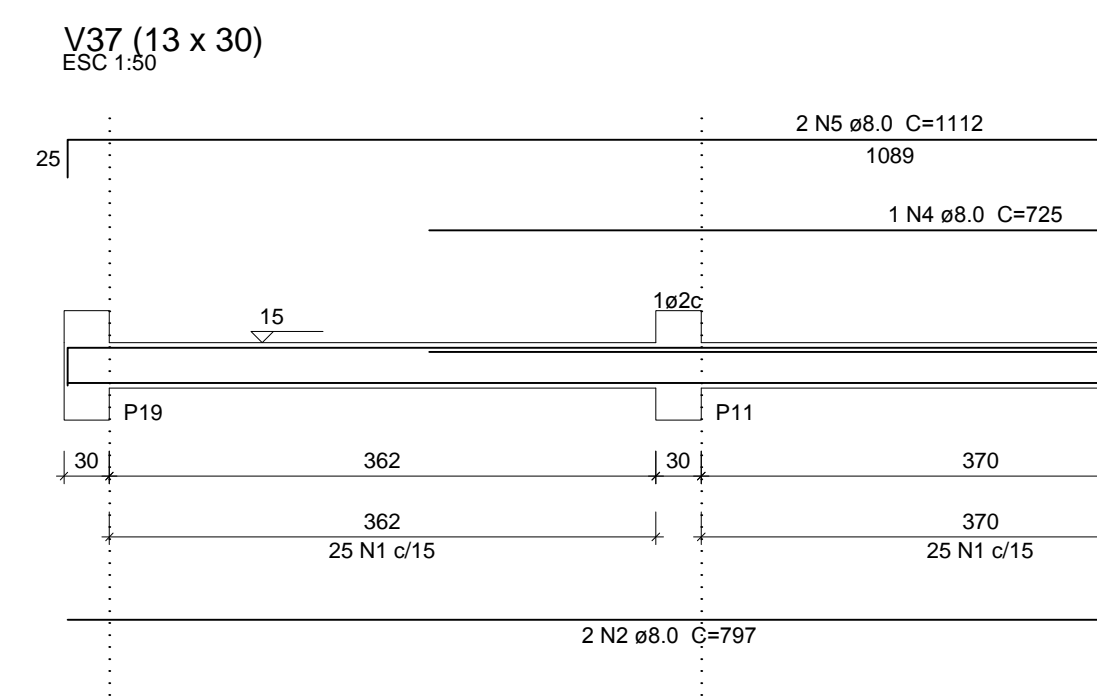
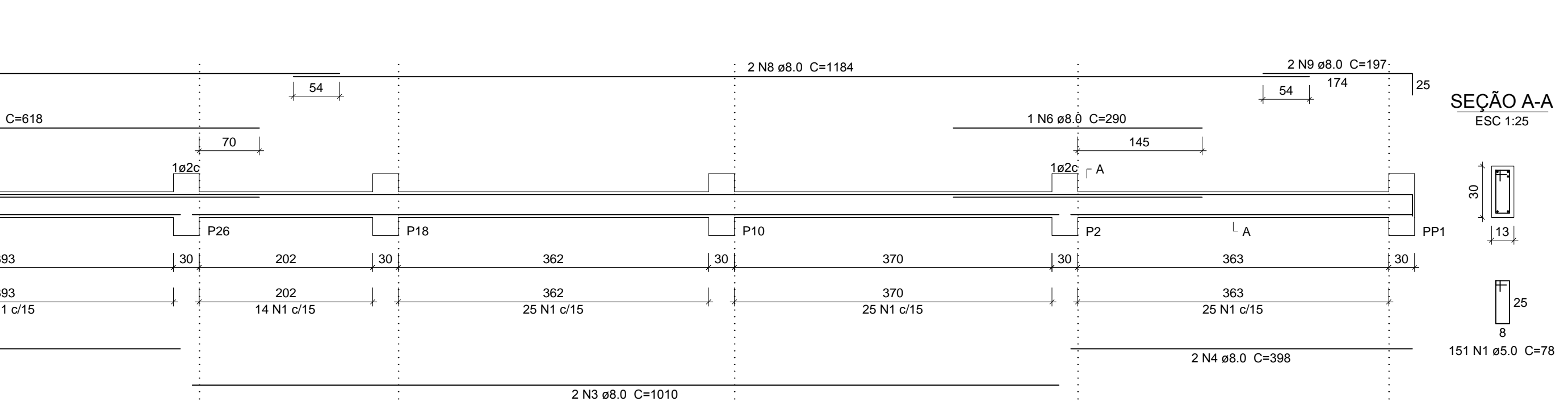
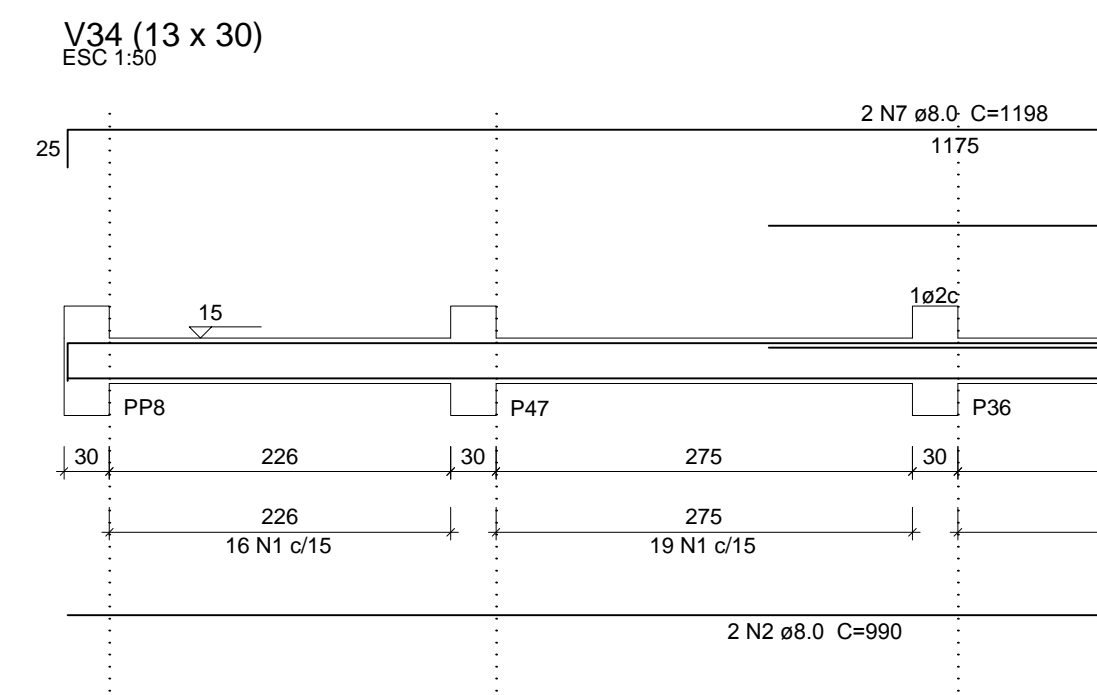
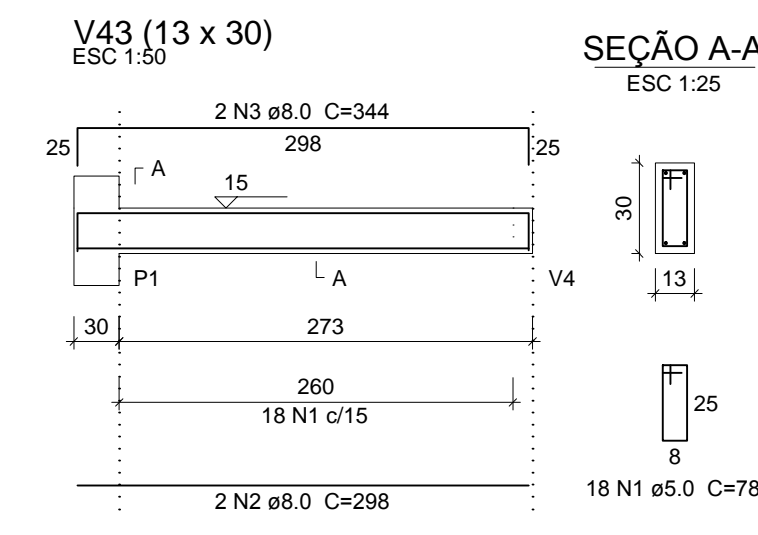
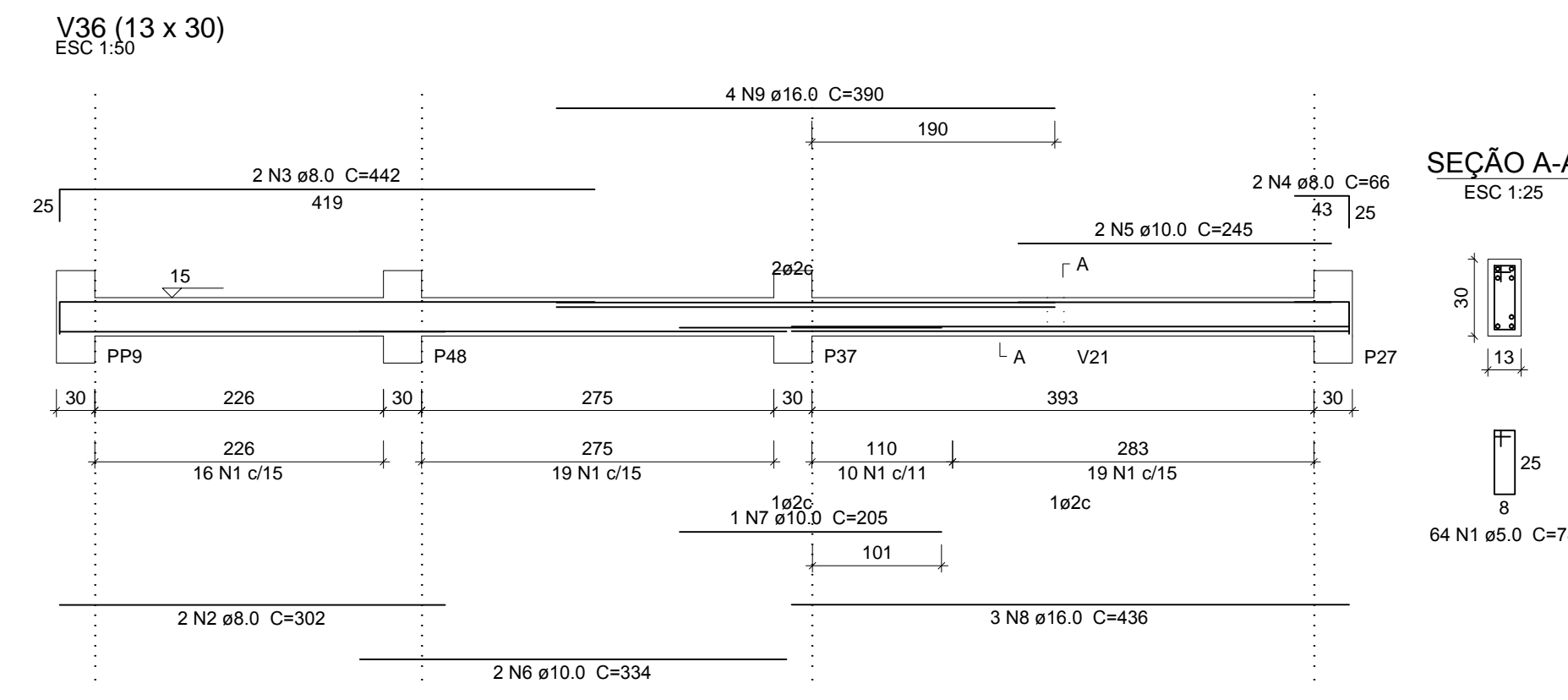
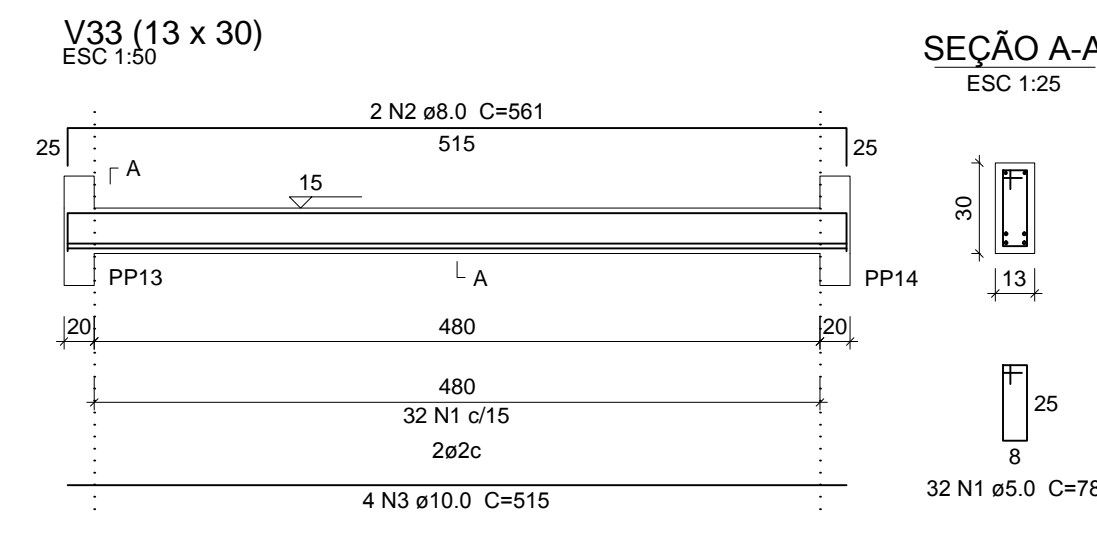
Relação do aço

ELEMENTO	AÇO	N	DIAM (mm)	QUANT	C.UNIT (cm)	C.TOTAL (cm)
V33	CA60	1	5.0	32	78	2496
	CA50	2	8.0	2	561	1122
	CA50	3	10.0	4	515	2060
V34	CA60	1	5.0	151	78	11778
	CA50	2	8.0	2	990	1980
	CA50	3	8.0	2	1010	2020
	CA50	4	8.0	2	398	796
	CA50	5	8.0	1	618	618
	CA50	6	8.0	1	290	290
	CA50	7	8.0	2	1188	2376
	CA50	8	8.0	2	1184	2368
	CA50	9	8.0	2	197	394
V36	CA60	1	5.0	64	78	4992
	CA50	2	8.0	2	302	604
	CA50	3	8.0	2	442	884
	CA50	4	8.0	2	66	132
	CA50	5	10.0	2	245	490
	CA50	6	10.0	2	334	668
	CA50	7	10.0	1	205	205
	CA50	8	16.0	3	436	1308
	CA50	9	16.0	4	390	1560
V37	CA60	1	5.0	75	78	5850
	CA50	2	8.0	2	797	1594
	CA50	3	8.0	2	398	796
	CA50	4	8.0	1	725	725
	CA50	5	8.0	2	1112	2224
	CA50	6	8.0	2	197	394
V39	CA60	1	5.0	82	78	6396
	CA50	2	8.0	2	1009	2018
	CA50	3	8.0	2	295	590
	CA50	4	8.0	2	1055	2110
V40	CA60	1	5.0	75	78	5850
	CA50	2	8.0	2	797	1594
	CA50	3	8.0	2	398	796
	CA50	4	8.0	1	725	725
	CA50	5	8.0	2	1112	2224
V41	CA60	1	5.0	63	78	4914
	CA50	2	8.0	1	174	174
	CA50	3	8.0	1	505	505
	CA50	4	8.0	2	1039	2078
	CA50	5	8.0	3	375	1125
V43	CA60	1	5.0	18	78	1404
	CA50	2	8.0	2	298	596
	CA50	3	8.0	2	344	688
V44	CA60	1	5.0	21	78	1638
	CA50	2	8.0	3	344	1032
	CA50	3	10.0	2	389	778
V45	CA60	1	5.0	31	78	2418
	CA50	2	8.0	2	553	1106
	CA50	3	12.5	2	507	1014
V47	CA60	1	5.0	21	78	1638
	CA50	2	8.0	3	344	1032
	CA50	3	10.0	2	389	778
V48	CA60	1	5.0	31	78	2418
	CA50	2	8.0	2	553	1106
	CA50	3	10.0	3	507	1521

Resumo do aço

AÇO	DIAM (mm)	C.TOTAL (m)	PESO (kg)
CA50	8.0	412.8	162.9
	10.0	65	40.1
	12.5	10.2	9.8
	16.0	28.7	45.3
CA60	5.0	502.4	77.4
PESO TOTAL (kg)			
CA50			258
CA60			77.4

Volume de concreto (C-30) = 4.07 m³  
Área de forma = 76.25 m²



5  
4  
3  
2  
1

REVISÕES

PROPRIETÁRIO: Prefeitura Municipal de Macaíba

OBRA: Complexo Esportivo de Macaíba

ENDEREÇO: Rua José Coelho, Vila Olímpica-Macaíba/RN

AUTOR DO PROJETO: Engº Manoel Beneditos Filho

PROPRIETÁRIO: Prefeitura de Macaíba

AUTOR DO PROJETO: Manoel Beneditos Filho CREA: 21009426/3

**EMPROTEC**  
ENGENHARIA  
PROJETANDO O FUTURO  
EMPRESA DE PROJETOS TÉCNICOS E  
CONSTRUÇÃO CIVIL LTDA  
CNPJ: 16.860.880/0001-10  
AVENIDA JOSÉ FERREIRA DE MEDEIROS, 188, 3 A 1  
SANTA CRUZ/RN - CEP: 59.200-000  
TEL: (94) 3291-2220/345-1735  
E-MAIL: emproteceengenharia@gmail.com

PREFEITURA MUNICIPAL DE MACAÍBA

SECRETARIA MUNICIPAL DE INFRAESTRUTURA

Setor de Engenharia  
Rua Dr. Pires Maciel, 310, Centro-Macaíba/RN - CEP: 59280-000

Projeto Estrutural com Fundações

DERECHO: Beneditos

ÁREA: 733,86 m²

ESCALA: Indicada

DATA: Jan / 2019

EST 9/15