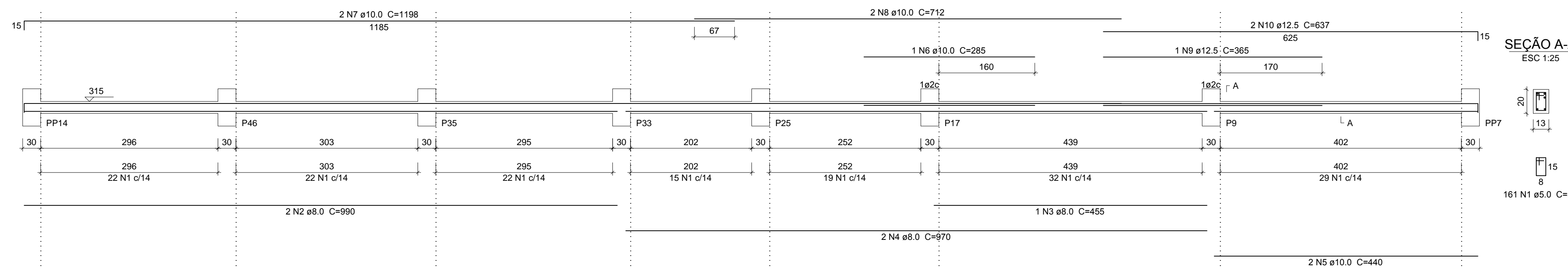


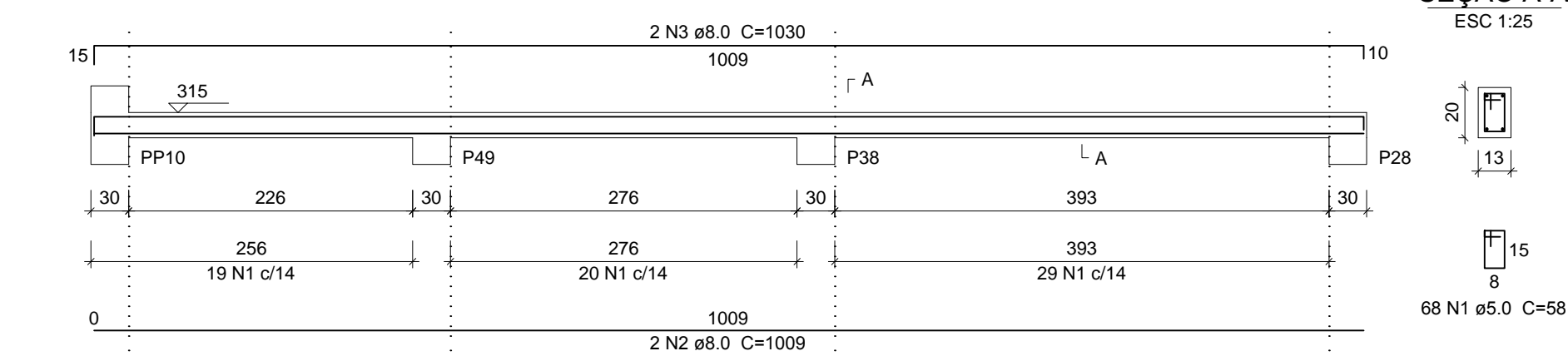
NOTAS GERAIS

- 1- DIMENSÕES E ELEVAÇÕES EM CENTÍMETRO
- 2- TAXA ADMISSÍVEL DO TERRENO 1.0kg/cm² (Estimada)

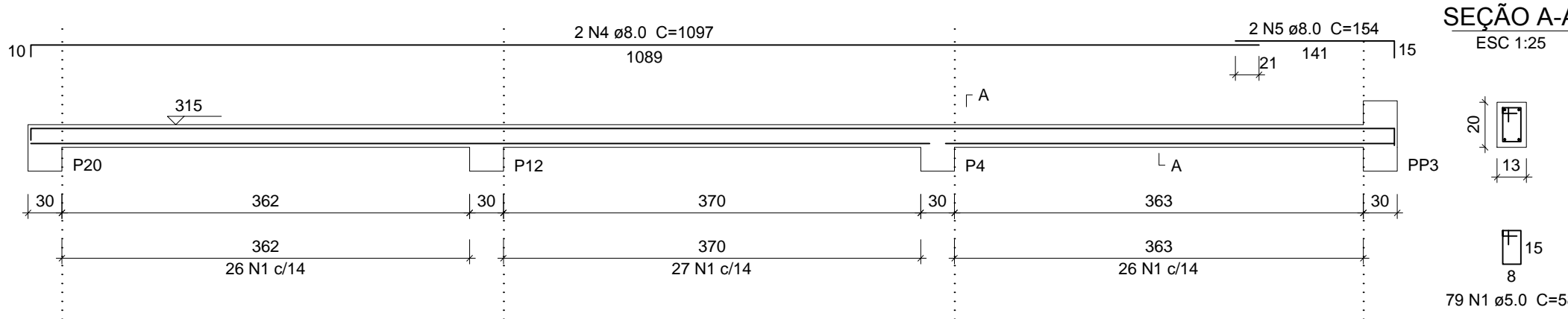
V66 (13 x 20)
ESC 1:50



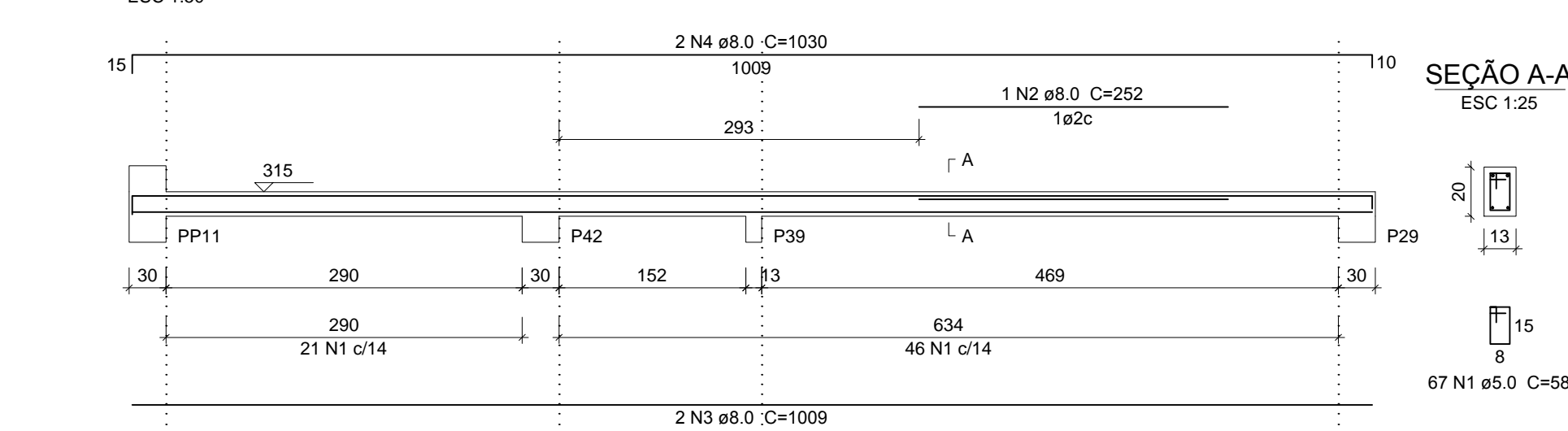
V52 (13 x 20)
ESC 1:50



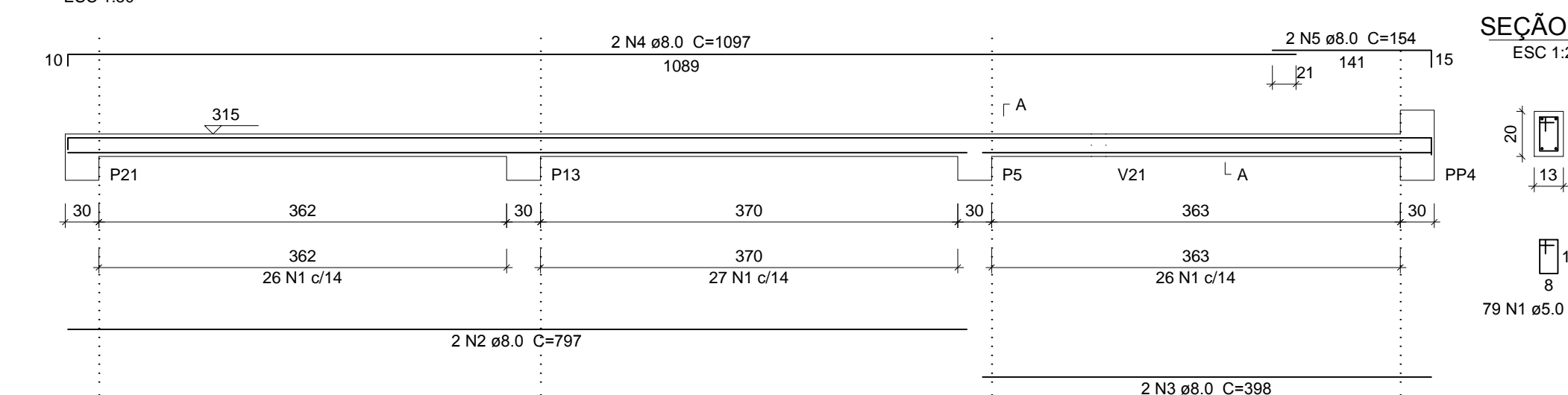
V53 (13 x 20)
ESC 1:50



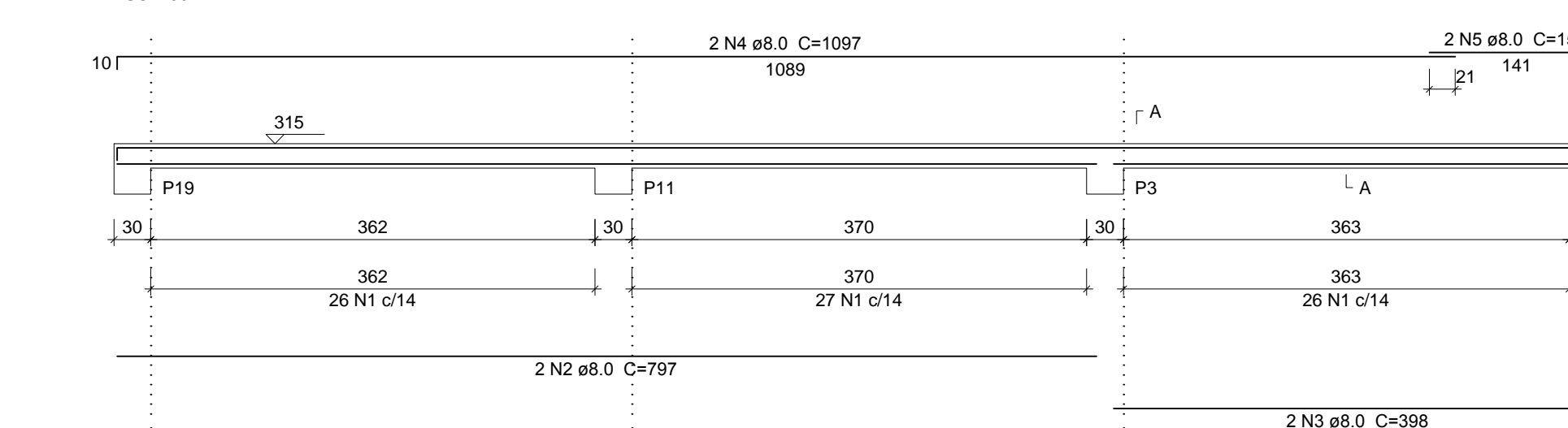
V54 (13 x 20)
ESC 1:50



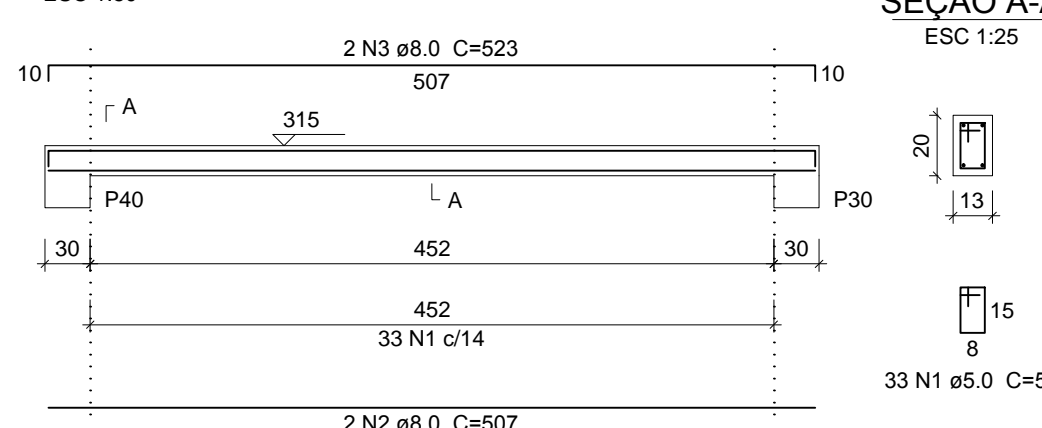
V55 (13 x 20)
ESC 1:50



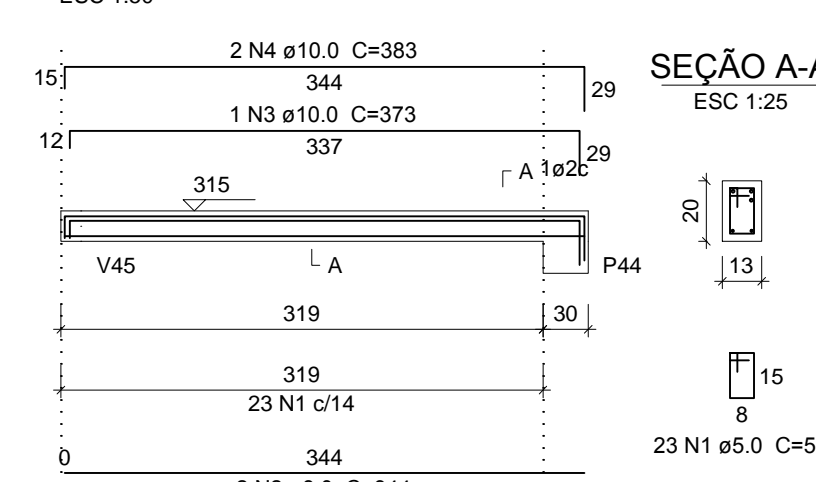
V50 (13 x 20)
ESC 1:50



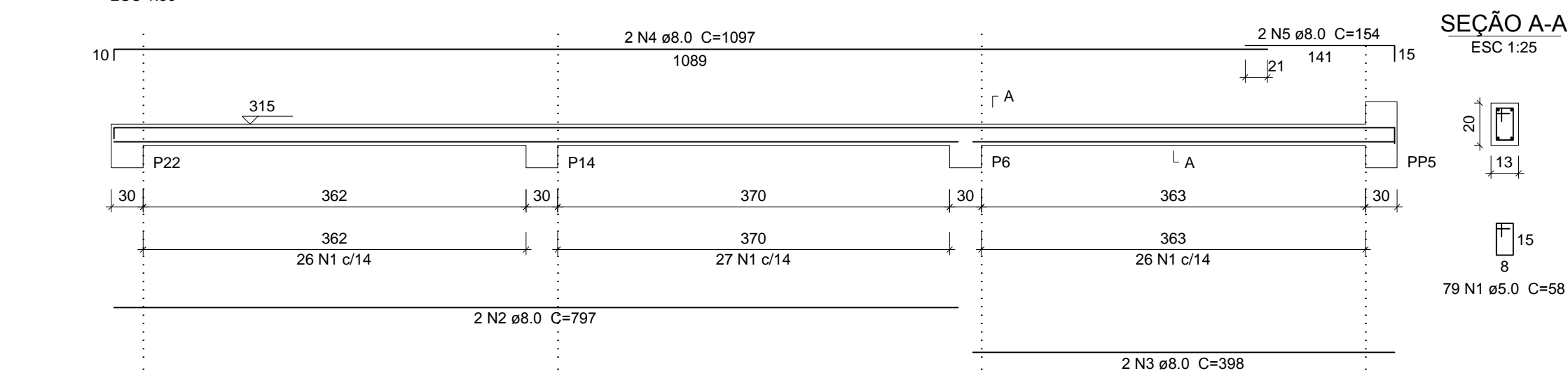
V58 (13 x 20)
ESC 1:50



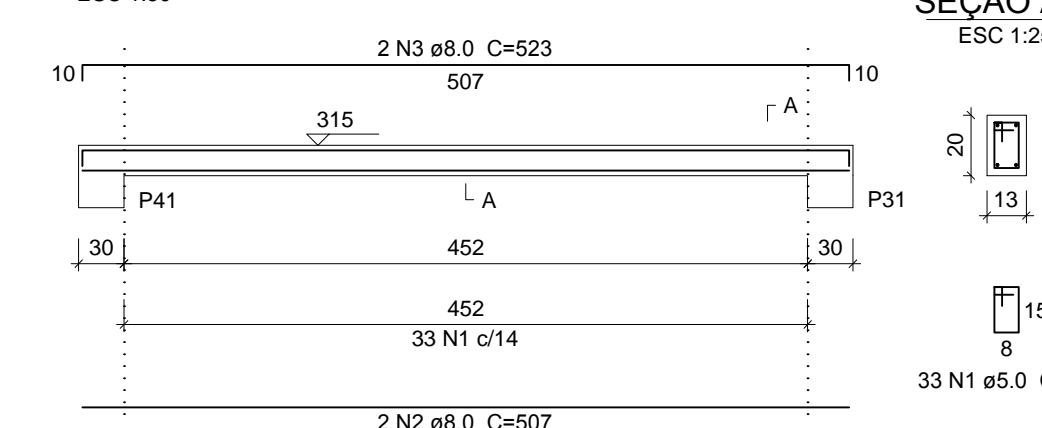
V60 (13 x 20)
ESC 1:50



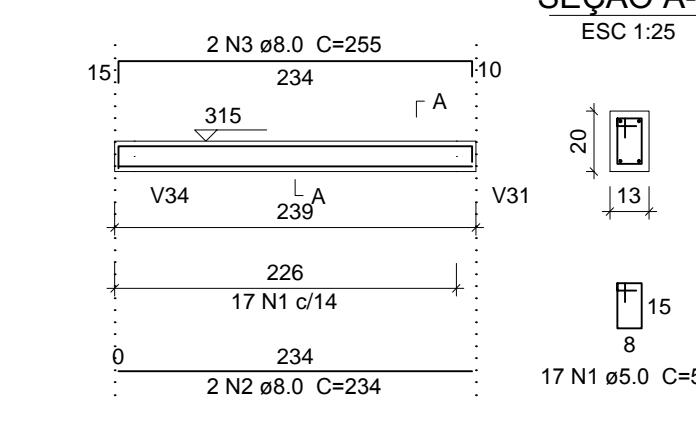
V59 (13 x 20)
ESC 1:50



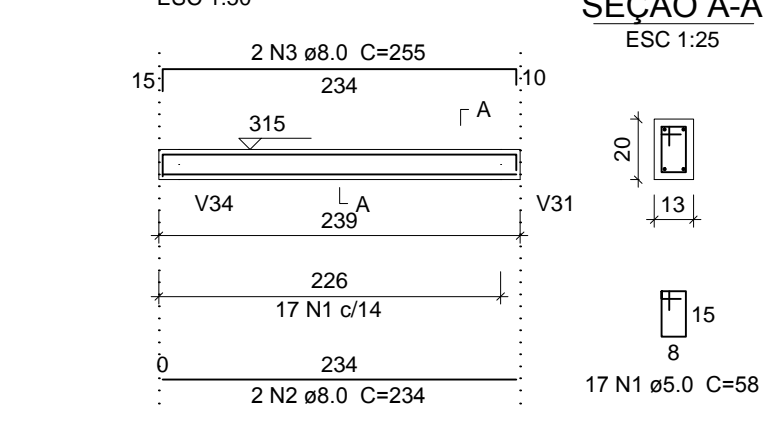
V61 (13 x 20)
ESC 1:50



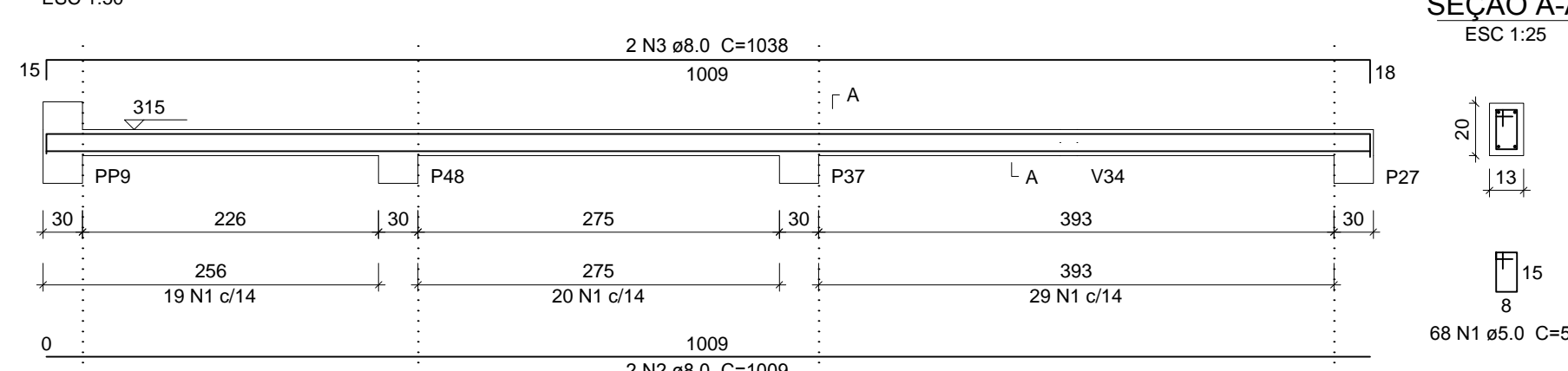
V51 (13 x 20)
ESC 1:50



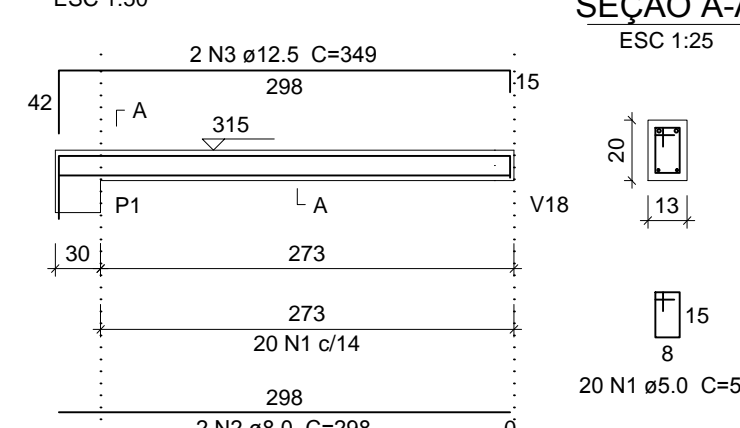
V48 (13 x 20)
ESC 1:50



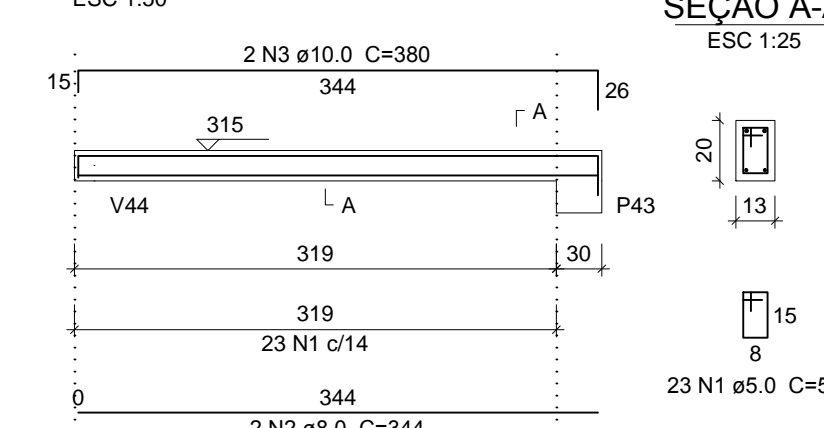
V49 (13 x 20)
ESC 1:50



V56 (13 x 20)
ESC 1:50



V57 (13 x 20)
ESC 1:50



Relação do aço

ELEMENTO	AÇO	N	DIAM (mm)	QUANT	C.UNIT (cm)	C.TOTAL (cm)
V48	CA60	1	5.0	17	58	986
	CA50	2	8.0	2	234	468
	CA50	3	8.0	2	255	510
V49	CA60	1	5.0	68	58	3844
	CA50	2	8.0	2	1009	2018
	CA50	3	8.0	2	1038	2076
V50	CA60	1	5.0	79	58	4582
	CA50	2	8.0	2	797	1594
	CA50	3	8.0	2	996	796
	CA50	4	8.0	2	1097	2194
V51	CA60	1	5.0	17	58	986
	CA50	2	8.0	2	234	468
	CA50	3	8.0	2	255	510
V52	CA60	1	5.0	68	58	3844
	CA50	2	8.0	2	1009	2018
	CA50	3	8.0	2	1030	2060
V53	CA60	1	5.0	79	58	4582
	CA50	2	8.0	2	797	1594
	CA50	3	8.0	2	996	796
	CA50	4	8.0	2	1097	2194
V54	CA60	1	5.0	67	58	3886
	CA50	2	8.0	1	252	252
	CA50	3	8.0	2	1009	2018
	CA50	4	8.0	2	1030	2060
V55	CA60	1	5.0	79	58	4582
	CA50	2	8.0	2	797	1594
	CA50	3	8.0	2	996	796
	CA50	4	8.0	2	1097	2194
V56	CA60	1	5.0	20	58	1160
	CA50	2	8.0	2	797	1594
	CA50	3	12.5	2	349	698
V57	CA60	1	5.0	23	58	1334
	CA50	2	8.0	2	344	688
	CA50	3	10.0	2	380	760
V58	CA60	1	5.0	33	58	1914
	CA50	2	8.0	2	507	1014
	CA50	3	8.0	2	523	1046
V59	CA60	1	5.0	79	58	4582
	CA50	2	8.0	2	797	1594
	CA50	3	8.0	2	996	796
	CA50	4	8.0	2	1097	2194
V60	CA60	1	5.0	23	58	1334
	CA50	2	8.0	2	344	688
	CA50	3	10.0	1	373	373
	CA50	4	10.0	2	383	766
V61	CA60	1	5.0	33	58	1914
	CA50	2	8.0	2	507	1014
	CA50	3	8.0	2	523	1046
V66	CA60	1	5.0	161	58	9338
	CA50	2	8.0	2	990	1980
	CA50	3	8.0	1	455	455
	CA50	4	8.0	2	970	1940
	CA50	5	10.0	2	440	880
	CA50	6	10.0	1	285	285
	CA50	7	10.0	2	1198	2396
	CA50	8	10.0	2	712	1424
	CA50	9	12.5	1	365	365
	CA50	10	12.5	2	637	1274

Resumo do aço

AÇO	DIAM (mm)	C.TOTAL (m)	PESO (kg)
CA50	8.0	445	175.6
	10.0	68.2	42.4
	12.5	23.4	22.5
CA60	5.0	490.7	75.6
PESO TOTAL (kg)			
CA50	240.5		
CA60	75.6		

Volume de concreto (C-30) = 3.34 m³
Área de forma = 68.01 m²

REVISÕES	DATA	VISTO
5		
4		
3		
2		
1		

PROPRIETÁRIO: Prefeitura Municipal de Macaíba
OBRA: Complexo Esportivo de Macaíba
ENDEREÇO: Rua José Coelho, Vila Olímpica-Macaíba/RN
AUTOR DO PROJETO: Eng^o Manoel Beneditos Filho

PROPRIETÁRIO: Prefeitura de Macaíba
AUTOR DO PROJETO: Manoel Beneditos Filho CREA: 2100942603



PREFEITURA MUNICIPAL DE MACAÍBA
SECRETARIA MUNICIPAL DE INFRAESTRUTURA
Setor de Engenharia
Rua Dr. Floriano Medeiros, 310, Centro-Macaíba/RN - CEP: 58280-000
Projeto Estrutural com Fundações

DERSENHO: Beneditos
ÁREA: 733.86 m²
ESCALA: Indicação
DATA: Jan / 2019