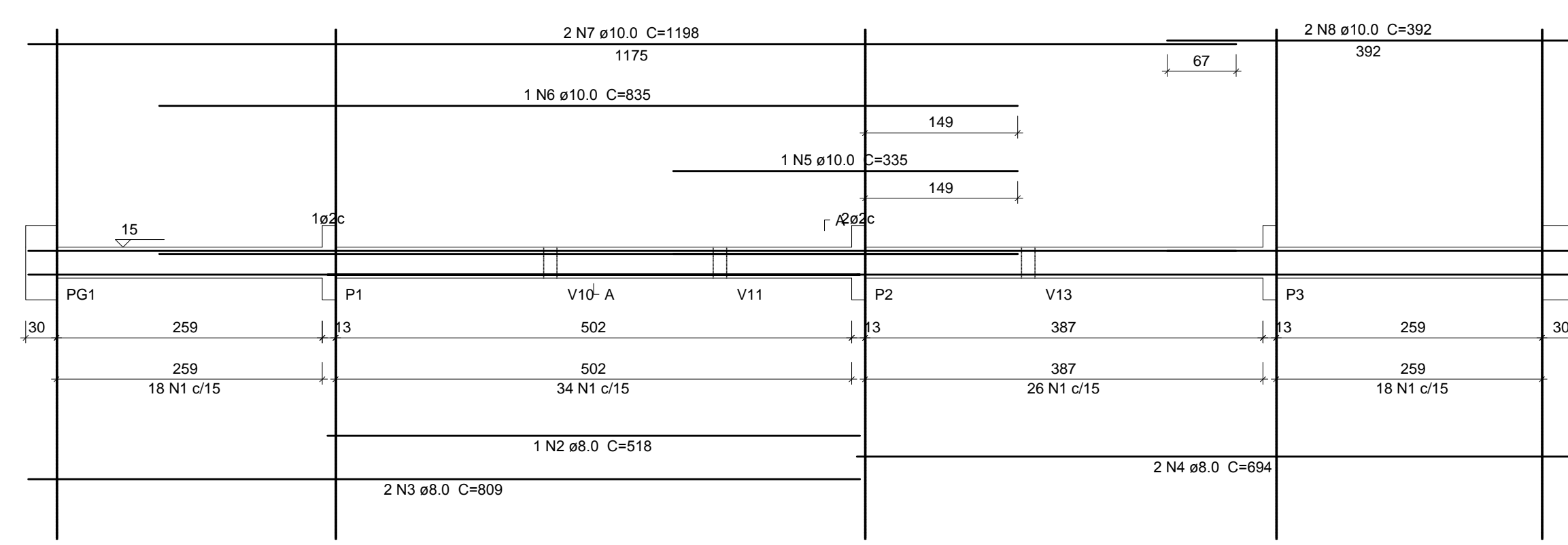
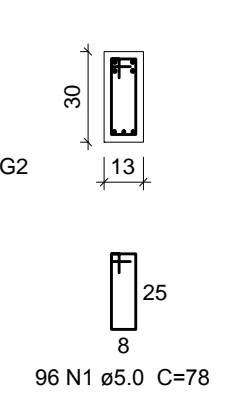


NOTAS GERAIS

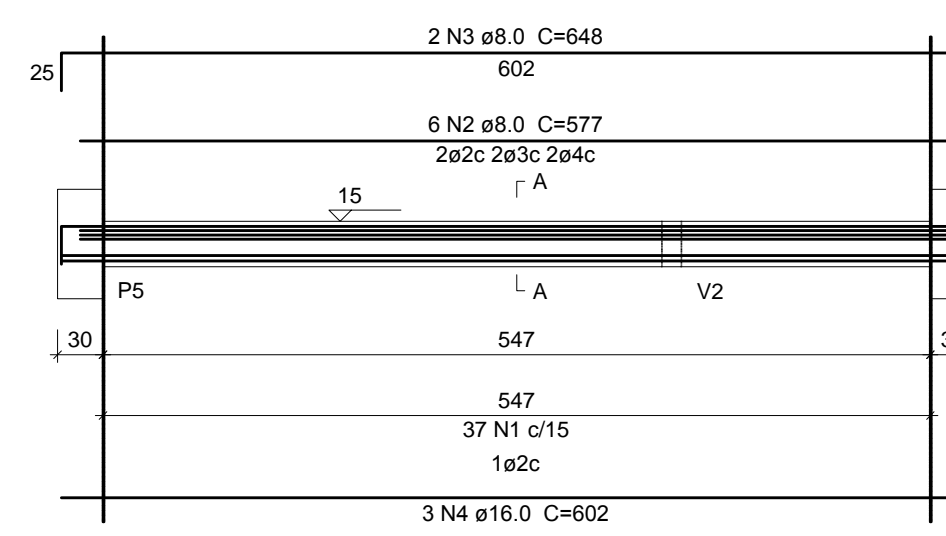
V1 (13 x 30)
ESC 1:50



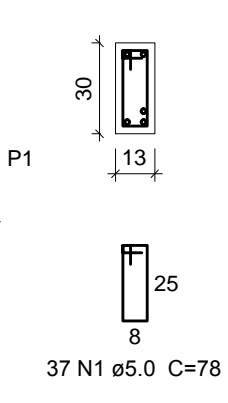
SEÇÃO A-A
ESC 1:25



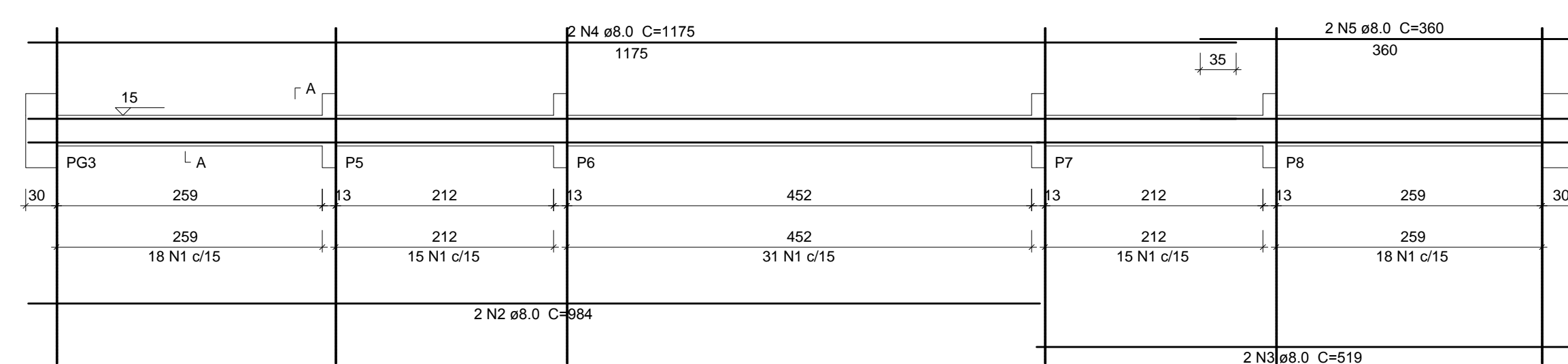
V9 (13 x 30)
ESC 1:50



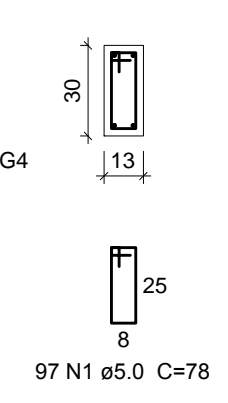
SEÇÃO A-A
ESC 1:25



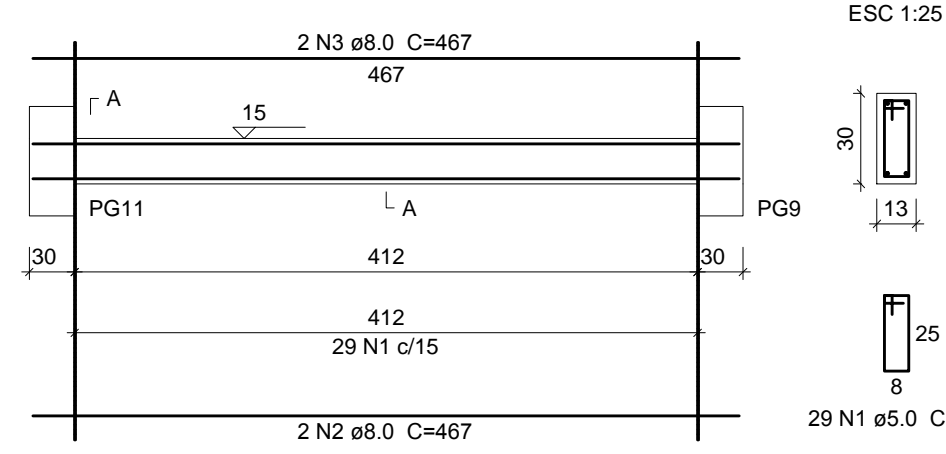
V3 (13 x 30)
ESC 1:50



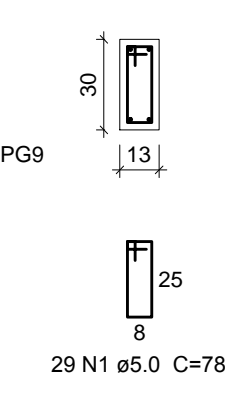
SEÇÃO A-A
ESC 1:25



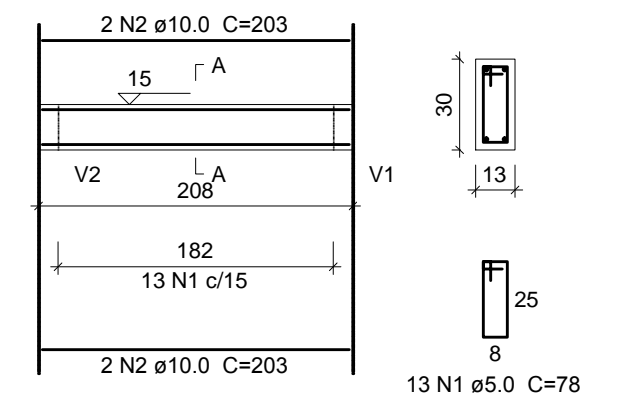
V5 (13 x 30)
ESC 1:50



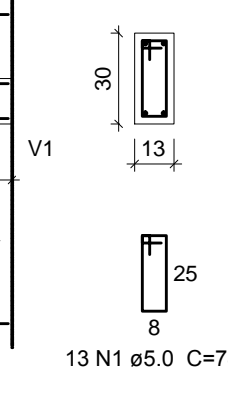
SEÇÃO A-A
ESC 1:25



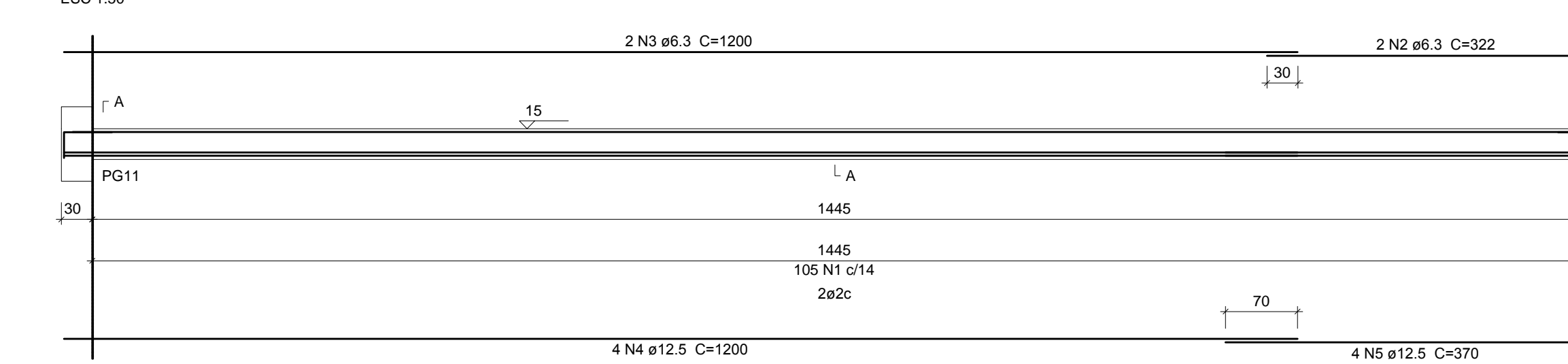
V10 (13 x 30)
ESC 1:50



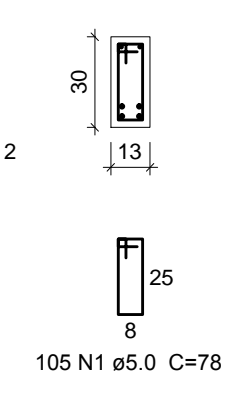
SEÇÃO A-A
ESC 1:25



V4 (13 x 30)
ESC 1:50



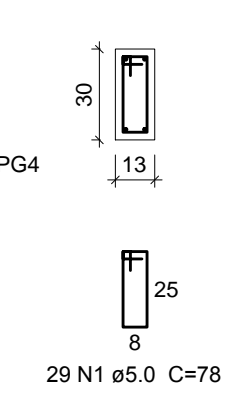
SEÇÃO A-A
ESC 1:25



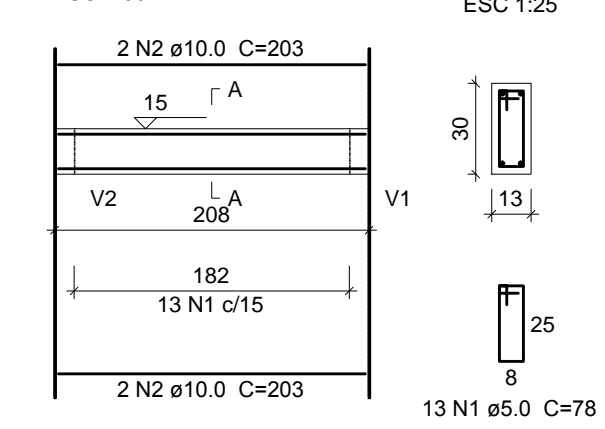
V18 (13 x 30)
ESC 1:50



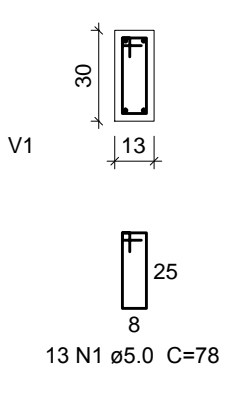
SEÇÃO A-A
ESC 1:25



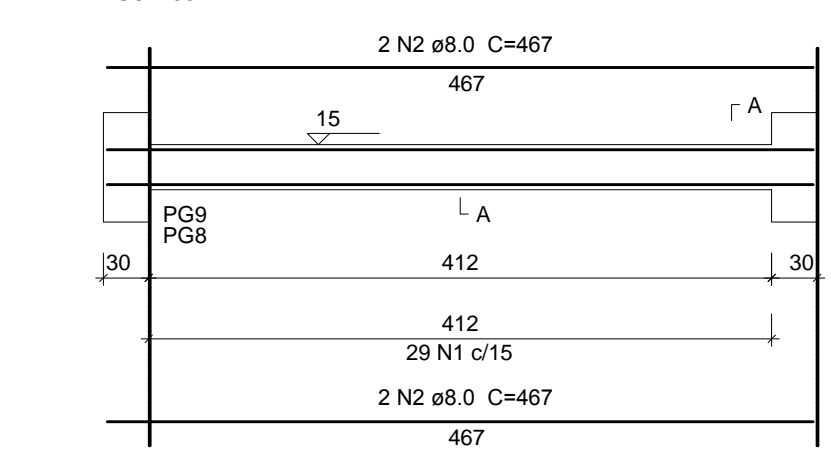
V11 (13 x 30)
ESC 1:50



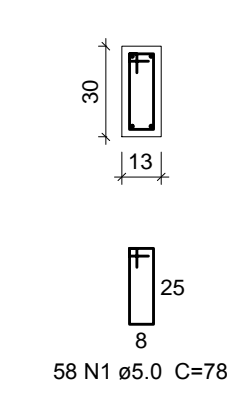
SEÇÃO A-A
ESC 1:25



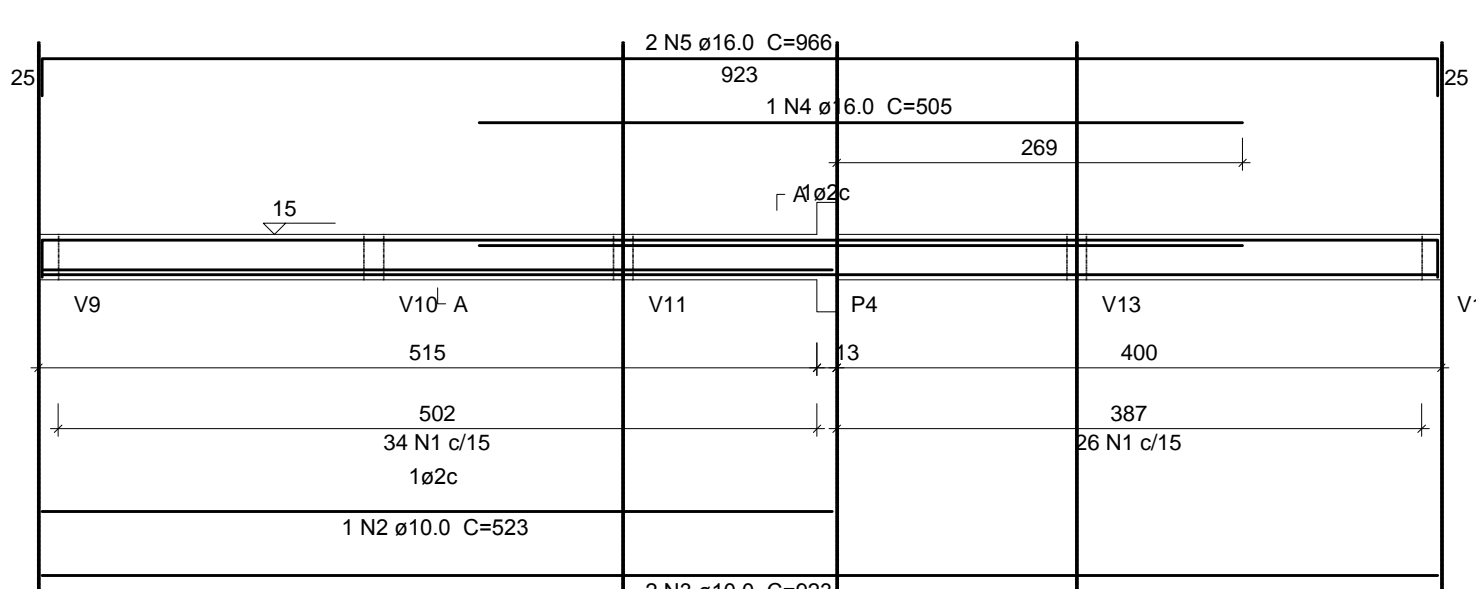
V6=V6A (13 x 30)
ESC 1:50



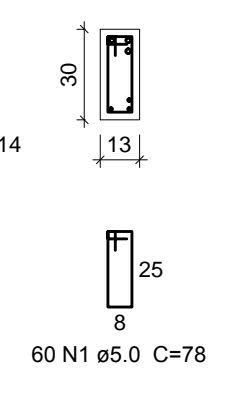
SEÇÃO A-A
ESC 1:25



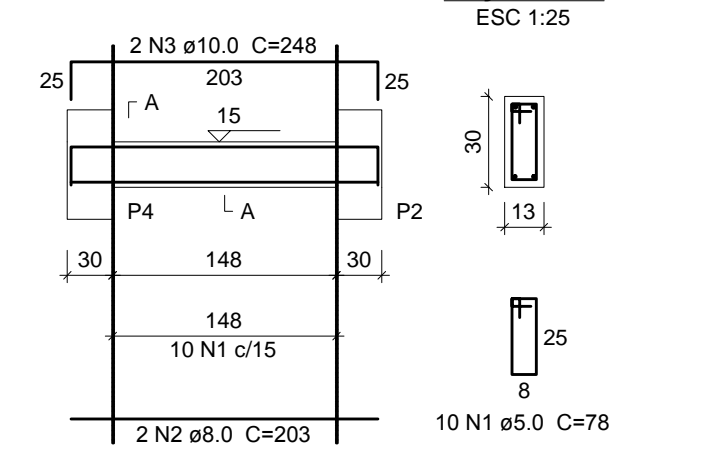
V2 (13 x 30)
ESC 1:50



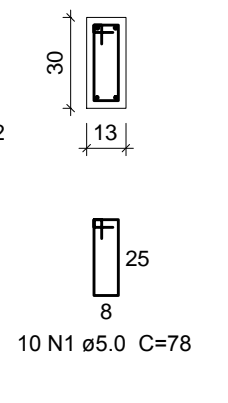
SEÇÃO A-A
ESC 1:25



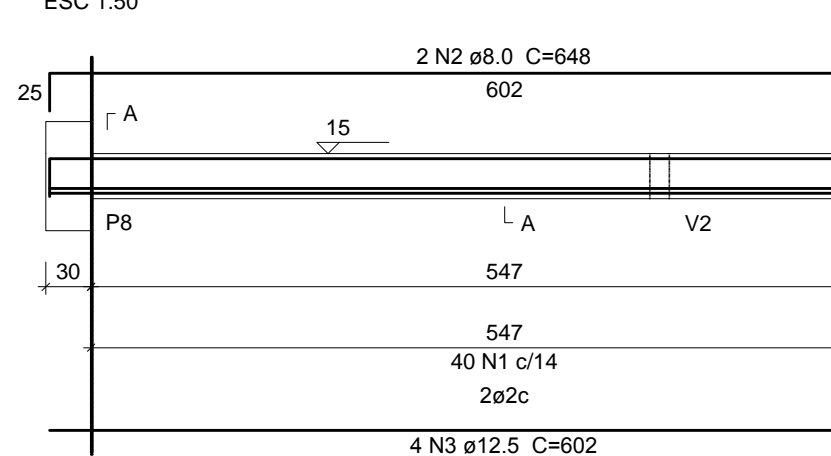
V12 (13 x 30)
ESC 1:50



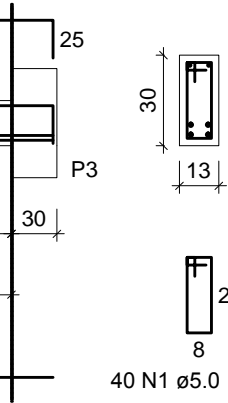
SEÇÃO A-A
ESC 1:25



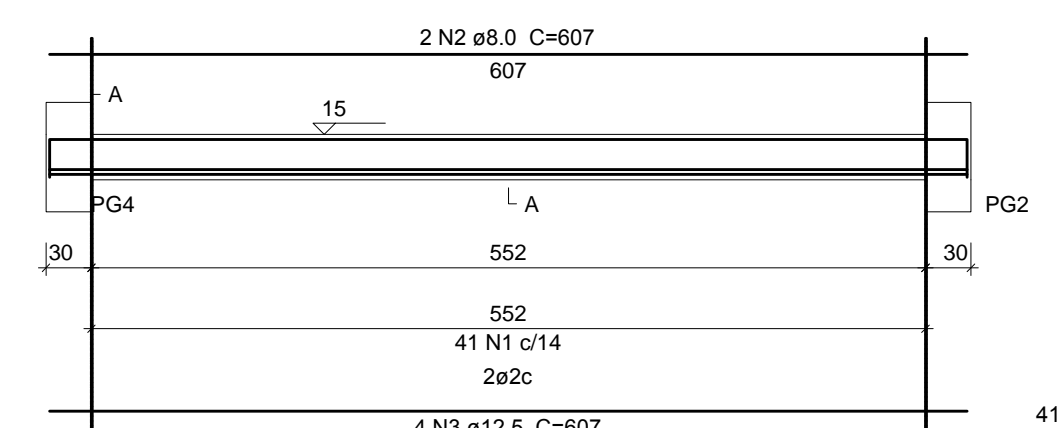
V14 (13 x 30)
ESC 1:50



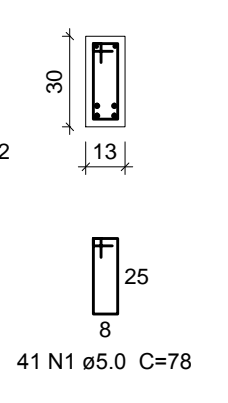
SEÇÃO A-A
ESC 1:25



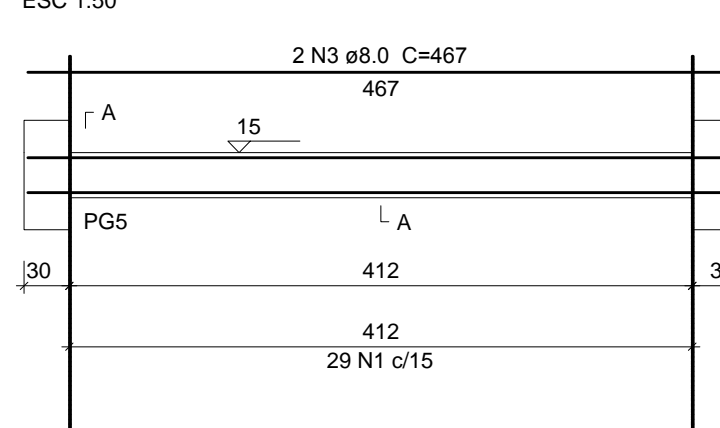
V19 (13 x 30)
ESC 1:50



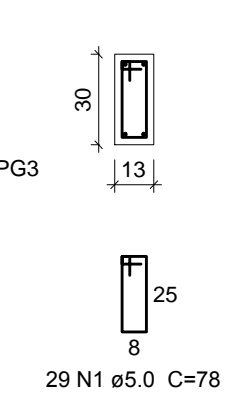
SEÇÃO A-A
ESC 1:25



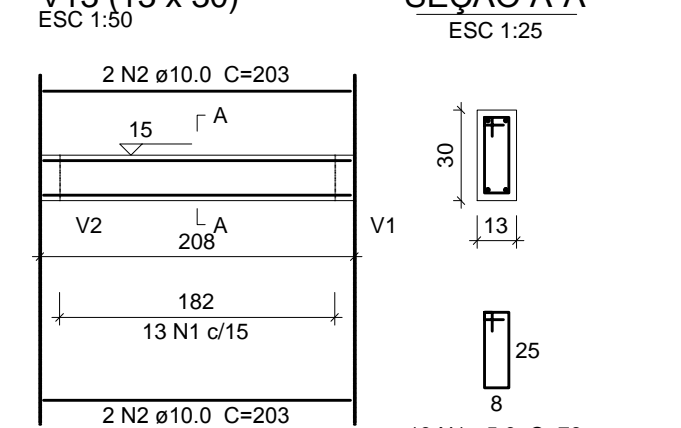
V7 (13 x 30)
ESC 1:50



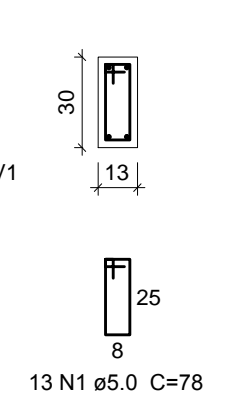
SEÇÃO A-A
ESC 1:25



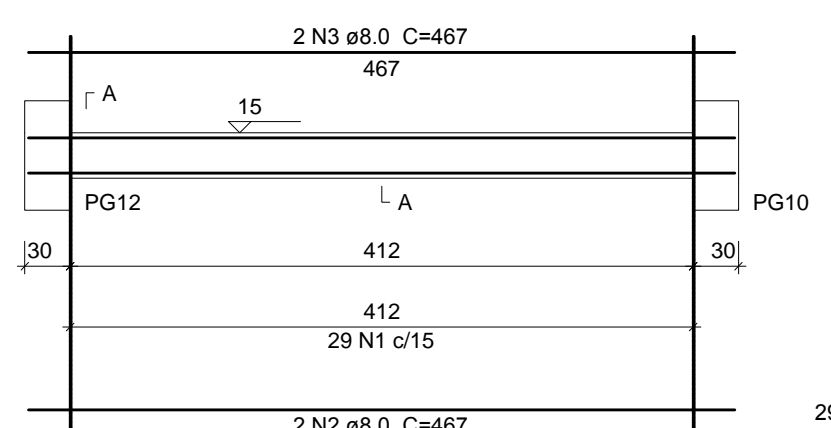
V13 (13 x 30)
ESC 1:50



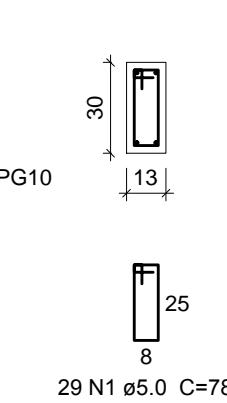
SEÇÃO A-A
ESC 1:25



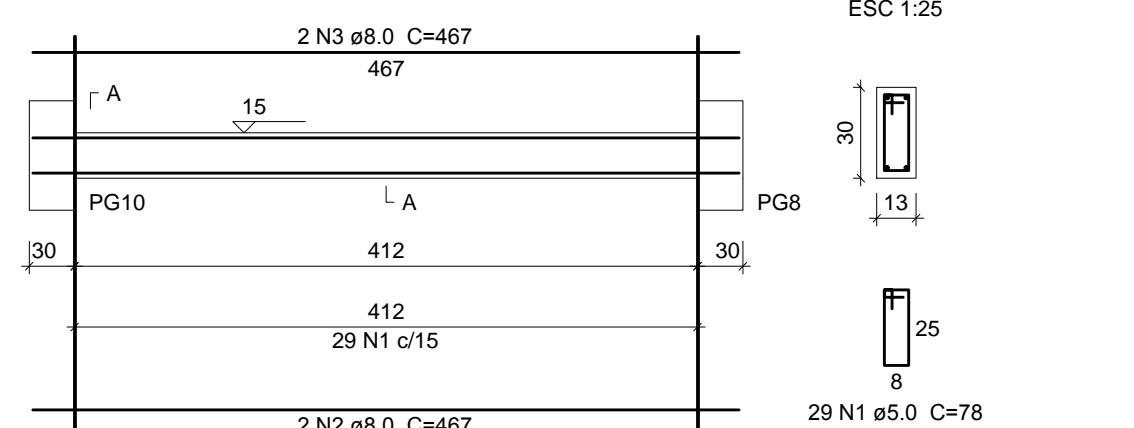
V15 (13 x 30)
ESC 1:50



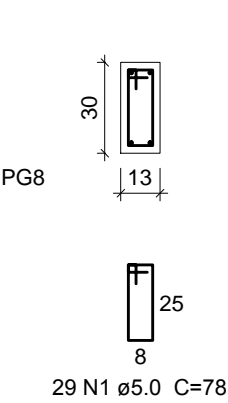
SEÇÃO A-A
ESC 1:25



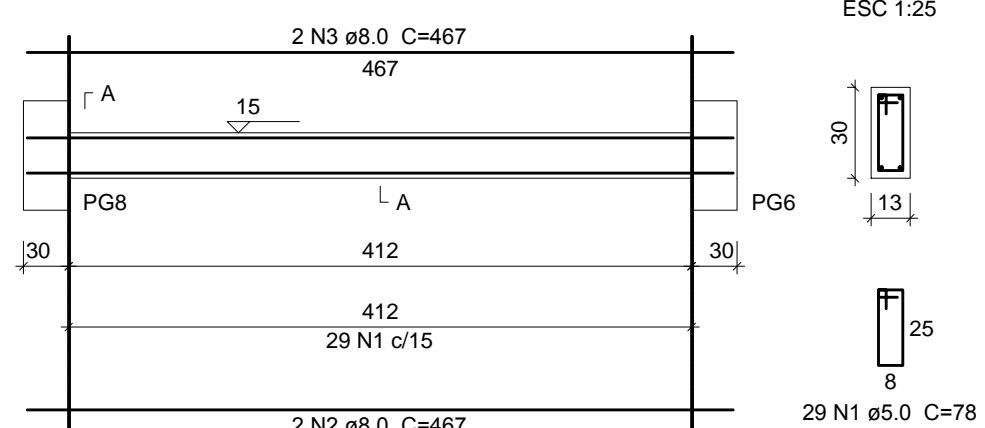
V16 (13 x 30)
ESC 1:50



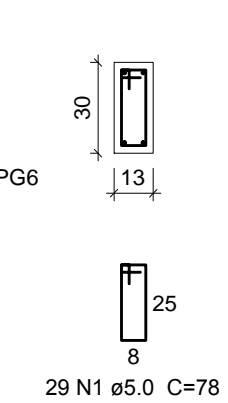
SEÇÃO A-A
ESC 1:25



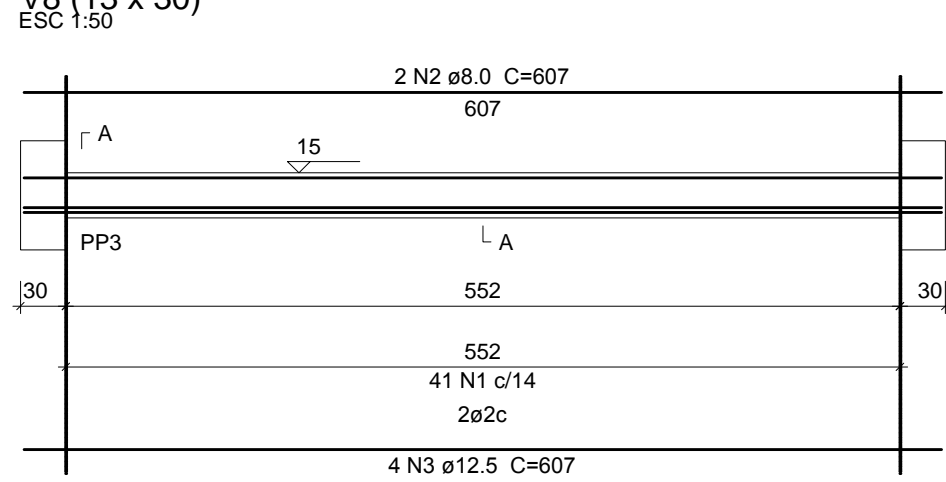
V17 (13 x 30)
ESC 1:50



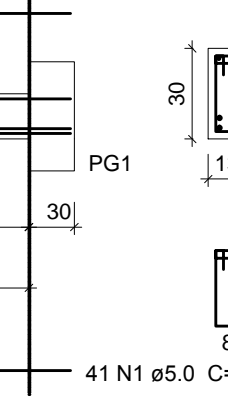
SEÇÃO A-A
ESC 1:25



V8 (13 x 30)
ESC 1:50



SEÇÃO A-A
ESC 1:25



Relação do aço						
ELEMENTO	AÇO	N	DIAM (mm)	QUANT	C.UNIT (cm)	C.TOTAL (cm)
V1	CA60	1	5.0	96	78	7488
	CA50	2	8.0	1	518	518
	CA50	3	8.0	2	809	1618
	CA50	4	8.0	2	694	1388
	CA50	5	10.0	1	335	335
	CA50	6	10.0	1	835	835
V2	CA50	7	10.0	2	1175	2350
	CA50	8	10.0	2	392	784
	CA50	1	5.0	60	78	4680
	CA50	2	10.0	1	523	523
	CA50	3	10.0	2	923	1846
	CA50	4	16.0	1	505	505
V3	CA50	5	16.0	2	966	1932
	CA60	1	5.0	97	78	7566
	CA50	2	8.0	2	984	1968
	CA50	3	8.0	2	519	1038
	CA50	4	8.0	2	1175	2350
	CA50	5	8.0	2	358	716
V4	CA60	1	5.0	105	78	8190
	CA50	2	8.0	2	331	662
	CA50	3	6.3	2	1200	2400
	CA50	4	12.5	4	1200	4800
	CA50	5	12.5	4	370	1480
	CA60	1	5.0	29	78	2262
V5	CA50	2	8.0	2	467	934
	CA50	3	8.0	2	467	934
	CA60	1	5.0	58	78	4524
	CA50	2	8.0	4	467	1868
	CA50	3	8.0	4	467	1868
	CA50	1	5.0	29	78	2262
V6	CA50	2	8.0	2	467	934
	CA50	3	8.0	2	467	934
	CA60	1	5.0	41	78	3198
	CA50	2	8.0	2	607	1214
	CA50	3	12.5	4	607	2428
	CA60	1	5.0	37	78	2886
V7	CA50	2	8.0	6	577	3462
	CA50	3	8.0	2	648	1296
	CA50	4	16.0	3	602	1806
	CA50	1	5.0	13	78	1014
	CA50	2	10.0	4	203	812
	CA60	1	5.0	13	78	1014
V8	CA50	2	10.0	4	203	812
	CA60	1	5.0	40	78	3120
	CA50	2	8.0	2	648	1296
	CA50	3	12.5	4	602	2408
	CA60	1	5.0	29	78	2262
	CA50	2	8.0	2	467	934
V9	CA50	3	8.0	2	467	934
	CA60	1	5.0	29	78	2262
	CA50	2	8.0	2	467	934
	CA50	3	8.0	2	467	934
	CA60	1	5.0	29	78	2262
	CA50	2	8.0	2	467	934
V10	CA50	3	8.0	2	467	934
	CA60	1	5.0	29	78	2262
	CA50	2	8.0	2	467	934
	CA50	3	8.0	2	467	934
	CA60	1	5.0	41	78	3198
	CA50	2	8.0	2	607	1214
V11	CA50	3	8.0	2	467	934
	CA60	1	5.0	29	78	2262
	CA50	2	8.0	2	467	934
	CA50	3	8.0	2	467	934
	CA60	1	5.0	29	78	2262
	CA50	2	8.0	2	467	934
V12	CA50	3	8.0	2	467	934
	CA60	1	5.0	29	78	2262
	CA50	2	8.0	2	467	934
	CA50	3	8.0	2	467	934
	CA60	1	5.0	41	78	3198
	CA50	2	8.0	2	607	1214
V13	CA50	3	12.5	4	607	2428
	CA50	2	8.0	2	467	934
	CA50	3	12.5	4	607	2428
	CA50	2	8.0	2	467	934
	CA50	3	12.5	4	607	2428
	CA50	2	8.0	2	467	934

1 - DIMENSÕES E ELEVAÇÕES EM CENTÍMETRO
2 - TAXA ADMISSÍVEL DO TERRENO 1.0kg/cm² (Estimada)

Resumo do aço

AÇO	DIAM (mm)	C.TOTAL (m)	PESO (kg)
CA50	6.3	30.0	7.5
CA50	8.0	336.0	132.5
CA50	10.0	86.0	59.1
CA50	12.5	135.5	130.5
CA50	16.0	42.5	67.0
CA60	5.0	622.5	95.9
PESO TOTAL (kg)			
CA50		395.6	
CA60		95.9	
Volume de concreto (C-30) = 4.86 m³			
Área de forma = 91.03 m²			

5
4
3
2
1
REVISÃO 01
08/07/2020
BENEVIDES

PROPRIETÁRIO:	Prefeitura Municipal de Macaíba - Secretaria de Infraestrutura
OBJETIVO:	Vila Olímpica de Macaíba
ENDEREÇO:	Rua José Coelho, Vila Olímpica - Macaíba/RN
AUTOR DO PROJETO:	Raphaela Thais Oliveira Costa
PROPRIETÁRIO:	Prefeitura Municipal de Macaíba - Secretaria de Infraestrutura
AUTOR DO PROJETO:	Raphaela Thais Oliveira Costa
CREA:	2100674013

EMPRESA DE PROJETOS TÉCNICOS E CONSTRUÇÃO CIVIL LTDA
CNPJ: 14.645.888/0001-11
AVENIDA JOSÉ FERREIRA DE MEDEIROS, 188, 3 A.1
SANTA CRUZ/RN - CEP: 59.200-000
TEL: (84) 3041.2225/3445.1775
E-MAIL: empromtec@gmail.com

PREFEITURA MUNICIPAL DE MACAÍBA	
SECRETARIA MUNICIPAL DE INFRAESTRUTURA	
Setor de Engenharia	
Rua Dr. Pedro Manoel, 315, Centro/Macaíba/RN - CEP: 59300-000	
Projetos Complementares	
DESENHO: Benevides	EST: 6/18
CONTEÚDO: Relatório Detalhes da Viga de Fundação	ÁREA: 964.21 m²
ESCALA: Indefinida	DATA: Jan / 2019