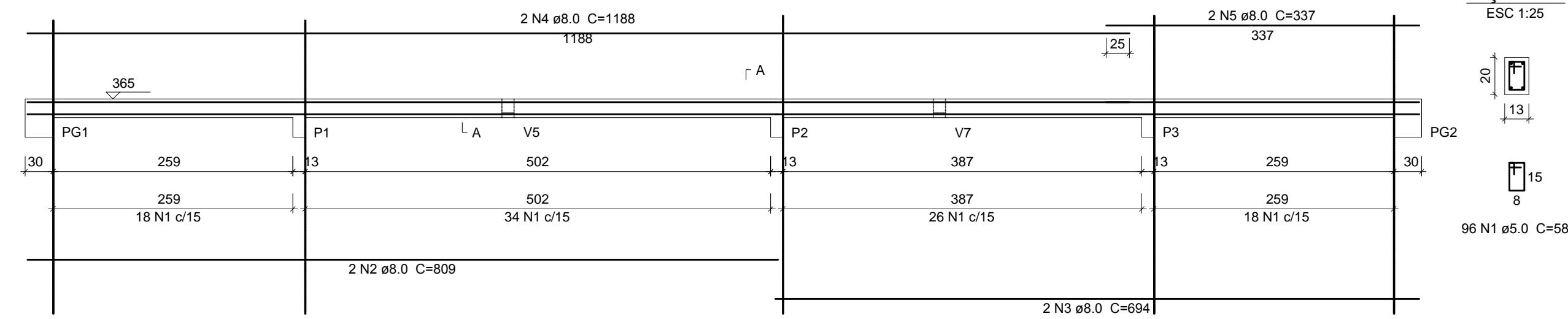


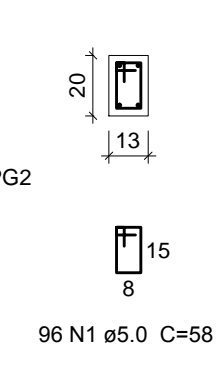
NOTAS GERAIS

- 1 - DIMENSÕES E ELEVACÕES EM CENTÍMETRO
- 2 - TAXA ADMISSÍVEL DO TERRENO 1,0kg/cm² (Estimada)

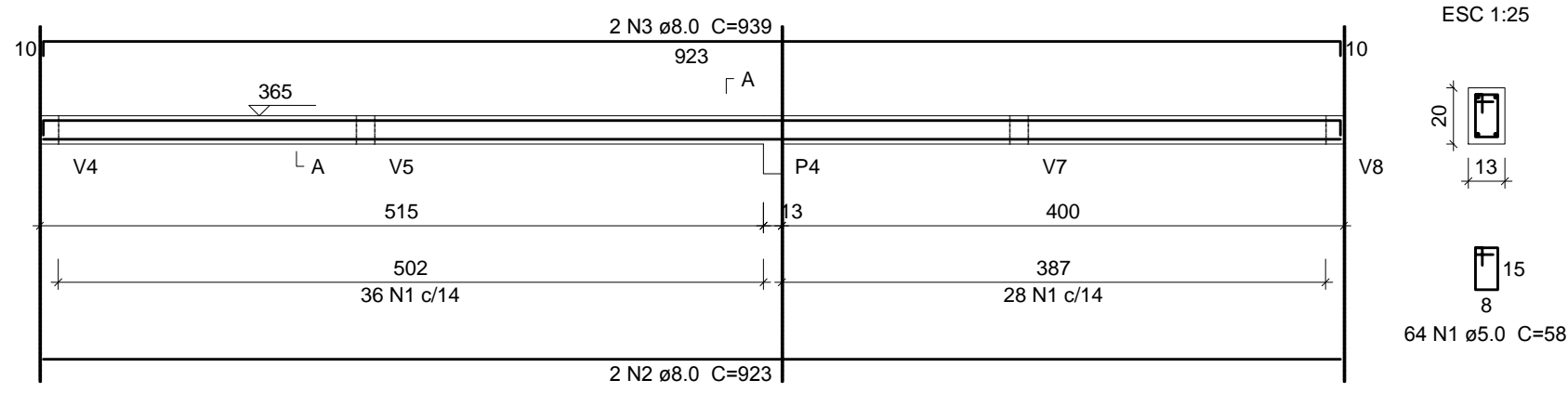
V1 (13 x 20)
ESC 1:50



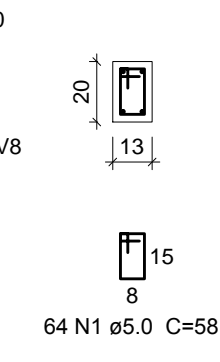
SEÇÃO A-A
ESC 1:25



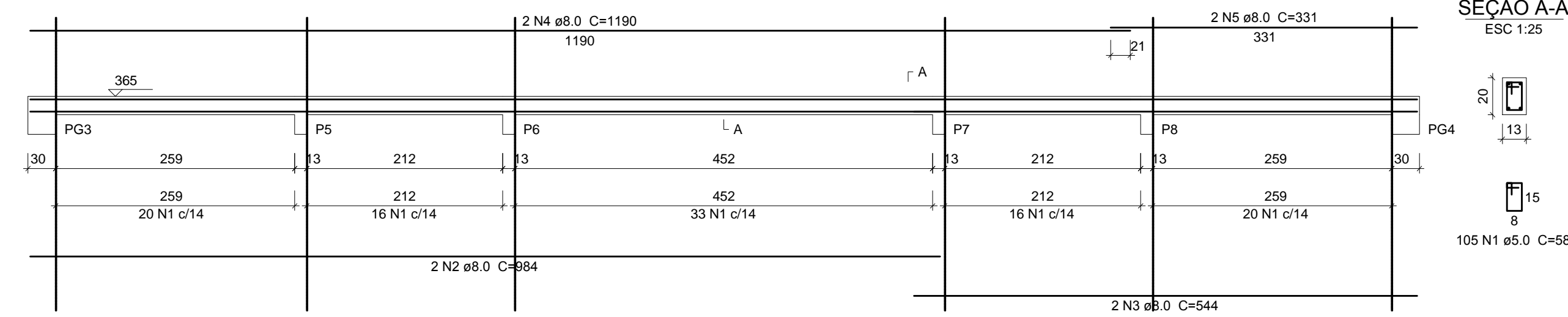
V2 (13 x 20)
ESC 1:50



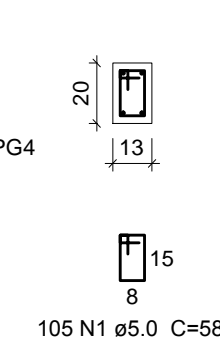
SEÇÃO A-A
ESC 1:25



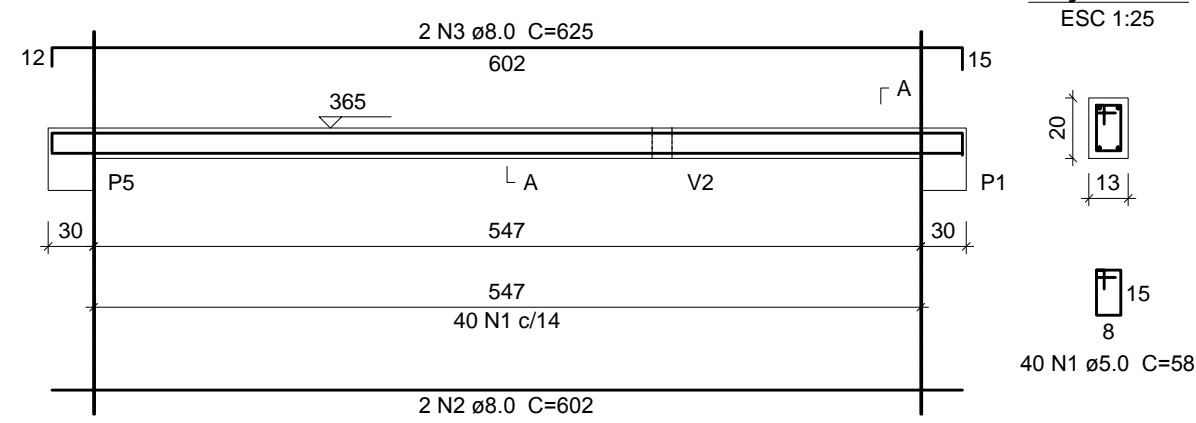
V3 (13 x 20)
ESC 1:50



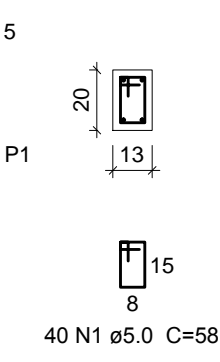
SEÇÃO A-A
ESC 1:25



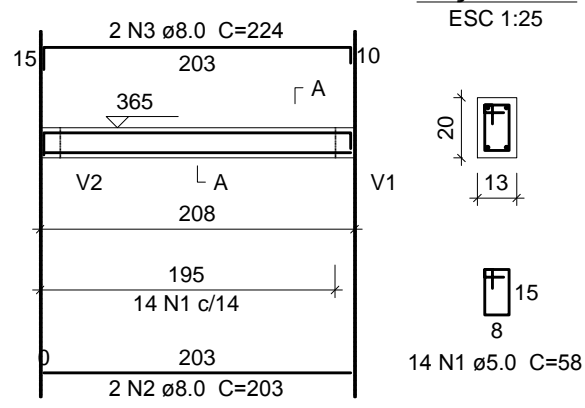
V4 (13 x 20)
ESC 1:50



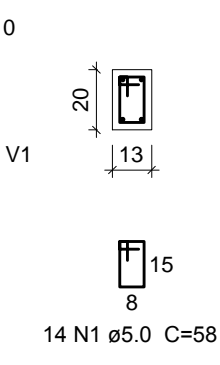
SEÇÃO A-A
ESC 1:25



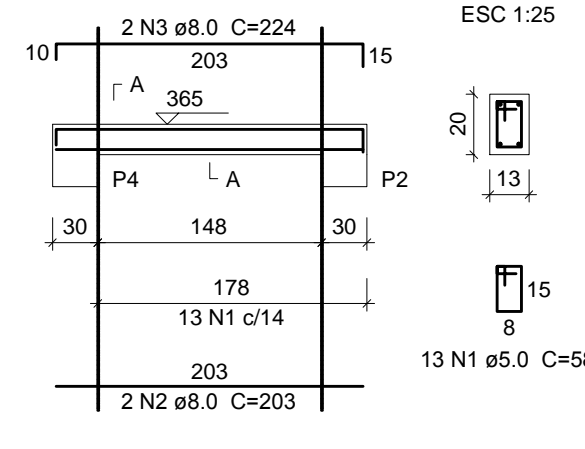
V5 (13 x 20)
ESC 1:50



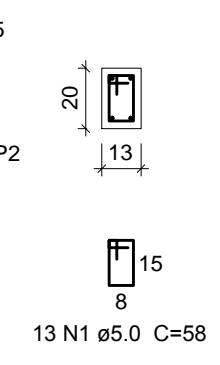
SEÇÃO A-A
ESC 1:25



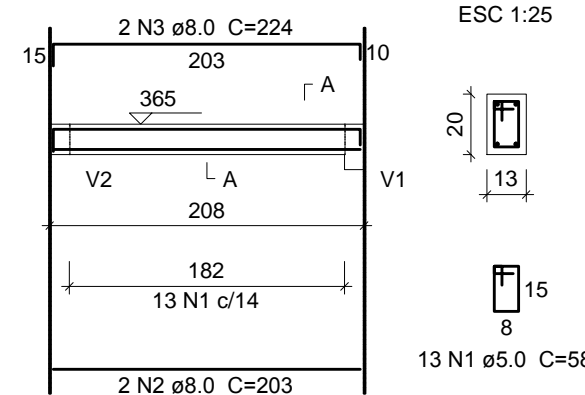
V6 (13 x 20)
ESC 1:50



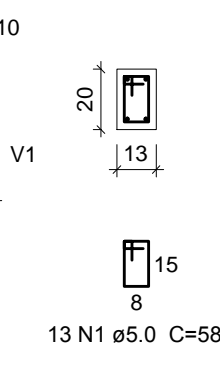
SEÇÃO A-A
ESC 1:25



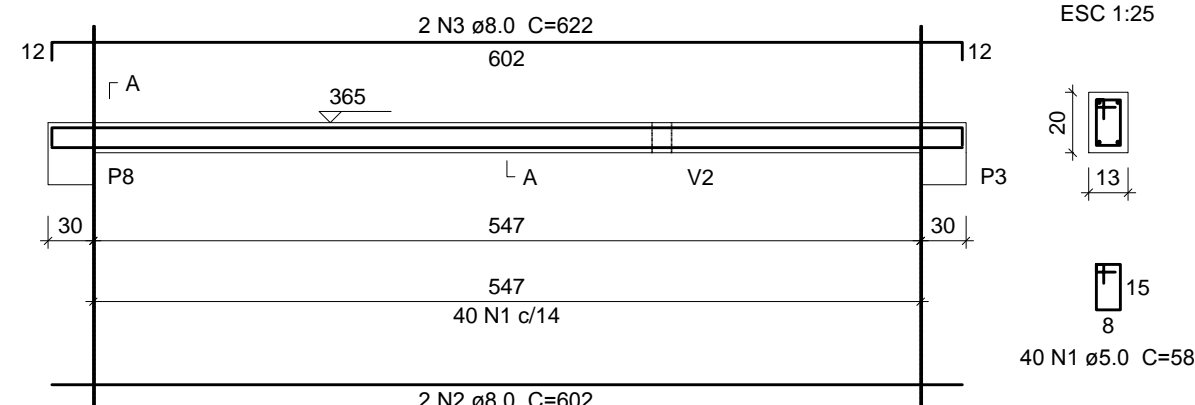
V7 (13 x 20)
ESC 1:50



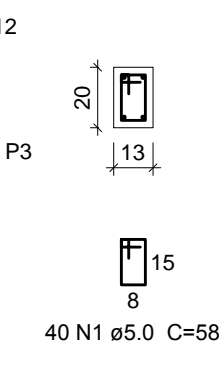
SEÇÃO A-A
ESC 1:25



V8 (13 x 20)
ESC 1:50



SEÇÃO A-A
ESC 1:25



Relação do aço

ELEMENTO	AÇO	N	DIAM (mm)	QUANT	C.UNIT (cm)	C.TOTAL (cm)
V1	CA60	1	5,0	96	58	5568
	CA50	2	8,0	2	809	1618
	CA50	3	8,0	2	694	1388
	CA50	4	8,0	2	1188	2376
	CA50	5	8,0	2	337	674
V2	CA60	1	5,0	64	58	3712
	CA50	2	8,0	2	923	1846
	CA50	3	8,0	2	939	1878
	CA60	1	5,0	105	58	6090
	CA50	2	8,0	2	984	1968
V3	CA50	3	8,0	2	544	1088
	CA50	4	8,0	2	1190	2380
	CA50	5	8,0	2	331	662
	CA60	1	5,0	40	58	2320
	CA50	2	8,0	2	602	1204
V4	CA50	3	8,0	2	625	1250
	CA60	1	5,0	14	58	812
	CA50	2	8,0	2	203	406
	CA50	3	8,0	2	224	448
	CA60	1	5,0	13	58	754
V5	CA50	2	8,0	2	203	406
	CA50	3	8,0	2	224	448
	CA60	1	5,0	13	58	754
	CA50	2	8,0	2	203	406
	CA50	3	8,0	2	224	448
V6	CA60	1	5,0	13	58	754
	CA50	2	8,0	2	203	406
	CA50	3	8,0	2	224	448
	CA60	1	5,0	40	58	2320
	CA50	2	8,0	2	602	1204
V7	CA50	3	8,0	2	622	1244
	CA60	1	5,0	13	58	754
	CA50	2	8,0	2	203	406
	CA50	3	8,0	2	224	448
	CA60	1	5,0	40	58	2320
V8	CA50	2	8,0	2	602	1204
	CA50	3	8,0	2	622	1244

Resumo do aço

AÇO	DIAM (mm)	C.TOTAL (m)	PESO (kg)
CA50	8,0	233,4	92,0
CA60	5,0	223,3	33,7
PESO TOTAL (kg)			
CA50			92,0
CA60			33,7

Volume de concreto (C-30) = 1,47 m³
Área de forma = 30,00 m²

5		
4		
3		
2		
1		
REVISÃO 01	08/07/2020	BENEVIDES
REVISÕES	DATA	VISTO
PROPRIETÁRIO:	Prefeitura Municipal de Macaíba - Secretaria de Infraestrutura	
OBRA:	Via Olímpica de Macaíba	
ENDEREÇO:	Rua José Coelho, Vila Olímpica - Macaíba/RN	
AUTOR DO PROJETO:	Raphaela Thais Oliveira Costa	

PROPRIETÁRIO:	Prefeitura Municipal de Macaíba - Secretaria de Infraestrutura	
AUTOR DO PROJETO:	Raphaela Thais Oliveira Costa	CREA: 2100674013



PREFEITURA MUNICIPAL DE MACAÍBA

SECRETARIA MUNICIPAL DE INFRAESTRUTURA

Sector de Engenharia
Rua Dr. Pedro Maia, 310, Centro-Macaíba/RN - CEP: 59290-000

Projeto Complementares

CONTEÚDO: Referência
Detalhes do Pav. Pórtico 1/2

ÁREA: 364,21 m²

ESCALA: 7/18

DATA: Jan / 2019