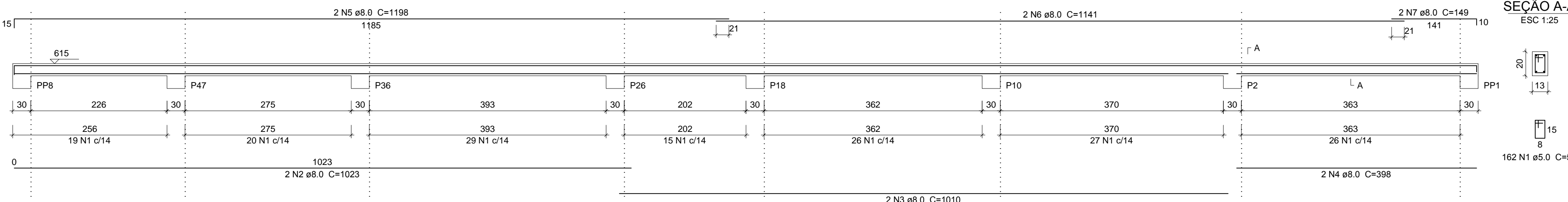
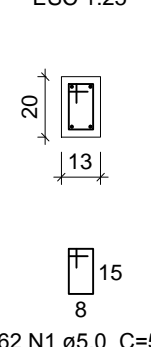


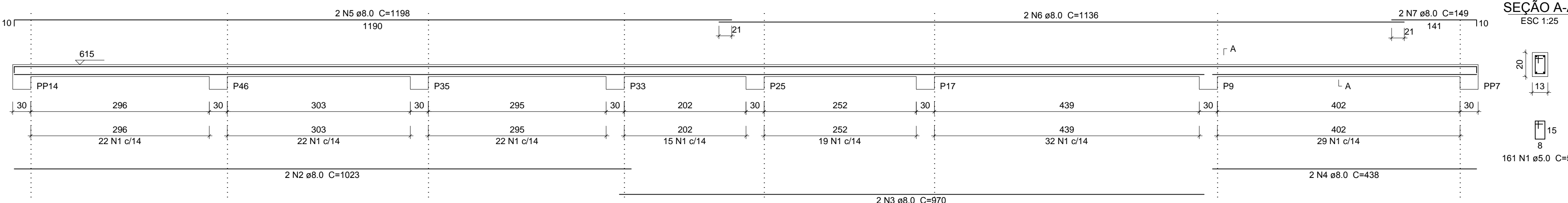
V13 (13 x 20)
ESC 1:50



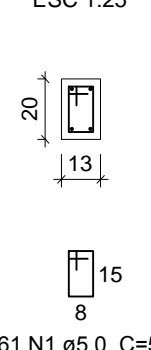
SEÇÃO A-A
ESC 1:25



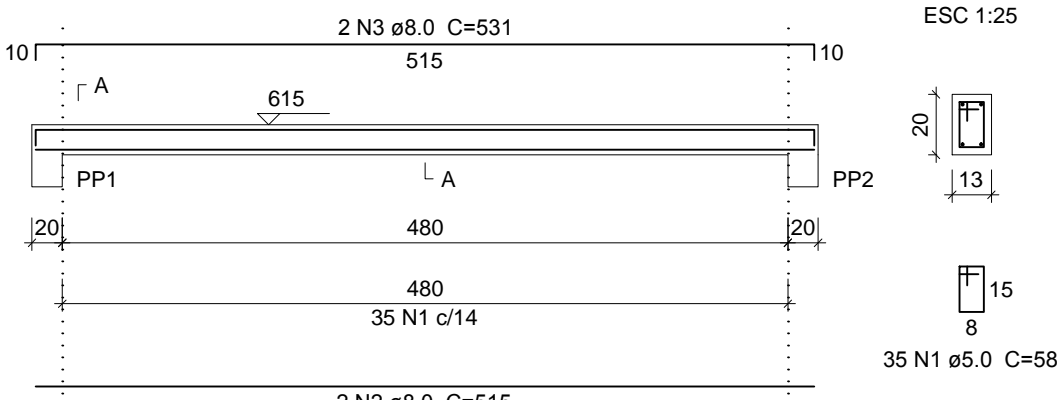
V14 (13 x 20)
ESC 1:50



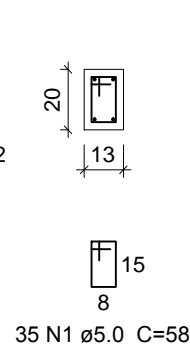
SEÇÃO A-A
ESC 1:25



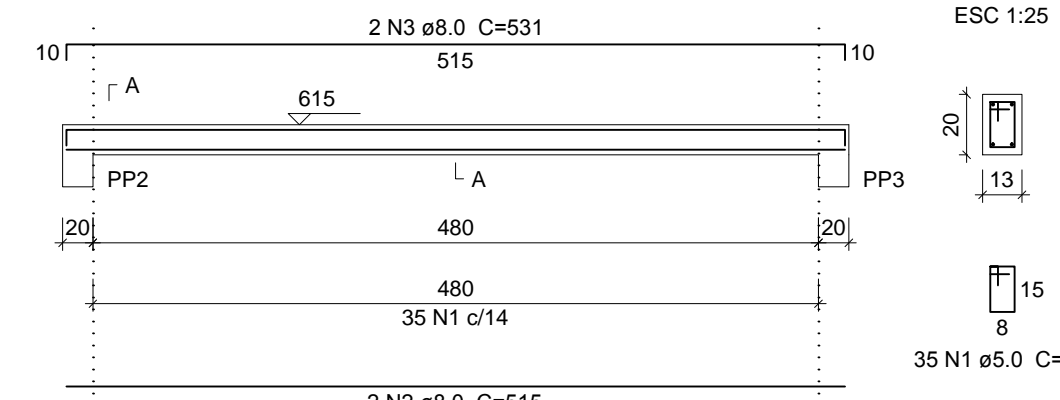
V1 (13 x 20)
ESC 1:50



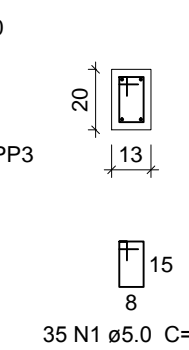
SEÇÃO A-A
ESC 1:25



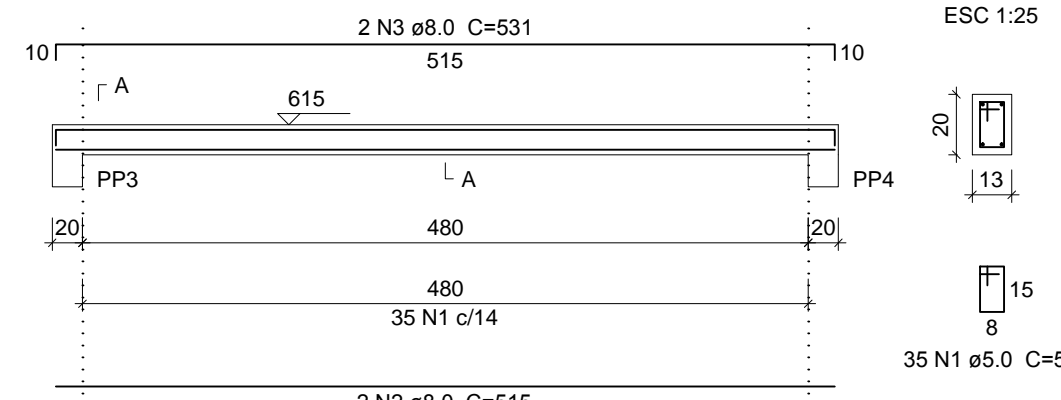
V2 (13 x 20)
ESC 1:50



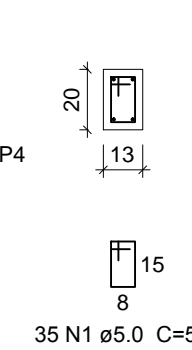
SEÇÃO A-A
ESC 1:25



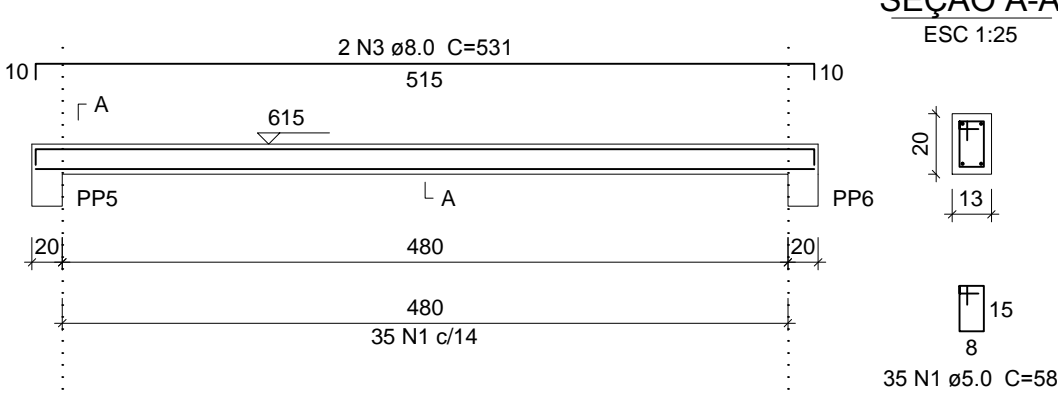
V3 (13 x 20)
ESC 1:50



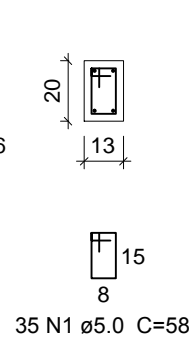
SEÇÃO A-A
ESC 1:25



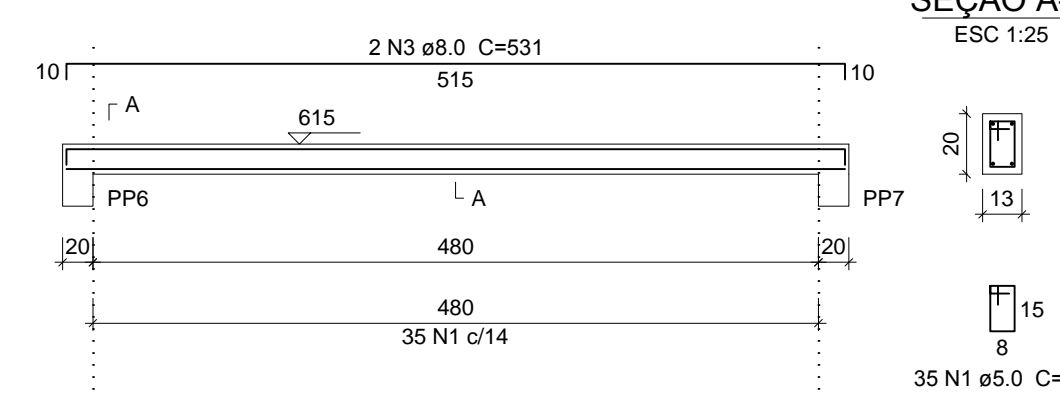
V5 (13 x 20)
ESC 1:50



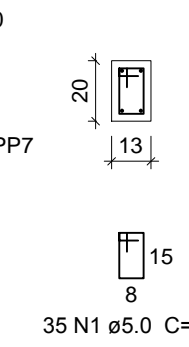
SEÇÃO A-A
ESC 1:25



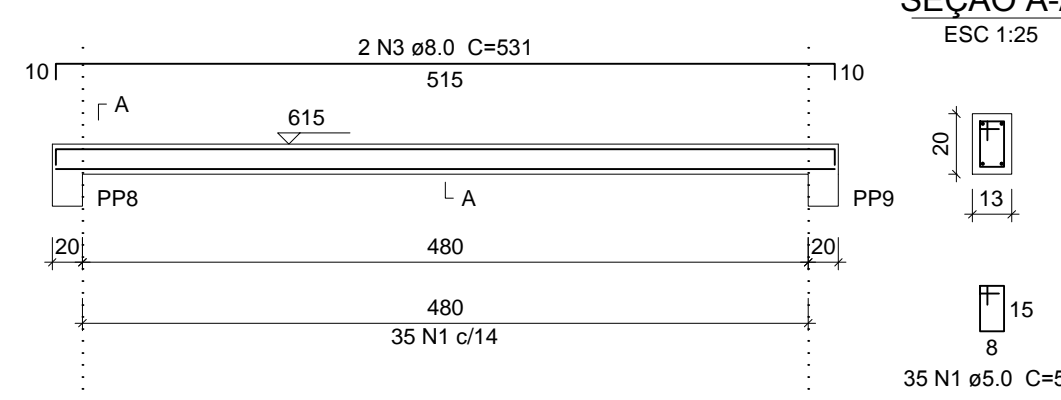
V6 (13 x 20)
ESC 1:50



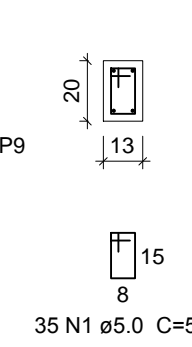
SEÇÃO A-A
ESC 1:25



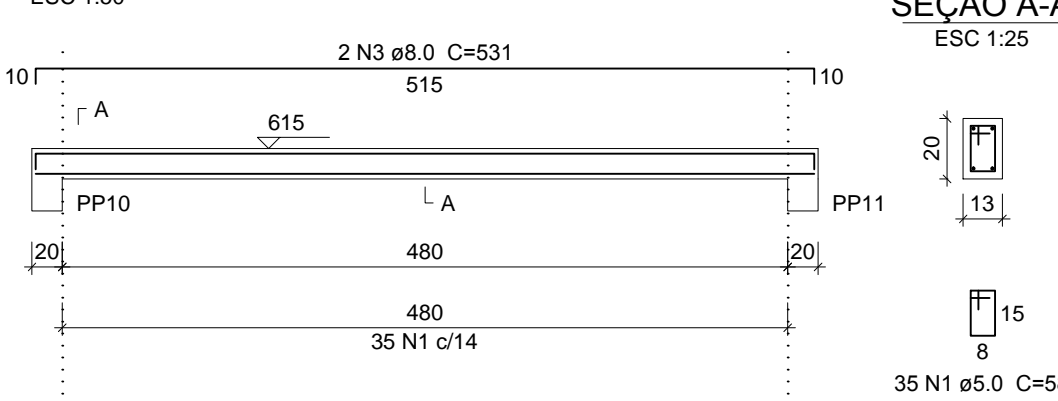
V7 (13 x 20)
ESC 1:50



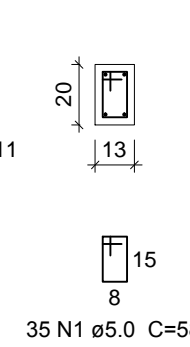
SEÇÃO A-A
ESC 1:25



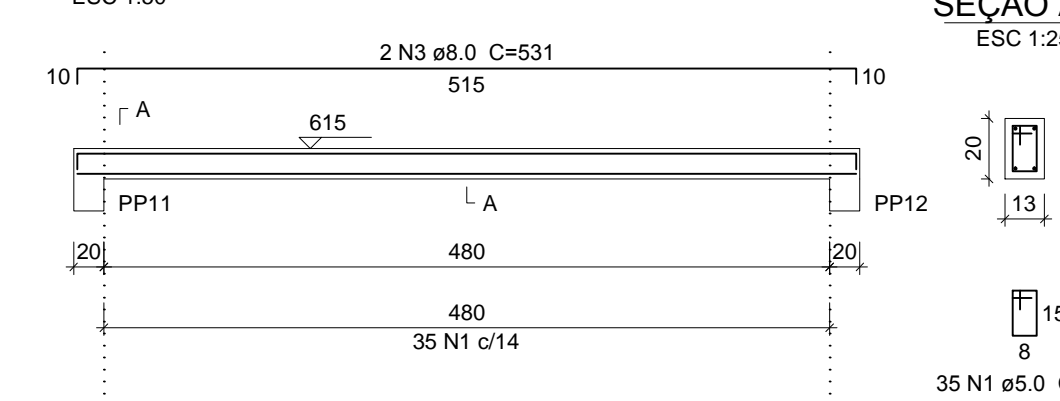
V9 (13 x 20)
ESC 1:50



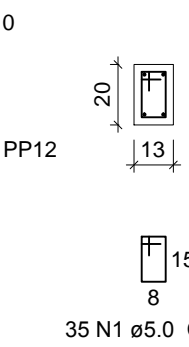
SEÇÃO A-A
ESC 1:25



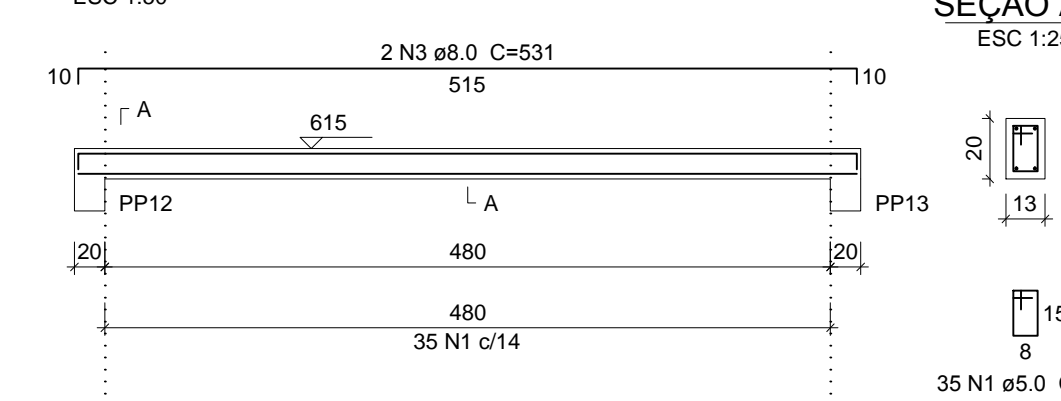
V10 (13 x 20)
ESC 1:50



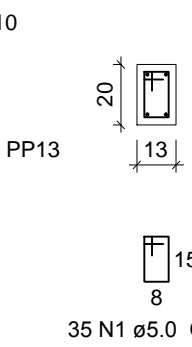
SEÇÃO A-A
ESC 1:25



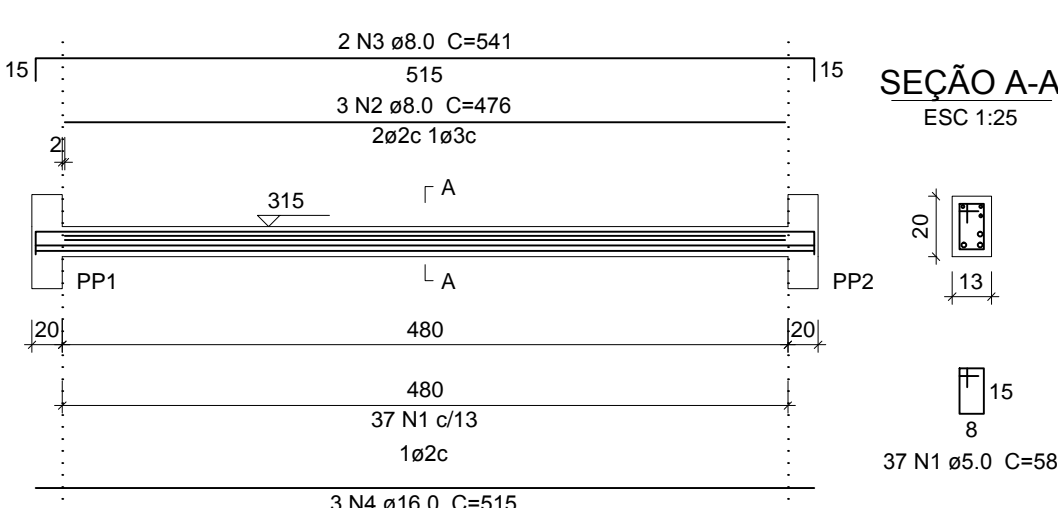
V11 (13 x 20)
ESC 1:50



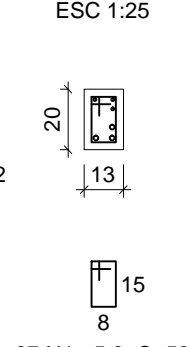
SEÇÃO A-A
ESC 1:25



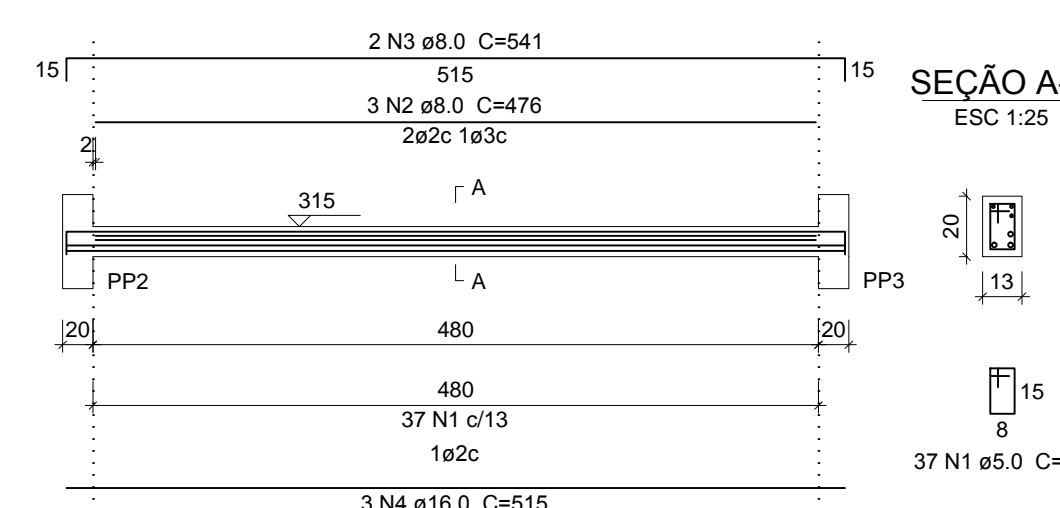
V15 (13 x 20)
ESC 1:50



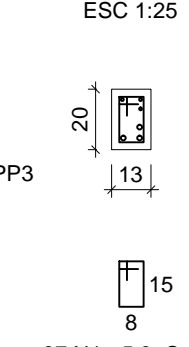
SEÇÃO A-A
ESC 1:25



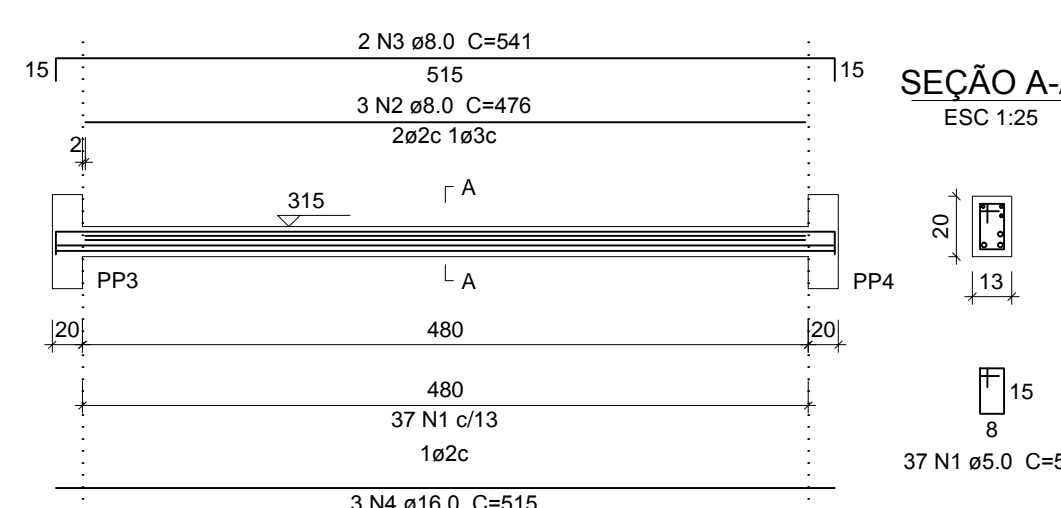
V16 (13 x 20)
ESC 1:50



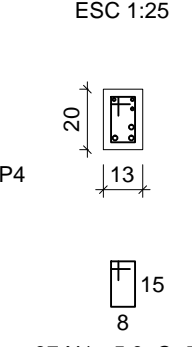
SEÇÃO A-A
ESC 1:25



V17 (13 x 20)
ESC 1:50



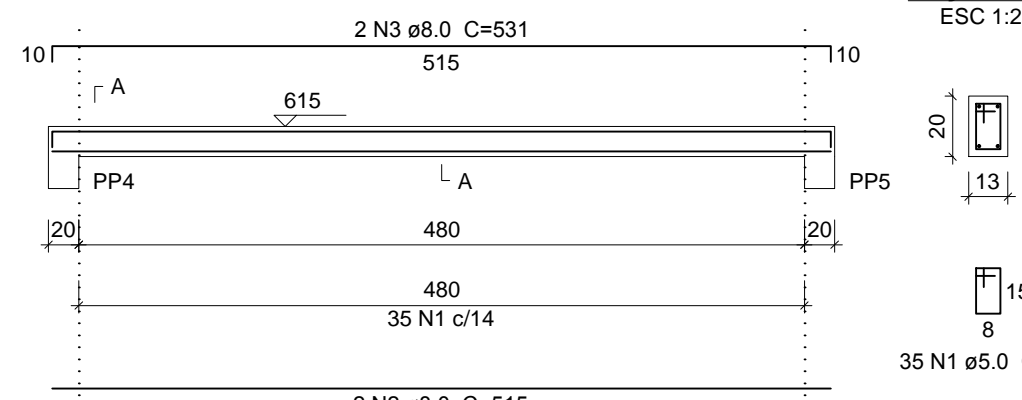
SEÇÃO A-A
ESC 1:25



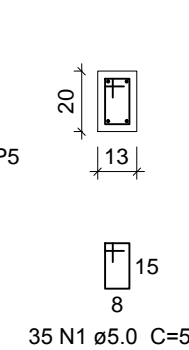
NOTAS GERAIS

- 1- DIMENSÕES E ELEVÇÕES EM CENTÍMETRO
- 2- TAXA ADMISSÍVEL DO TERRENO 1.0kg/cm² (Estimada)

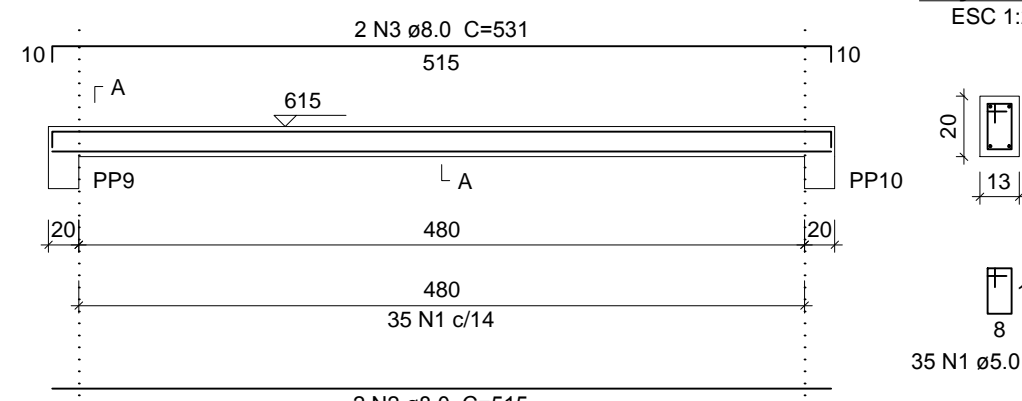
V4 (13 x 20)
ESC 1:50



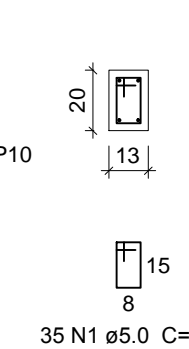
SEÇÃO A-A
ESC 1:25



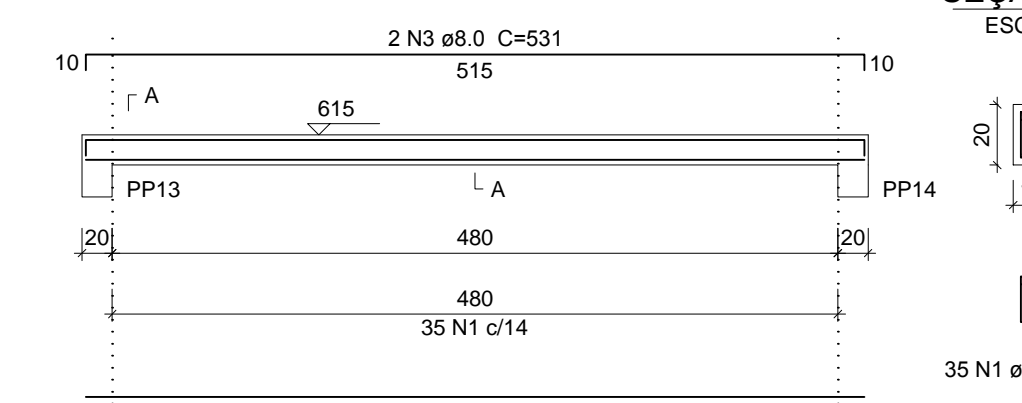
V8 (13 x 20)
ESC 1:50



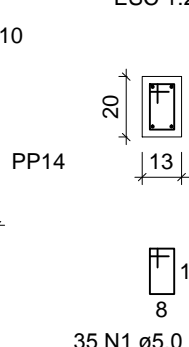
SEÇÃO A-A
ESC 1:25



V12 (13 x 20)
ESC 1:50



SEÇÃO A-A
ESC 1:25



Relação do aço

ELEMENTO	ACO	N	DIAM (mm)	QUANT	C.UNIT (cm)	C.TOTAL (cm)
V1	CA60	1	5.0	35	58	2030
	CA50	2	8.0	2	515	1030
	CA50	3	8.0	2	531	1062
V2	CA60	1	5.0	35	58	2030
	CA50	2	8.0	2	515	1030
	CA50	3	8.0	2	531	1062
V3	CA60	1	5.0	35	58	2030
	CA50	2	8.0	2	515	1030
	CA50	3	8.0	2	531	1062
V4	CA60	1	5.0	35	58	2030
	CA50	2	8.0	2	515	1030
	CA50	3	8.0	2	531	1062
V5	CA60	1	5.0	35	58	2030
	CA50	2	8.0	2	515	1030
	CA50	3	8.0	2	531	1062
V6	CA60	1	5.0	35	58	2030
	CA50	2	8.0	2	515	1030
	CA50	3	8.0	2	531	1062
V7	CA60	1	5.0	35	58	2030
	CA50	2	8.0	2	515	1030
	CA50	3	8.0	2	531	1062
V8	CA60	1	5.0	35	58	2030
	CA50	2	8.0	2	515	1030
	CA50	3	8.0	2	531	1062
V9	CA60	1	5.0	35	58	2030
	CA50	2	8.0	2	515	1030
	CA50	3	8.0	2	531	1062
V10	CA60	1	5.0	35	58	2030
	CA50	2	8.0	2	515	1030
	CA50	3	8.0	2	531	1062
V11	CA60	1	5.0	35	58	2030
	CA50	2	8.0	2	515	1030
	CA50	3	8.0	2	531	1062
V12	CA60	1	5.0	35	58	2030
	CA50	2	8.0	2	515	1030
	CA50	3	8.0	2	531	1062
V13	CA60	1	5.0	162	58	9396
	CA50	2	8.0	2	1023	2046
	CA50	3	8.0	2	1010	2020
	CA50	4	8.0	2	388	796
	CA50	5	8.0	2	1198	2396
	CA50	6	8.0	2	1141	2282
	CA50	7	8.0	2	149	298
	CA60	1	5.0	161	58	9338
	CA50	2	8.0	2	1023	2046
	CA50	3	8.0	2	970	1940
	CA50	4	8.0	2	438	876
	CA50	5	8.0	2	1198	2396
	CA50	6	8.0	2	1136	2272
	CA50	7	8.0	2	149	298
	CA60	1	5.0	37	58	2146
	CA50	2	8.0	3	476	1428
	CA50	3	8.0	2	541	1082
	CA50	4	16.0	3	515	1545
	CA60	1	5.0	37	58	2146
	CA50	2	8.0	3	476	1428
	CA50	3	8.0	2	541	1082
	CA50	4	16.0	3	515	1545
	CA60	1	5.0	37	58	2146
	CA50	2	8.0	3	476	1428
	CA50	3	8.0	2	541	1082
	CA50	4	16.0	3	515	1545

Resumo do aço

ACO	DIAM (mm)	C.TOTAL (m)	PESO (kg)
CA50	8.0	523	206.4
	16.0	46.4	73.2
CA60	5.0	495.4	76.3
PESO TOTAL (kg)			
CA50		279.5	
CA60		76.3	

Volume de concreto (C-30) = 3.29 m³
Área de forma = 67.1 m²

5		
4		
3		
2		
1		
REVISÕES		DATA
PROPRIETÁRIO:	Prefeitura Municipal de Macaíba	
OBRA:	Complexo Esportivo de Macaíba	
ENDEREÇO:	Rua José Coelho, Vila Olímpica-Macaíba/RN	
AUTOR DO PROJETO:	Engº Manoel Beneditos Filho	
PROPRIETÁRIO: Prefeitura de Macaíba		
AUTOR DO PROJETO: Manoel Beneditos Filho		
CREA: 2100942603		



PREFEITURA MUNICIPAL DE MACAÍBA

SECRETARIA MUNICIPAL DE INFRAESTRUTURA

Setor de Engenharia
Rua Dr. Pedro Maciel, 310, Centro-Macaíba/RN - CEP: 66280-000

Projeto Estrutural com Fundações

DERENHO: Beneditos

ÁREA: 733,86 m²

ESCALA: Indicação

DATA: Jan / 2019

11/15