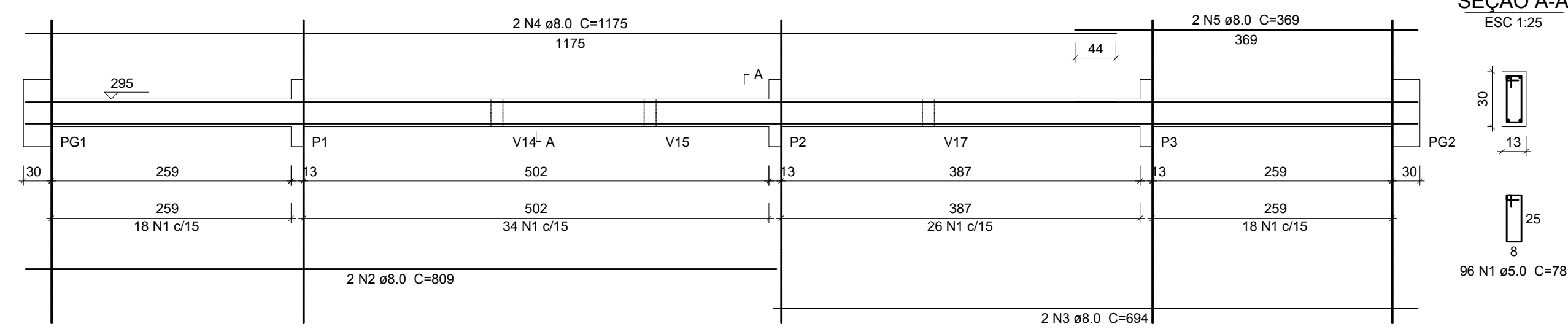


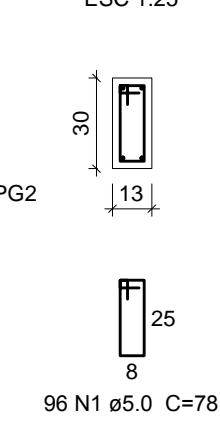
NOTAS GERAIS

- 1 - DIMENSÕES E ELEVAÇÕES EM CENTÍMETRO
- 2 - TAXA ADMISSÍVEL DO TERRENO 1,0kg/cm² (Estimada)

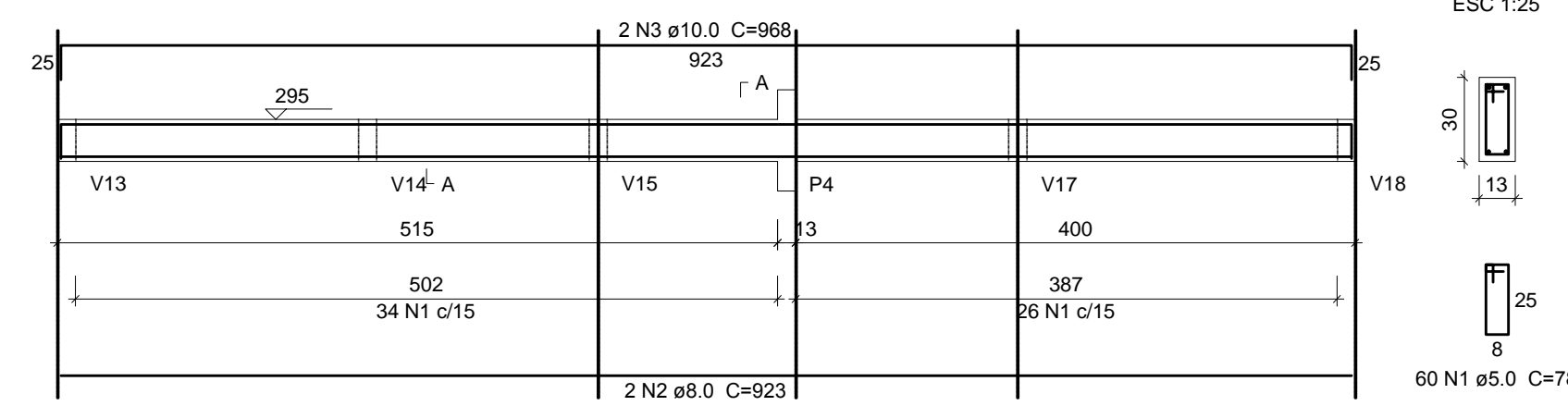
V9 (13 x 30)
ESC 1:50



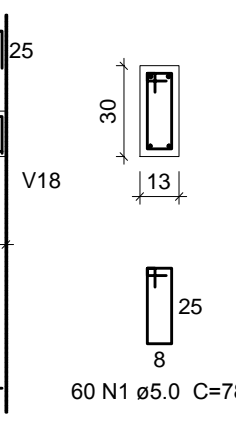
SEÇÃO A-A
ESC 1:25



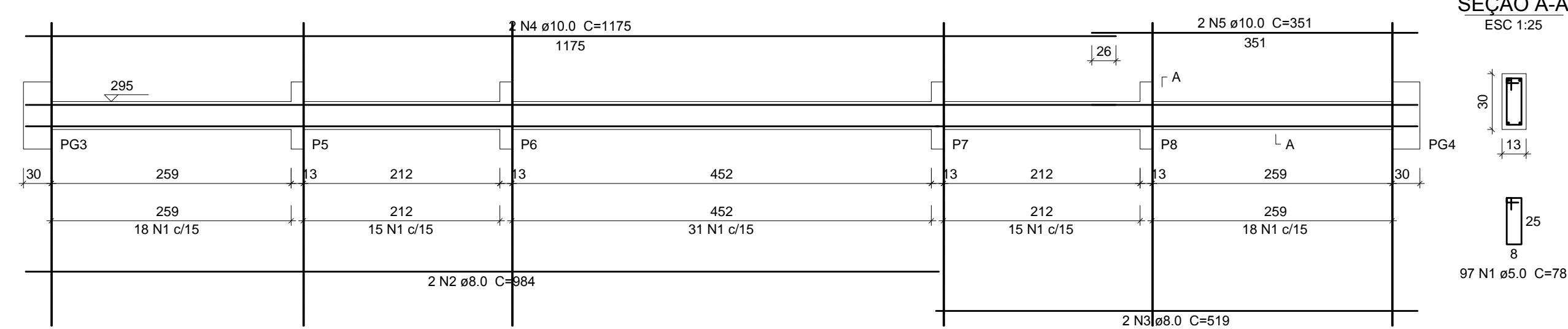
V10 (13 x 30)
ESC 1:50



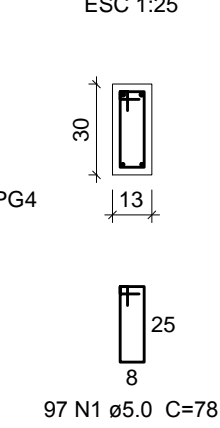
SEÇÃO A-A
ESC 1:25



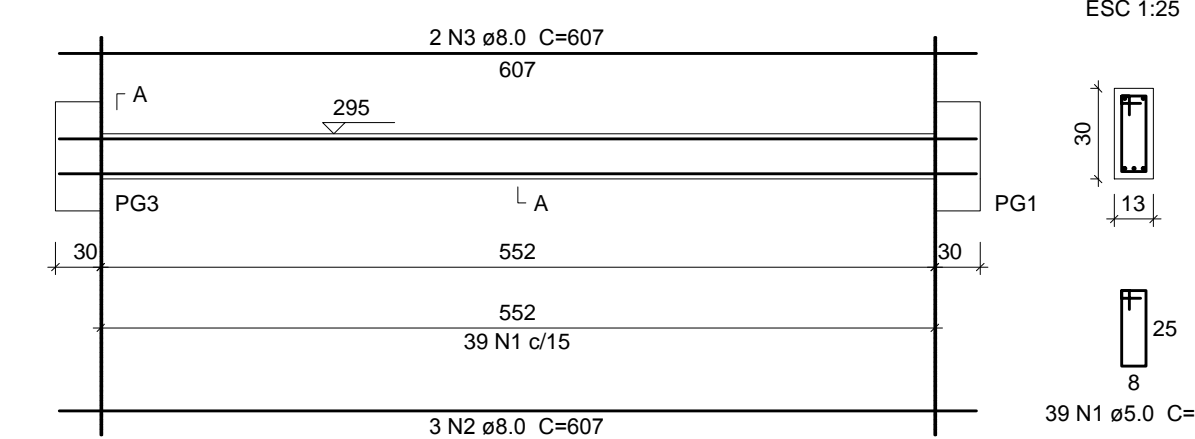
V11 (13 x 30)
ESC 1:50



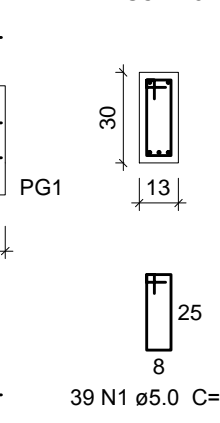
SEÇÃO A-A
ESC 1:25



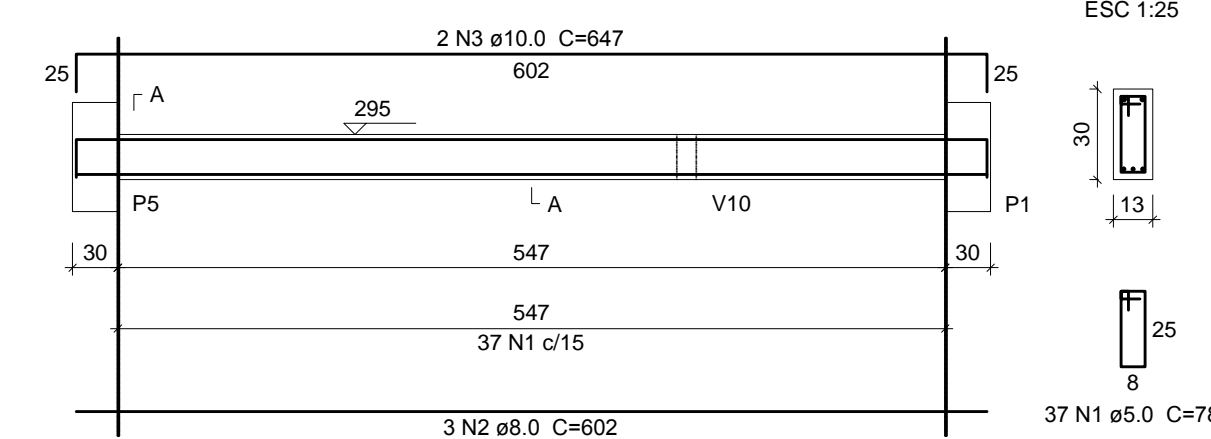
V12 (13 x 30)
ESC 1:50



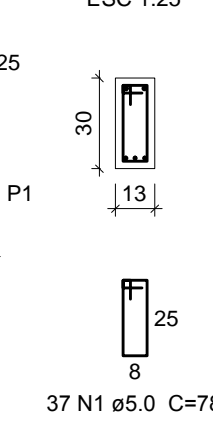
SEÇÃO A-A
ESC 1:25



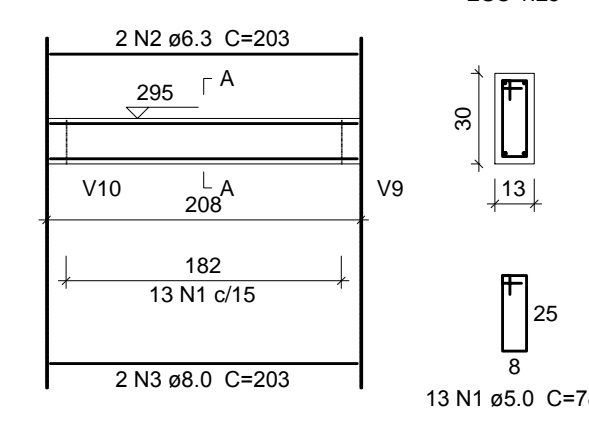
V13 (13 x 30)
ESC 1:50



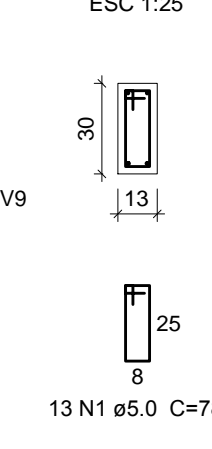
SEÇÃO A-A
ESC 1:25



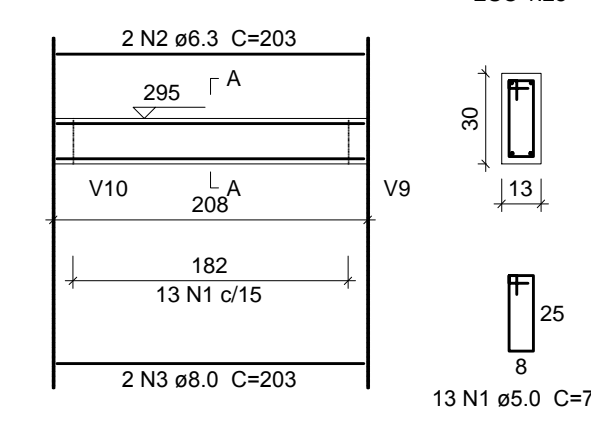
V14 (13 x 30)
ESC 1:50



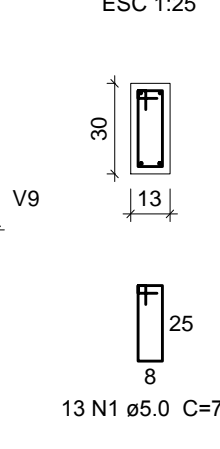
SEÇÃO A-A
ESC 1:25



V15 (13 x 30)
ESC 1:50



SEÇÃO A-A
ESC 1:25



Relação do aço

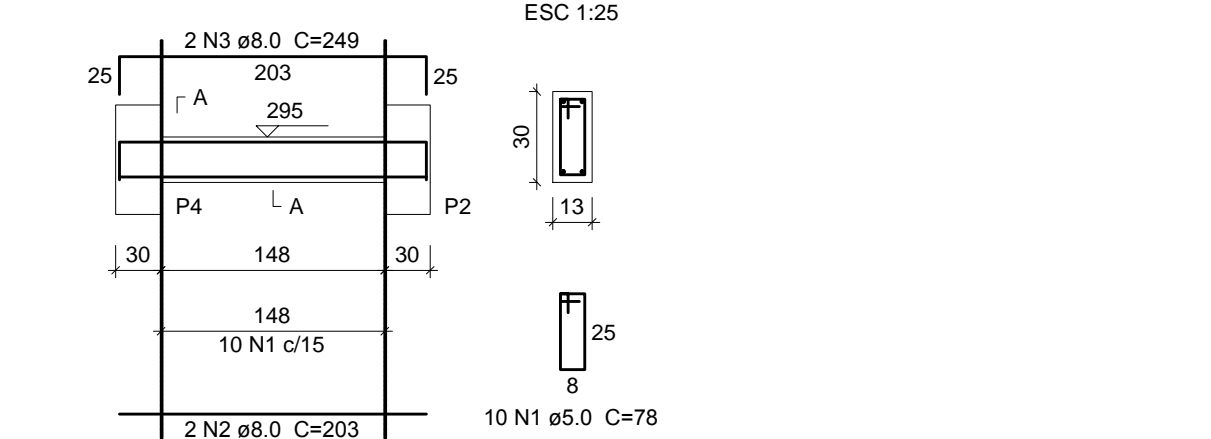
ELEMENTO	AÇO	N	DIAM (mm)	QUANT	UNIT (cm)	C.TOTAL (cm)
V9	CA60	1	5,0	96	78	7488
	CA50	2	8,0	2	809	1618
	CA50	3	8,0	2	694	1388
	CA50	4	8,0	2	1175	2350
	CA50	5	8,0	2	369	738
V10	CA60	1	5,0	60	78	4680
	CA50	2	8,0	2	923	1846
	CA50	3	10,0	2	968	1936
	CA60	1	5,0	97	78	7668
	CA50	2	8,0	2	984	1968
V11	CA50	3	8,0	2	519	1038
	CA50	4	10,0	2	1175	2350
	CA50	5	10,0	2	351	702
	CA60	1	5,0	39	78	3042
	CA50	2	8,0	3	607	1821
V12	CA50	3	8,0	2	647	1294
	CA60	1	5,0	37	78	2886
	CA50	2	8,0	3	602	1806
	CA50	3	8,0	2	203	406
	CA60	1	5,0	10	78	780
V13	CA50	1	5,0	13	78	1014
	CA50	2	6,3	2	203	406
	CA50	3	8,0	2	203	406
	CA50	3	10,0	2	647	1294
	CA60	1	5,0	13	78	1014
V14	CA50	2	6,3	2	203	406
	CA50	3	8,0	2	203	406
	CA50	3	8,0	2	203	406
	CA60	1	5,0	10	78	780
	CA50	2	8,0	2	203	406
V15	CA50	3	8,0	2	249	498
	CA60	1	5,0	13	78	1014
	CA50	2	6,3	2	203	406
	CA50	3	8,0	2	203	406
	CA60	1	5,0	10	78	780
V16	CA50	3	8,0	2	249	498
	CA60	1	5,0	13	78	1014
	CA50	2	6,3	2	203	406
	CA50	3	8,0	2	203	406
	CA60	1	5,0	10	78	780
V17	CA50	3	10,0	2	647	1294
	CA60	1	5,0	37	78	2886
	CA50	2	8,0	3	602	1806
	CA50	3	8,0	2	647	1294
	CA60	1	5,0	39	78	3042
V18	CA50	2	8,0	3	607	1821
	CA50	3	8,0	2	607	1214
	CA50	3	8,0	2	607	1214
V19	CA50	1	5,0	39	78	3042
	CA50	2	8,0	3	607	1821
	CA50	3	8,0	2	607	1214

Resumo do aço

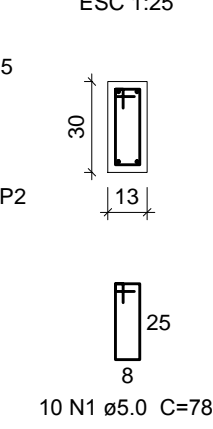
AÇO	DIAM (mm)	C.TOTAL (m)	PESO (kg)
CA50	6,3	12,2	3,0
	8,0	227,5	89,6
	10,0	73,8	46,8
CA60	5,0	354,1	53,5
PESO TOTAL (kg)			
CA50		139,4	
CA60		53,5	

Volume de concreto (C-30) = 2,8 m³
Área de forma = 51,74 m²

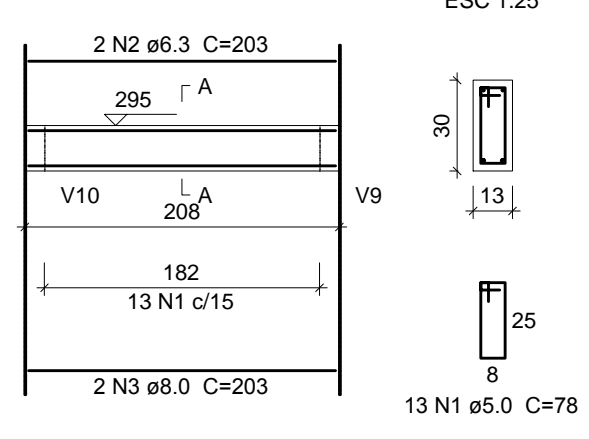
V16 (13 x 30)
ESC 1:50



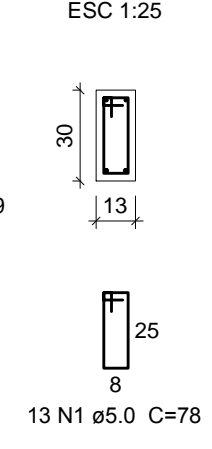
SEÇÃO A-A
ESC 1:25



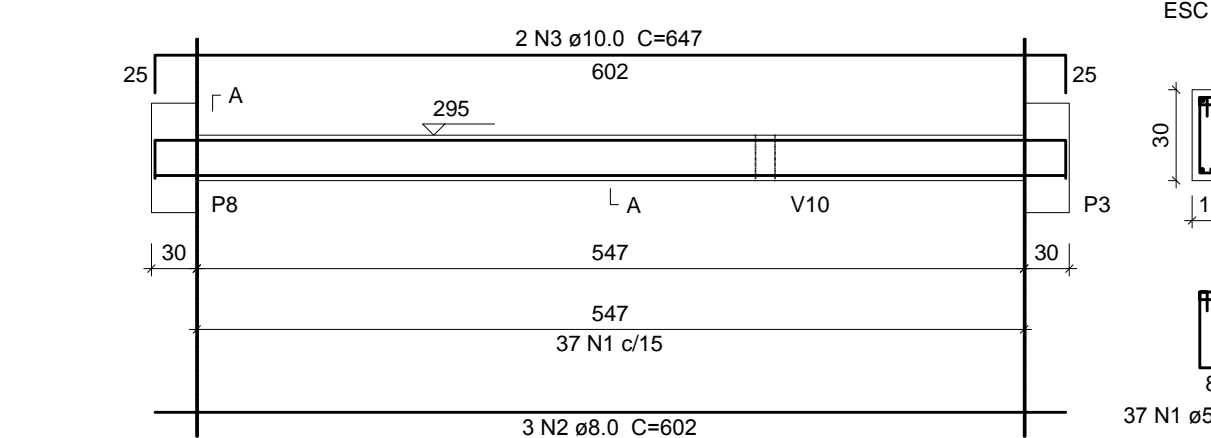
V17 (13 x 30)
ESC 1:50



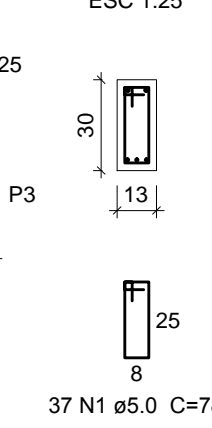
SEÇÃO A-A
ESC 1:25



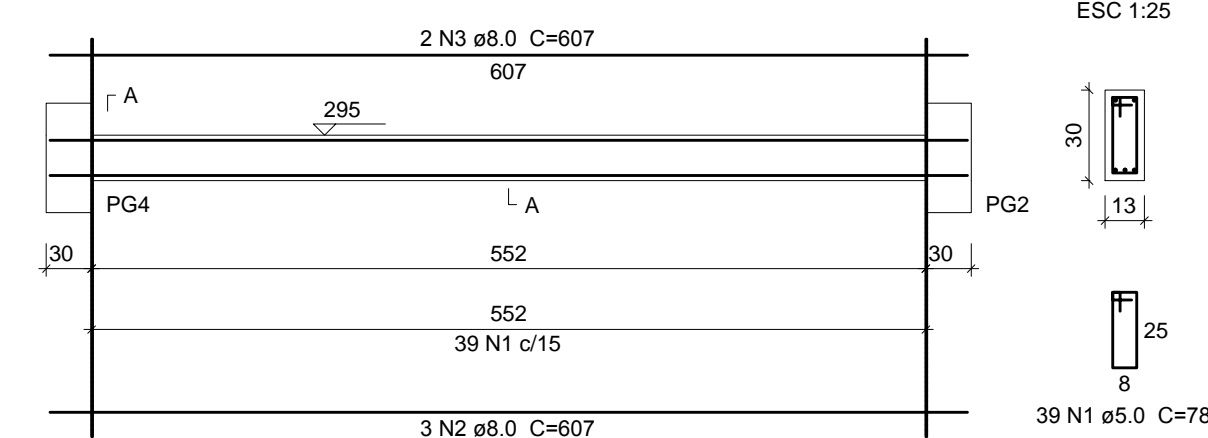
V18 (13 x 30)
ESC 1:50



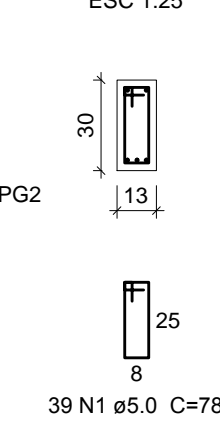
SEÇÃO A-A
ESC 1:25



V19 (13 x 30)
ESC 1:50



SEÇÃO A-A
ESC 1:25



5		
4		
3		
2		
1		
REVISÃO 01	08/07/2020	BENEVIDES
REVISÕES	DATA	VEITO
PROPRIETÁRIO:	Prefeitura Municipal de Macaíba - Secretaria de Infraestrutura	
OBRA:	Via Olímpica de Macaíba	
ENDEREÇO:	Rua José Coelho, Via Olímpica - Macaíba/RN	
AUTOR DO PROJETO:	Raphaela Thaís Oliveira Costa	

PROPRIETÁRIO:	Prefeitura Municipal de Macaíba - Secretaria de Infraestrutura	
AUTOR DO PROJETO:	Raphaela Thaís Oliveira Costa	CREA: 2100674013



PREFEITURA MUNICIPAL DE MACAÍBA			
SECRETARIA MUNICIPAL DE INFRAESTRUTURA		EST	
Setor de Engenharia		8/18	
Rua Dr. Pedro Meira, 313, Centro-Macaíba/RN - CEP: 59280-000		DESENHO: Benevides	
Projetos Complementares		ÁREA: 364,21 m²	
CONTEÚDO:	Relatório: Detalhes de Pav. Físico 2/2	ESCALA:	DATA: 08/11/2019