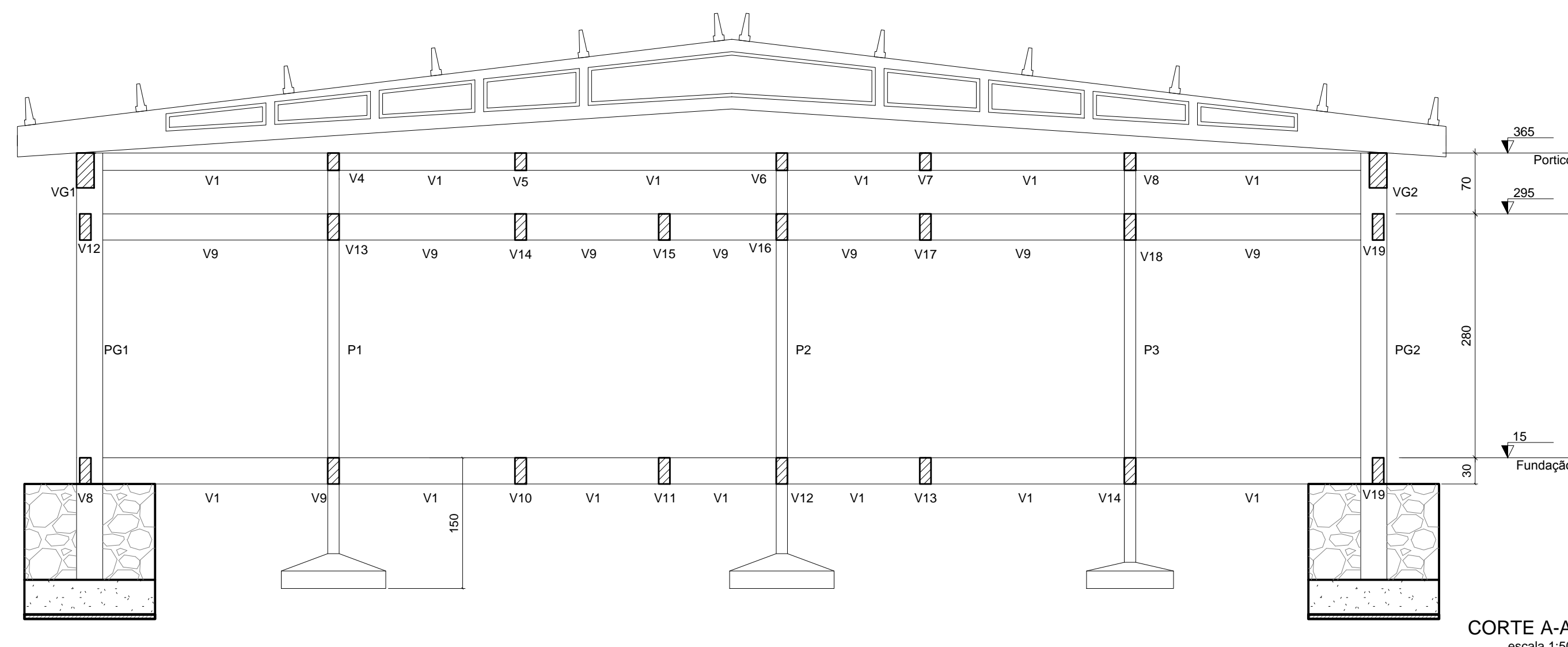
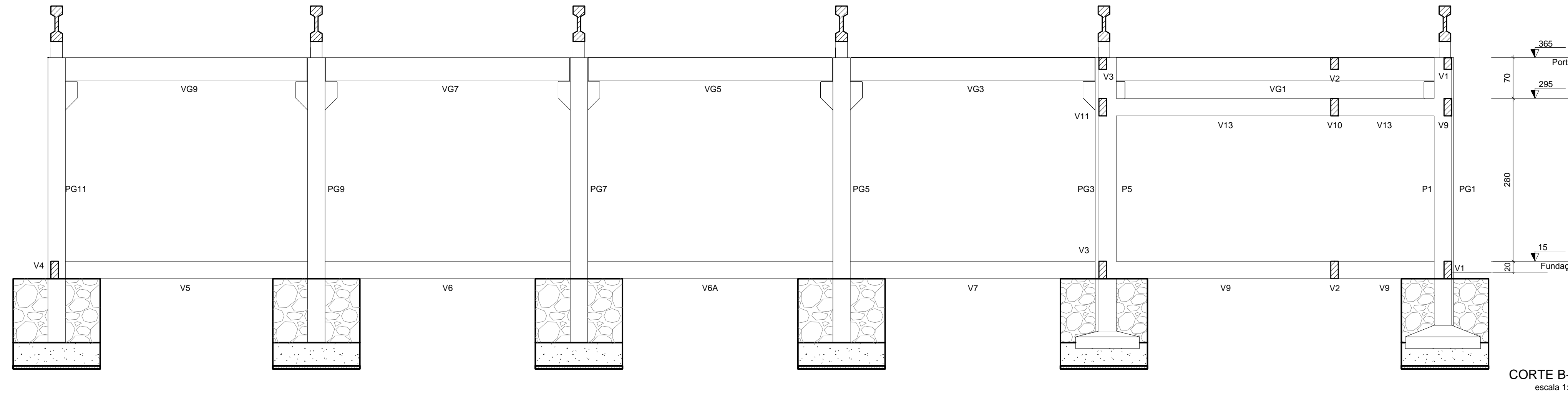


NOTAS GERAIS

- 1 - DIMENSÕES E ELEVAÇÕES EM CENTÍMETRO
- 2 - TAXA ADMISSÍVEL DO TERRENO 1,0Kg/cm² (Estimada)



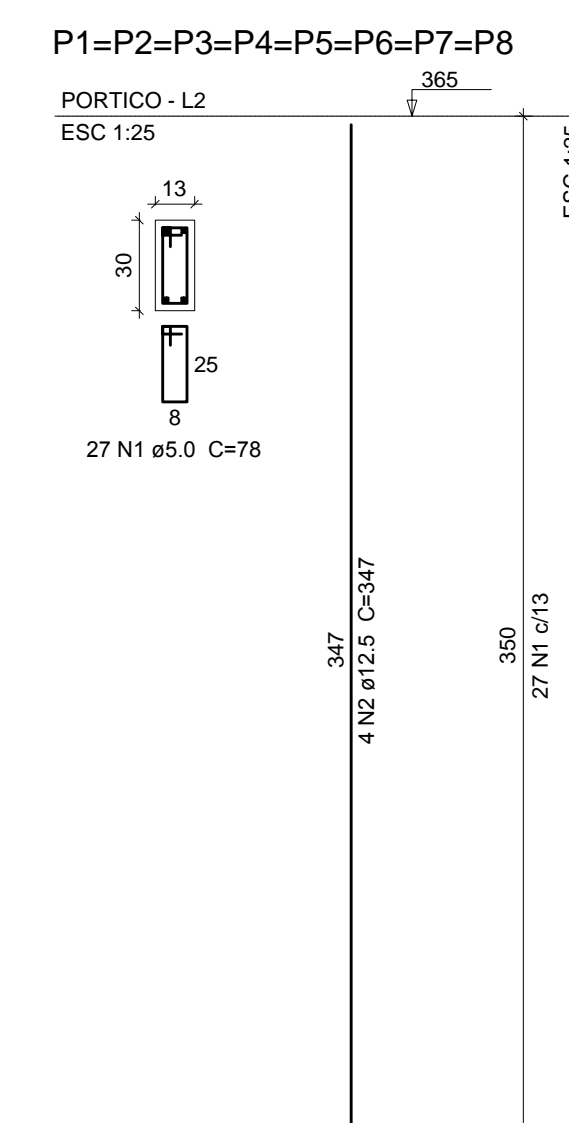
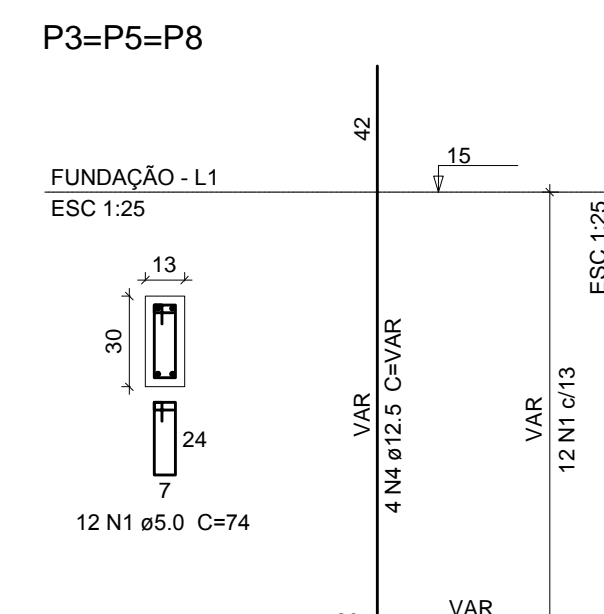
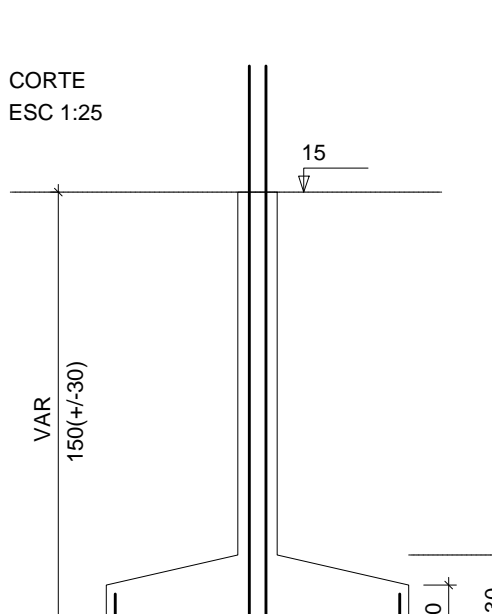
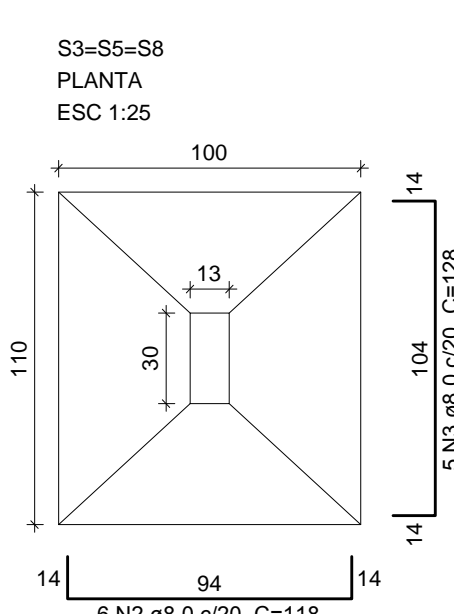
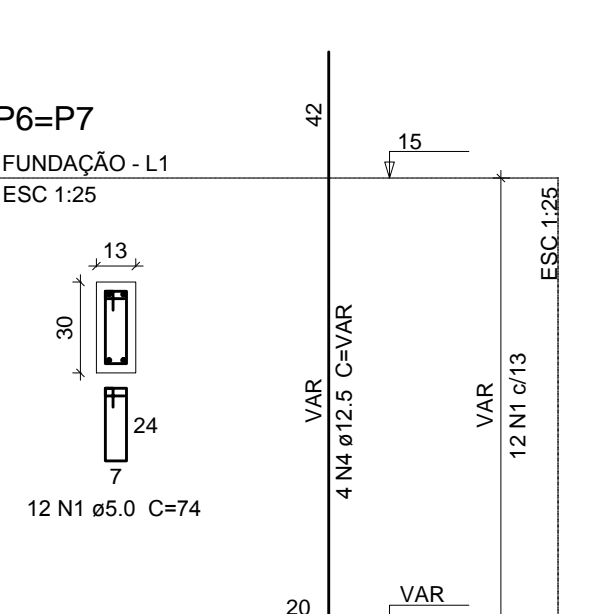
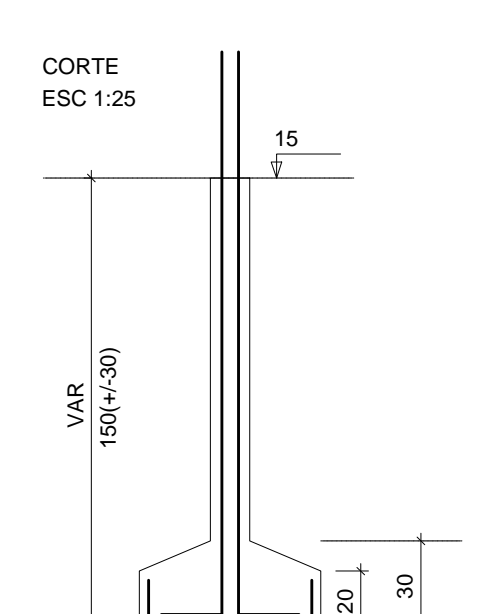
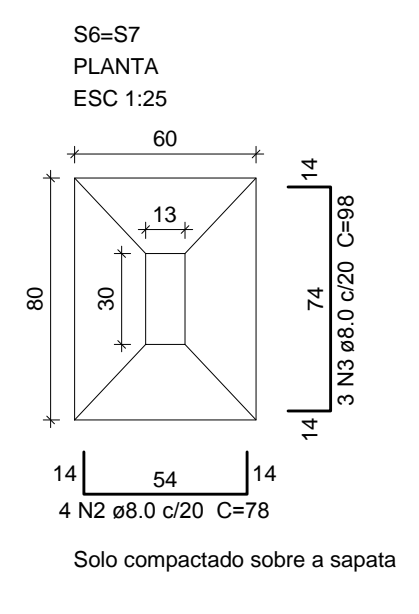
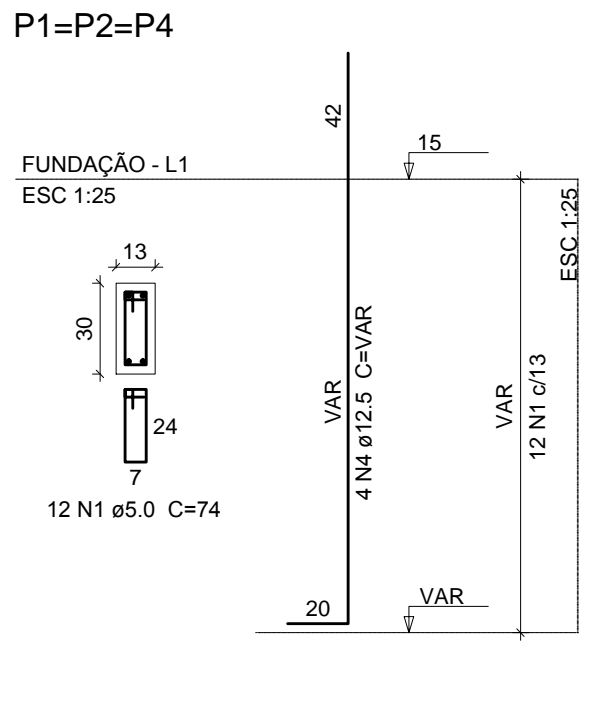
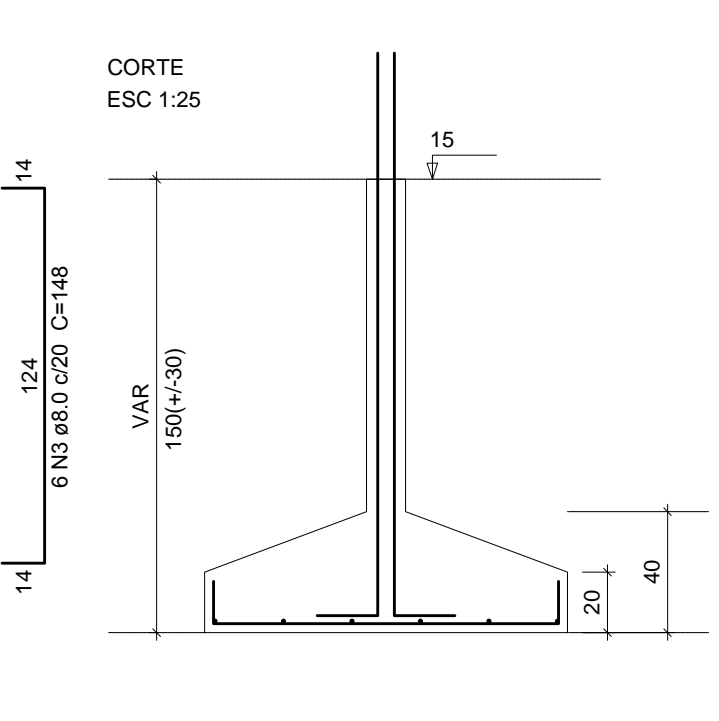
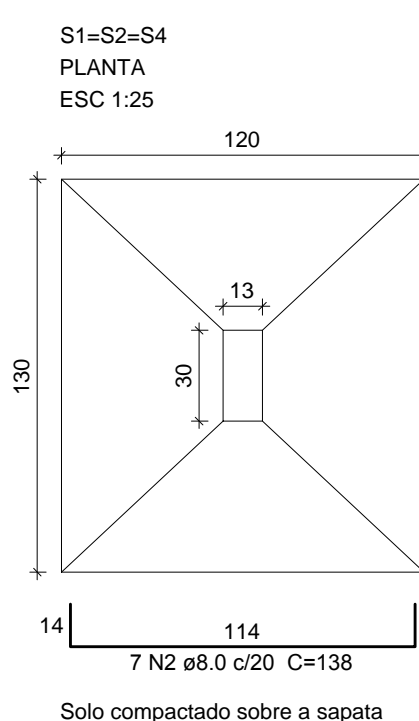
Relação do aço

ELEMENTO	AÇO	N	DIAM (mm)	QUANT	C.UNIT (cm)	C.TOTAL (cm)
Fundação 3xS1	CA60	1	5,0	36	74	2664
	CA50	2	8,0	21	138	2898
	CA50	3	8,0	18	148	2664
	CA50	4	12,5	12	VAR	VAR
	CA60	1	5,0	24	74	1776
	CA50	2	8,0	8	78	624
2xS7	CA50	3	8,0	6	98	588
	CA50	4	12,5	8	VAR	VAR
	CA60	1	5,0	36	74	2664
	CA50	2	8,0	18	118	2124
3xS8	CA50	3	8,0	15	128	1920
	CA50	4	12,5	12	VAR	VAR
	CA60	1	5,0	216	78	16848
Pilares 8xP1	CA60	1	5,0	216	78	16848
	CA50	2	12,5	32	347	11104

Resumo do aço

AÇO	DIAM (mm)	C.TOTAL (m)	PESO (kg)
CA60	8,0	108,2	42,7
CA60	12,5	177,0	174,5
CA60	5,0	239,6	35,93
PESO TOTAL (kg)			
CA50		308,0	
CA60		63,3	

Volume de concreto (C-30) = 3,8 m³
Área de forma = 54,56 m²



5		
4		
3		
2		
1	REVISÃO 01	08/07/2020 BENEVIDES
REVISÕES DATA VISTO		
PROPRIETÁRIO:	Prefeitura Municipal de Macaíba - Secretaria de Infraestrutura	
OBRA:	Via Olímpica de Macaíba	
ENDEREÇO:	Rua José Coelho, Via Olímpica - Macaíba/RN	
AUTOR DO PROJETO:	Raphaela Thaís Oliveira Costa	
PROPRIETÁRIO: Prefeitura Municipal de Macaíba - Secretaria de Infraestrutura		
AUTOR DO PROJETO:	Raphaela Thaís Oliveira Costa	CREA: 2100674013
<p>EMPROTEC PROJETANDO O FUTURO</p> <p>EMPRESA DE PROJETOS TÉCNICOS E CONSTRUÇÃO CIVIL LTDA</p> <p>CNPJ: 16.466.480/0001-10 AVENIDA JOSÉ FERRERA DE MEDEIROS, 158, 3 A.1 SANTA CRUZ/RN - CEP: 55200-000 TEL: (84) 3291.2225/3346.1753 E-MAIL: emprotec@emprotec.com.br</p>		
PREFEITURA MUNICIPAL DE MACAÍBA		
SECRETARIA MUNICIPAL DE INFRAESTRUTURA		5 EST
Setor de Engenharia Rua Dr. Pedro Mota, 310, Centro-Macaíba/RN - CEP: 55280-000		18
Projetos Complementares		DESENHO: Benevides
CONTEÚDO: Pavimento, Sapatas, Pilares, Boxes e Cortes	ÁREA: 364,21 m²	ESCALA: Indicada
		DATA: Jan / 2019